

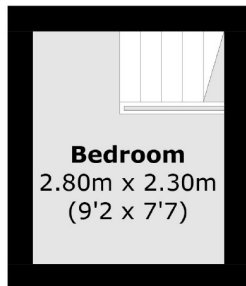


# ALBEMARLE STREET

## MAYFAIR W1S

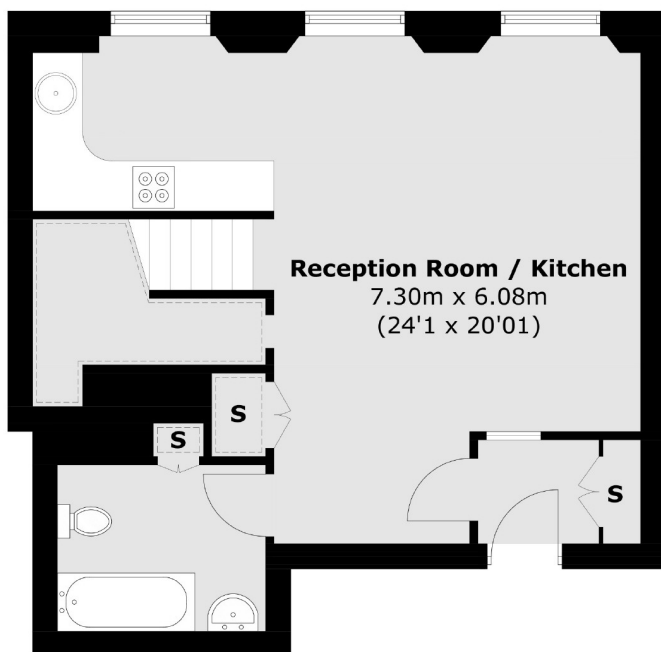


A RECENTLY DECORATED APARTMENT LOCATED IN AN ATTRACTIVE  
GEORGIAN BUILDING WITH MEZZANINE LEVEL WITH DOUBLE BEDROOM.



= Reduced headroom below 1.5m / 5'0

## Upper Mezzanine



## First Floor



Albemarle Street is ideal for Green Park tube station on the Piccadilly, Victoria and Jubilee lines. Piccadilly Circus and the amenities and attractions of the West End are close by.

### FEATURES

- Mezzanine Sleeping Area
- Wooden Flooring
- Modern Fixtures & Fittings
- Lift Access
- Built-In Storage
- Excellent Location

Price: £700 Per week



**WETHERELL**  
MAYFAIR'S FINEST PROPERTIES

102 Mount Street • London • W1K 2TH  
T: 020 7529 5588 E: rentals@wetherell.co.uk  
wetherell.co.uk

We aim to make our particulars both accurate and reliable. However they are not guaranteed; nor do they form part of an offer or contract. If you require clarification on any points then please contact us, especially if you're traveling some distance to view. Please note that appliances and heating systems have not been tested and therefore no warranties can be given as to their working order. Energy Rating: D

NO ONE KNOWS MAYFAIR BETTER THAN WETHERELL