



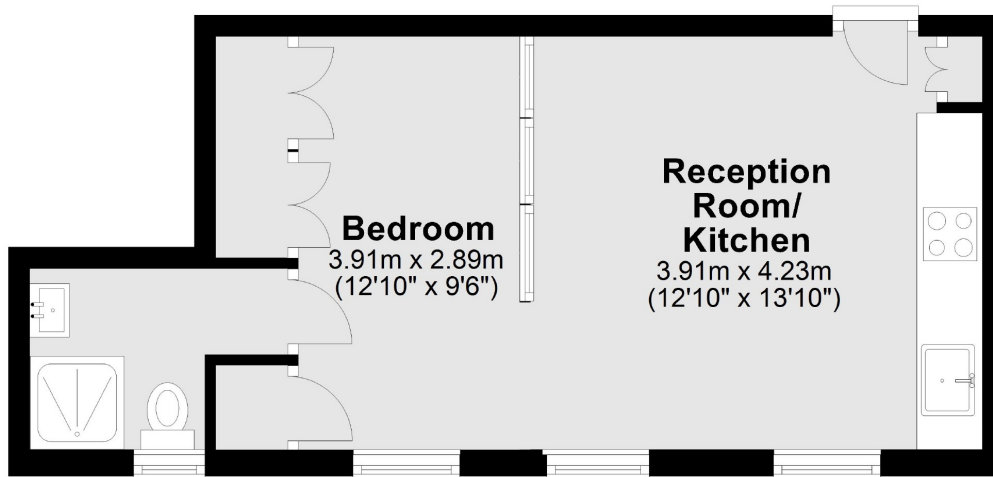
UPPER BROOK STREET

MAYFAIR W1K



A NEWLY REFURBISHED ONE DOUBLE BEDROOM APARTMENT LOCATED ON THE FIFTH FLOOR OF THIS PERIOD BLOCK WITH PORTERAGE AND LIFT.

Fifth Floor



Total area: approx. 31.1 sq. metres (334.4 sq. feet)



The apartment has been finished to the highest of standards throughout with spacious double bedroom, en suite bathroom and substantial built-in storage.

This stylish home has a modern design including underfloor heating and air conditioning throughout.



The building is on the south side of Upper Brook Street between Park Street and Park Lane, close to Hyde Park.

FEATURES

- Spacious Double Bedroom
- Brand New Renovation
- Air Conditioning
- Portered Building
- Fifth Floor
- Lift

Price: £750 Per week

We aim to make our particulars both accurate and reliable. However they are not guaranteed; nor do they form part of an offer or contract. If you require clarification on any points then please contact us, especially if you're traveling some distance to view. Please note that appliances and heating systems have not been tested and therefore no warranties can be given as to their working order. Energy Rating:



WETHERELL
MAYFAIR'S FINEST PROPERTIES

102 Mount Street • London • W1K 2TH
T: 020 7529 5588 E: rentals@wetherell.co.uk

wetherell.co.uk

NO ONE KNOWS MAYFAIR BETTER THAN WETHERELL