

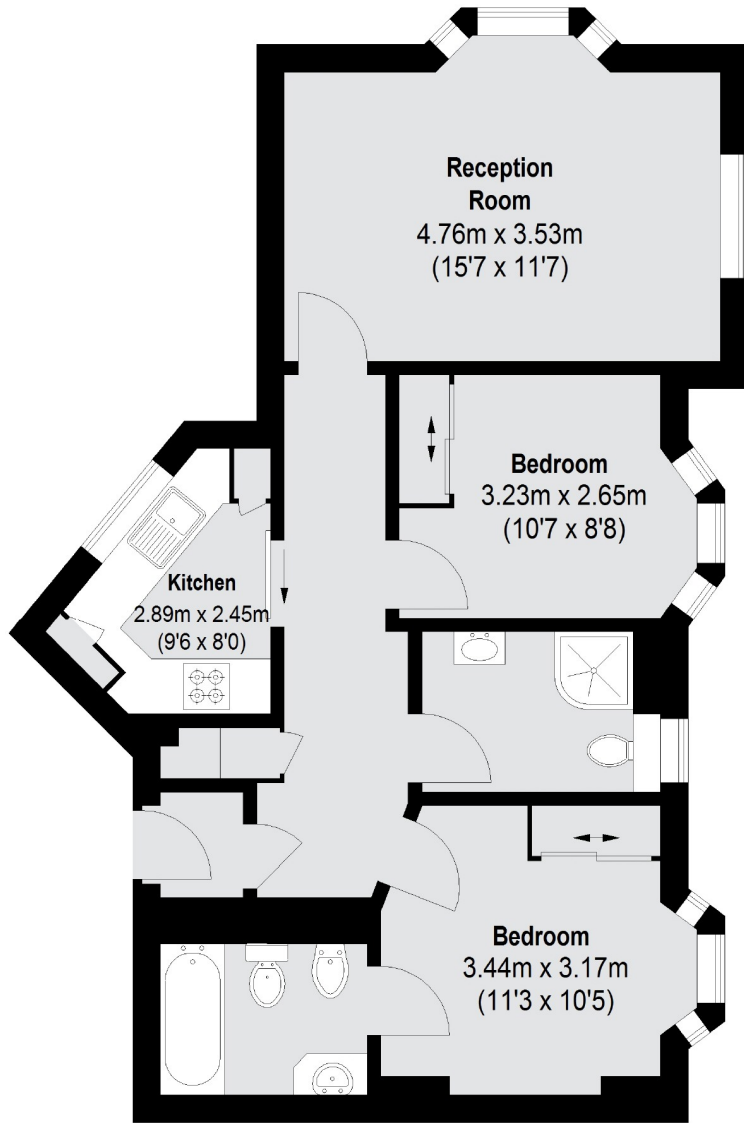


BOURDON STREET

MAYFAIR W1K



THIS WELL PROPORTIONED NEWLY REFURBISHED TWO DOUBLE BEDROOM, TWO BATHROOM APARTMENT IS LOCATED IN A SECURE DEVELOPMENT OFF BERKELEY SQUARE.



Second Floor

Total area (approx.): 60.66 sq. m (653 Sq. ft)

We aim to make our particulars both accurate and reliable. However they are not guaranteed; nor do they form part of an offer or contract. If you require clarification on any points then please contact us, especially if you're traveling some distance to view. Please note that appliances and heating systems have not been tested and therefore no warranties can be given as to their working order. Energy Rating: C



Located off Berkeley Square in the heart of Mayfair, Bloomfield Court is very close to Regent Street, Bond Street and Green Park.

FEATURES

- Two Double Bedrooms
- Two Bathrooms
- Wooden Flooring
- Lift Access
- Modern Kitchen
- Secure Development

Price: £1,750 Per week



WETHERELL
MAYFAIR'S FINEST PROPERTIES

102 Mount Street • London • W1K 2TH
T: 020 7529 5588 E: rentals@wetherell.co.uk

wetherell.co.uk

NO ONE KNOWS MAYFAIR BETTER THAN WETHERELL