



WETHERELL
MAYFAIR'S FINEST PROPERTIES



GREEN STREET, W1K

£1,475 PER WEEK

Bright and spacious four bedroom duplex apartment over the top two floors of this period property ideally located yards from Oxford Street and Hyde Park.

The apartment comprises of four double bedrooms, three bathrooms (one en-suite), study space with fantastic light, excellent storage, large eat-in fully equipped kitchen and a spacious reception room. An ideal let for a corporate couple or a small family.

GREEN STREET IS SITUATED BETWEEN NORTH AUDLEY STREET AND PARK LANE, AND THE PROPERTY IS LOCATED AT THE FAVOURED EASTERN END. IT IS WELL PLACED FOR ACCESS TO THE INTERNATIONALLY RENOWNED SHOPS AND RESTAURANTS OF MAYFAIR.

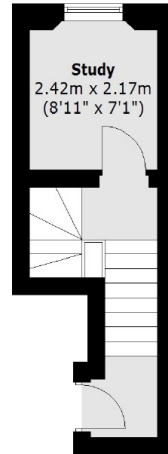


FEATURES

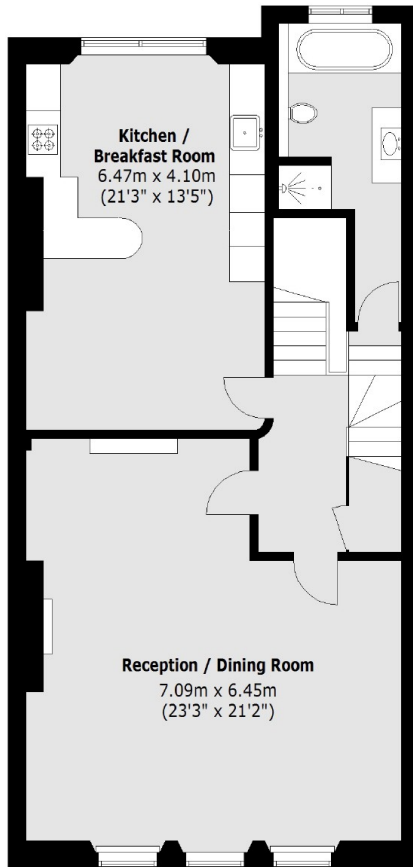
- Four Bedrooms • Three Modern Bathrooms • Separate Study Room • Top Floor Duplex Flat • Built-In Storage • Excellent Location •



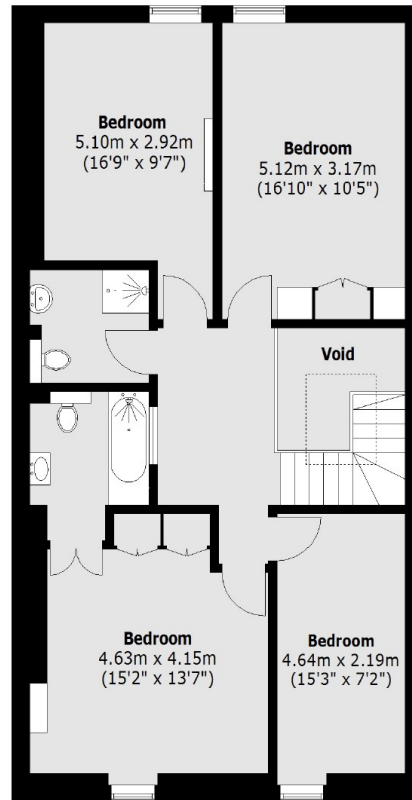
GREEN STREET, LONDON, W1K



Second Floor



Third Floor



Fourth Floor

Total area (approx.): 181.8 sq. m (1956.9 Sq. ft) (Excluding Void)



WETHERELL
MAYFAIR'S FINEST PROPERTIES

102 Mount Street,
London, W1K 2TH
T: 020 7529 5566
E: sales@wetherell.co.uk

We aim to make our particulars both accurate and reliable. However they are not guaranteed; nor do they form part of an offer or contract. If you require clarification on any points then please contact us, especially if you're traveling some distance to view. Please note that appliances and heating systems have not been tested and therefore no warranties can be given as to their working order.

wetherell.co.uk