



**WETHERELL**  
MAYFAIR'S FINEST PROPERTIES



## BOURDON STREET, W1K

£2,150 PER WEEK

A well presented and spacious two double bedroom apartment with a communal roof terrace, lift and porter.

Situated on the fourth floor, this recently renovated apartment offers a generous reception room with dining area and contemporary kitchen. The principal bedroom has an en suite bathroom and walk-in wardrobe, there is a second double bedroom with built-in storage, a separate shower room, lift and porter.

LOCATED OFF BERKELEY SQUARE IN THE HEART OF MAYFAIR, GROSVENOR HILL COURT IS VERY CLOSE TO REGENT STREET, BOND STREET AND GREEN PARK STATIONS.

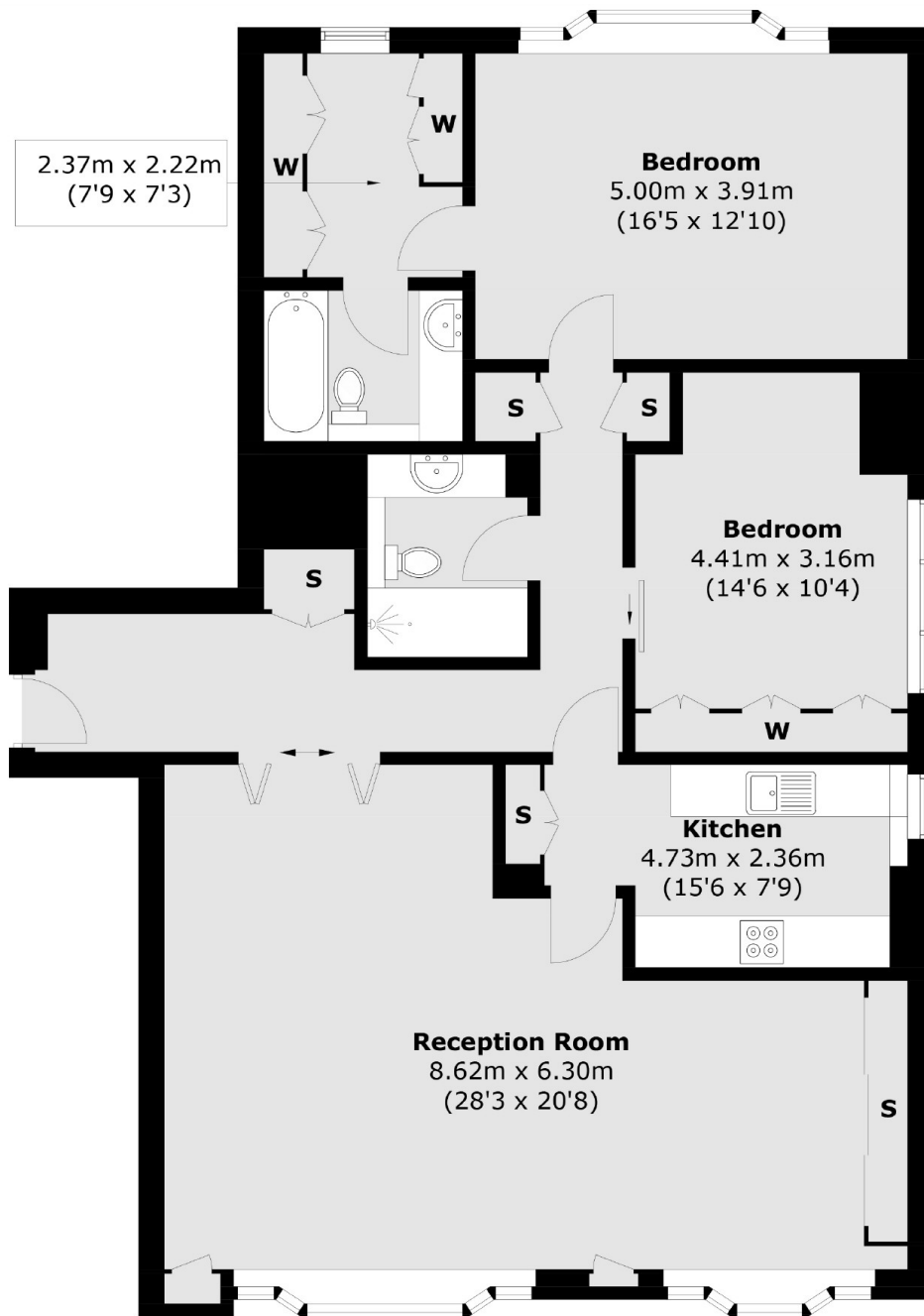


## FEATURES

- Two Double Bedrooms • Two Modern Bathrooms • Roof Garden • Fourth Floor (Lift Access) • Open Plan Reception • Portered Building •



BOURDON STREET,  
LONDON, W1K



**Fourth Floor**

Total area (approx.): 119.4 sq. m (1,285.2 sq. ft)



**WETHERELL**  
MAYFAIR'S FINEST PROPERTIES

102 Mount Street,  
London, W1K 2TH  
T: 020 7529 5566  
E: sales@wetherell.co.uk

We aim to make our particulars both accurate and reliable. However they are not guaranteed; nor do they form part of an offer or contract. If you require clarification on any points then please contact us, especially if you're traveling some distance to view. Please note that appliances and heating systems have not been tested and therefore no warranties can be given as to their working order.

wetherell.co.uk