



**WETHERELL**  
MAYFAIR'S FINEST PROPERTIES



## BRICK STREET, W1J

£4,000,000

Mayfair's only skyscraper - An immaculate three bedroom apartment with rooftop views.

This meticulously renovated apartment is situated on the fourth floor and measures 2011 Sq. Ft. The reception room is 48 feet long with a triple aspect showcasing the impressive views over Mayfair.

The principal bedroom suite has built-in wardrobes with large en suite shower room. There are two further bedrooms, both with built in wardrobes and one with en suite shower room. There is an additional, communal bathroom and a separate kitchen. The building is serviced by two passenger lifts and a 24 hour porter.

The apartment has east, south and west aspects over London taking in Mayfair, The City, The Palace of Westminster and the expanse of Green Park. Hyde Park Corner and Green Park are the nearest underground stations.

---

BRICK STREET IS IDEALLY SITUATED BETWEEN THE VAST EXPANSES OF GREEN PARK AND HYDE PARK, AND MOMENTS FROM MAYFAIR'S FINEST AMENITIES INCLUDING ITS ARRAY OF BOUTIQUE SHOPS AND RESTAURANTS.

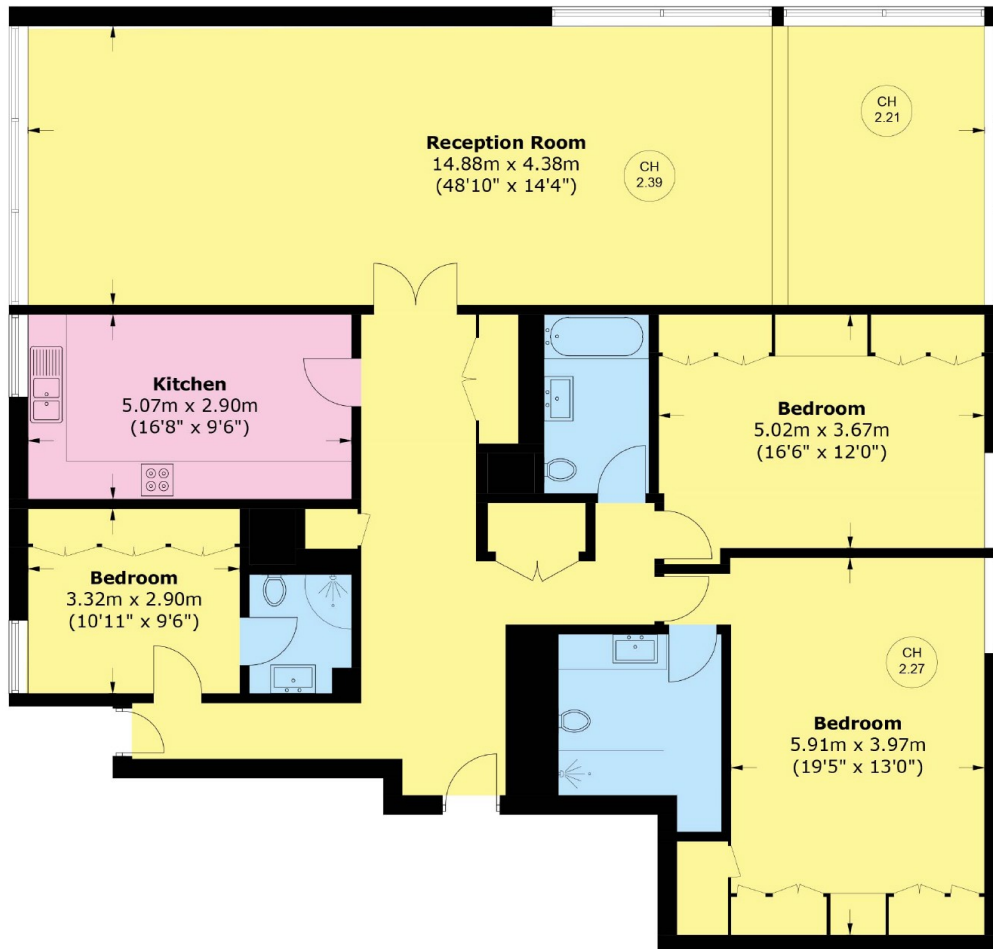


## FEATURES

- Newly Renovated • Three Bedrooms • Three Bathrooms • Lateral • Lift • 24 Hour Porter •



# BRICK STREET, LONDON, W1J



Total area (approx.): 186.9 sq. m (2011.8 sq. ft)



**WETHERELL**  
MAYFAIR'S FINEST PROPERTIES

102 Mount Street,  
London, W1K 2TH  
T: 020 7529 5566  
E: sales@wetherell.co.uk

We aim to make our particulars both accurate and reliable. However they are not guaranteed; nor do they form part of an offer or contract. If you require clarification on any points then please contact us, especially if you're traveling some distance to view. Please note that appliances and heating systems have not been tested and therefore no warranties can be given as to their working order.

wetherell.co.uk