



REEVES MEWS

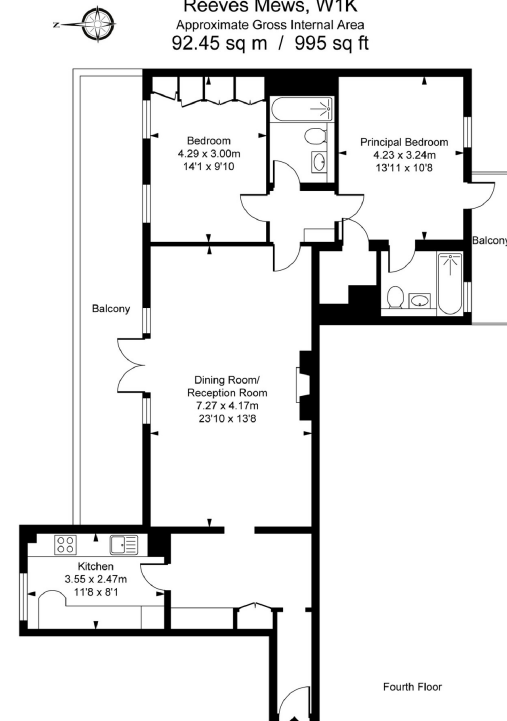
MAYFAIR W1K



A RECENTLY REFURBISHED FOURTH FLOOR TWO BEDROOM APARTMENT IN THIS WELL MAINTAINED BUILDING WITH RESIDENT CARETAKER IN THE HEART OF MAYFAIR.



**Park Mount Lodge,
Reeves Mews, W1K**
Approximate Gross Internal Area
92.45 sq m / 995 sq ft



This plan is not to scale. It is for guidance and not for valuation purposes.
All measurements and areas are approximate only, and have been prepared in accordance with the current edition of theRICS Code of Measuring Practice.
© Fulham Performance

The property consists of principal bedroom with ensuite bathroom, second double bedroom, a further bathroom, a large reception room with dining area and separate kitchen.

The flat has been finished to the highest of standards and it further benefits from a large balcony, accessed from the reception room.

Situated on the top floor (with lift) of a well maintained purpose block, the apartment features quiet south-facing views, creating a bright and airy living space.

FEATURES

- Two Double Bedrooms
- Two Bathrooms
- Two Private Balconies
- Built-In Storage
- Resident Caretaker
- Lift Access

Price: £1,700 Per week

We aim to make our particulars both accurate and reliable. However they are not guaranteed; nor do they form part of an offer or contract. If you require clarification on any points then please contact us, especially if you're traveling some distance to view. Please note that appliances and heating systems have not been tested and therefore no warranties can be given as to their working order. Energy Rating: D

Reeves Mews is located between Park Street and South Audley Street close to the Grosvenor House Hotel and the open spaces of Hyde Park.



WETHERELL
MAYFAIR'S FINEST PROPERTIES

102 Mount Street • London • W1K 2TH
T: 020 7529 5588 E: rentals@wetherell.co.uk

wetherell.co.uk