



**WETHERELL**  
MAYFAIR'S FINEST PROPERTIES



## PARK STREET, W1K

£4,000 PER WEEK

A beautifully presented lateral flat on the fourth floor of this period purpose built block which benefits from a lift and portage.

This apartment benefits from a bright entrance hall, a beautifully decorated reception and dining room. The apartment also features a spacious kitchen and breakfast room, with an open plan family room, four double bedrooms (three en suite bathrooms), further shower room and a cloakroom.

PARK STREET IS IN A PRIME MAYFAIR LOCATION NEAR TO THE SMART RESTAURANTS AND BOUTIQUE SHOPS OF MOUNT STREET. FURTHER LOCAL AMENITIES ARE THE GREEN OPEN SPACES OF HYDE PARK AND GROSVENOR SQUARE.

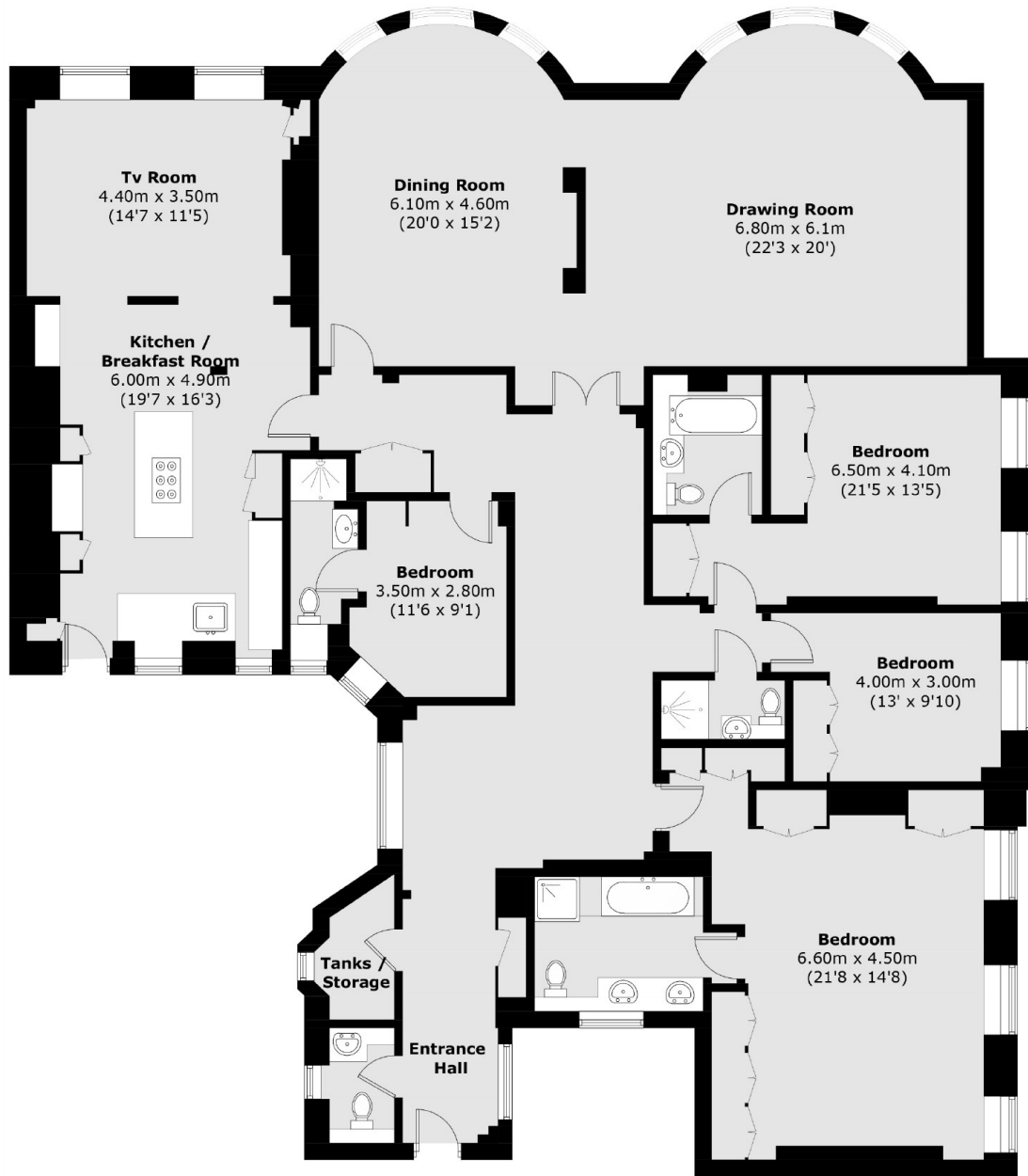


## FEATURES

- Four Double Bedrooms • Four Bathrooms • Lateral • Portered Building • Wooden Flooring • Excellent Location •



# PARK STREET, LONDON, W1K



## Fourth Floor

Total area (approx.): 263.8 sq. m (2839.5 sq. ft)



**WETHERELL**  
MAYFAIR'S FINEST PROPERTIES

102 Mount Street,  
London, W1K 2TH  
T: 020 7529 5566  
E: sales@wetherell.co.uk

We aim to make our particulars both accurate and reliable. However they are not guaranteed; nor do they form part of an offer or contract. If you require clarification on any points then please contact us, especially if you're traveling some distance to view. Please note that appliances and heating systems have not been tested and therefore no warranties can be given as to their working order.

wetherell.co.uk