



**WETHERELL**  
MAYFAIR'S FINEST PROPERTIES



## MAYFAIR ROW, W1J

**£5,000 PER WEEK**

A newly renovated four bedroom villa of 2,413 sq ft. Meticulously designed to a high standard with accommodation split across four floors.

The property has a fabulous open plan kitchen and reception room and two further reception rooms on the lower ground and first floor, fantastic for entertaining or being used as informal family areas.

Two generous bedroom suites occupy the lower ground floor, with the main suite and a further guest bedroom on the second. A superb roof terrace can be reached through a retracting skylight door, perfect for the summer months.

SHEPHERD MARKET WAS THE SITE OF THE ORIGINAL 'MAY FAIR' FROM WHICH THE NEIGHBOURHOOD GETS ITS NAME. THIS PRIVATE AND PEACEFUL MEWS ADDRESS IS CONVENIENT FOR SOME OF LONDON'S FINEST RESTAURANTS AND LUXURY BOUTIQUES.



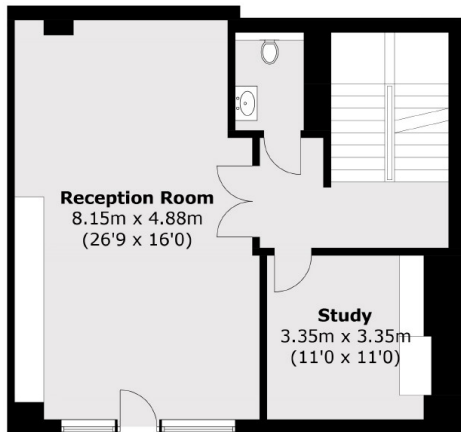
## FEATURES

- Open Plan Kitchen • Double Reception • Four Double Bedrooms • Three En Suites • Roof Terrace • Secure Double Garage •





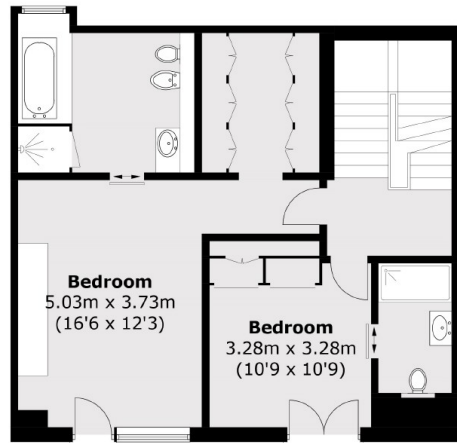
# MAYFAIR ROW, LONDON, W1J



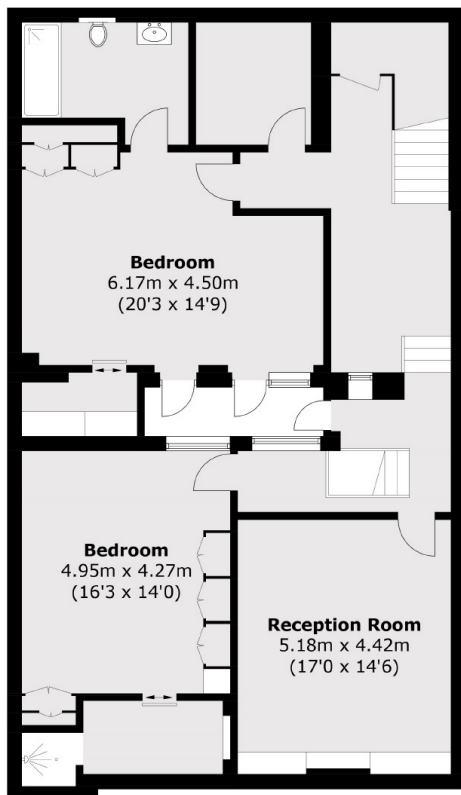
**First Floor**



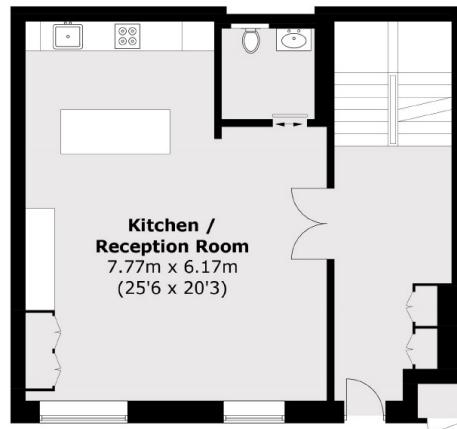
**Roof Terrace**



**Second Floor**



**Lower Ground Floor**



**Ground Floor**

Total area (approx.): 343.4 sq. m (3,696.3 sq. ft)  
Roof Terrace / External Area: 47.8 sq. m (514.5 sq. ft)



**WETHERELL**  
MAYFAIR'S FINEST PROPERTIES

102 Mount Street,  
London, W1K 2TH  
T: 020 7529 5566  
E: sales@wetherell.co.uk

We aim to make our particulars both accurate and reliable. However they are not guaranteed; nor do they form part of an offer or contract. If you require clarification on any points then please contact us, especially if you're traveling some distance to view. Please note that appliances and heating systems have not been tested and therefore no warranties can be given as to their working order.

wetherell.co.uk