



WETHERELL
MAYFAIR'S FINEST PROPERTIES



PARK STREET, W1K

£2,750 PER WEEK

A four double bedroom townhouse in the heart of Mayfair which has been beautifully refurbished to an exceptionally high standard.

The house is enviably located moments from Hyde Park and boasts luxurious accommodation whilst retaining period features including feature fireplaces, high ceilings and floor to ceiling windows whilst air conditioning has been installed throughout.

Accommodation consists of a reception room, dining room, kitchen, four bedrooms, study and four bathrooms.

THE HOUSE IS CONVENIENTLY LOCATED CLOSE TO OXFORD STREET, HYDE PARK, MARBLE ARCH AND BOND STREET TUBE STATIONS.

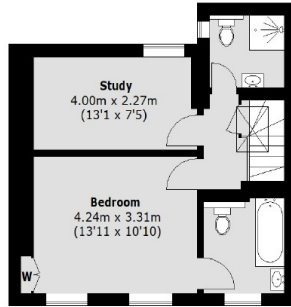


FEATURES

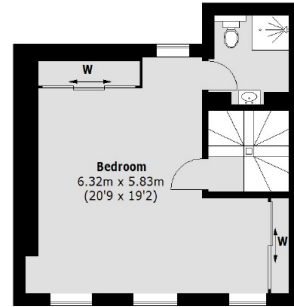
- Four Double Bedrooms • Four Bathrooms • Air Conditioning • Balcony • Two Reception Rooms • Wooden Flooring •



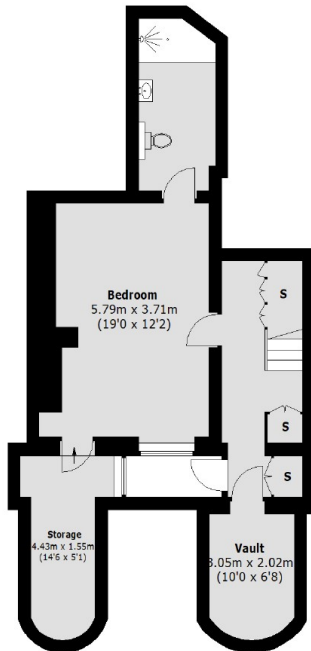
PARK STREET, LONDON, W1K



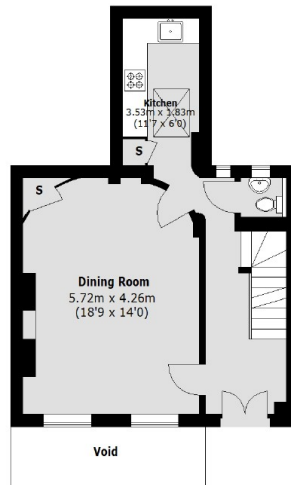
Third Floor



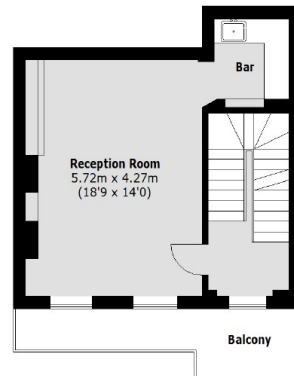
Second Floor



Basement



Ground Floor



First Floor

Total area (approx.): 219.1 sq. m (2359 sq. ft)
(Including Vault / Excluding Void)
Balcony: 8.60 sq. m (93 sq. ft)



WETHERELL
MAYFAIR'S FINEST PROPERTIES

102 Mount Street,
London, W1K 2TH
T: 020 7529 5566
E: sales@wetherell.co.uk

We aim to make our particulars both accurate and reliable. However they are not guaranteed; nor do they form part of an offer or contract. If you require clarification on any points then please contact us, especially if you're traveling some distance to view. Please note that appliances and heating systems have not been tested and therefore no warranties can be given as to their working order.

wetherell.co.uk