

BURLINGTON GATE

25 CORK STREET, W1

ERY

25

25

ACTIVATE

THE BURLINGTON GATE DEVELOPMENT
A NEW RESIDENTIAL AND COMMERCIAL DEVELOPMENT
IN THE HEART OF LONDON'S WEST END

AN IMMACULATE
ONE BEDROOM
APARTMENT
OFFERING THE
HEIGHT OF
CONTEMPORARY
AND LUXURY
LIVING IN
MAYFAIR'S
ART HUB.



This apartment of 705 sq ft is situated on the first floor of Burlington Gate, an iconic building designed by Rogers Stirk Harbour + Partners and developed by Native Land. The apartment has a large open plan reception room with an modern kitchen and integrated Miele appliances, ample storage and floor to ceiling windows overlooking Cork Street. The double bedroom has a dressing area and an exceptional bathroom with a walk-in shower, double basin vanity sinks and separate bath. There is lift access and comfort cooling.

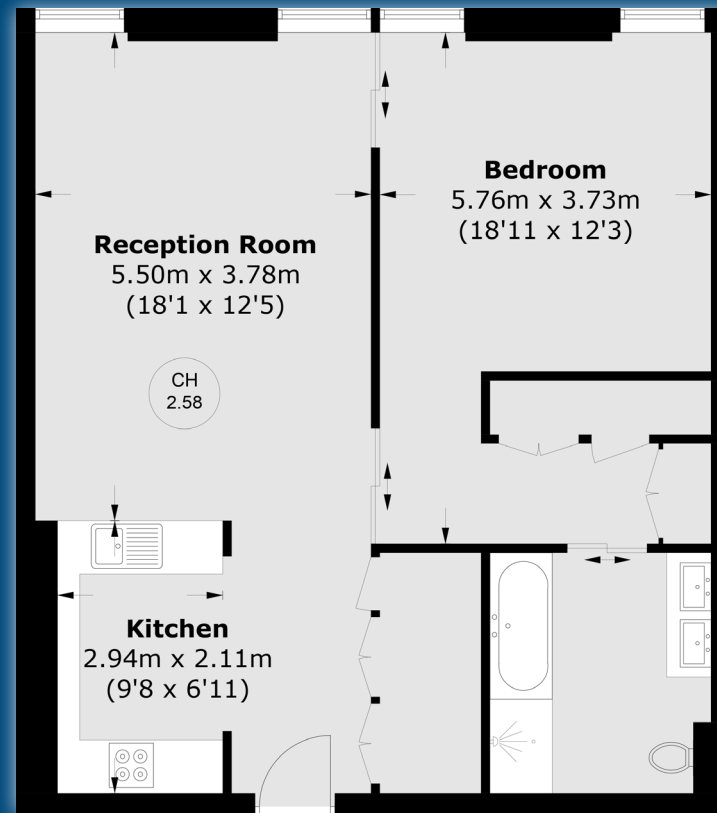
Burlington Gate benefits from a 24-hour uniformed concierge, secure underground parking, and a resident only gym, sauna, and spa-managed by Bodyism.

Located just off Savile Row in the heart of Mayfair's art and tailoring district, Burlington Gate is only moments away from the iconic Burlington Arcade and Luxury shops of New Bond Street.

- | One Bedroom
- | First Floor
- | 705 sq. ft
- | 24-hour Uniformed Concierge
- | Lift
- | 995 Year Lease
- | Secure parking
- | Gym



TOTAL AREA (APPROX.)
65.5 SQ. M (705.1 SQ. FT)



Sole Agent



WETHERELL
MAYFAIR'S FINEST PROPERTIES

102 Mount Street, London, W1K 2TH
020 7529 5566 • wetherell.co.uk

FIRST FLOOR

Terms:

Tenure - 995-year lease

Service charge - £12,970

Price - £2,250,000

Wetherell have no authority to make or give any representations or warranties in relation to the property. These particulars do not form part of any offer or contract and must not be relied upon as statements or representations of fact. Any areas, measurements or distances are approximate. The text, photographs and plans are for guidance only and are not necessarily comprehensive. It should not be assumed that the property has all the necessary planning, building regulation or other consents and Wetherell have not tested any services, equipment or facilities. Purchasers must satisfy themselves by inspection or otherwise. Energy Efficiency Rating: Band B. May 2024.