



WETHERELL
MAYFAIR'S FINEST PROPERTIES



GREEN STREET, W1K

£2,650,000

An immaculate two-bedroom apartment in a corner position with views of Hyde Park.

This spacious duplex apartment is set over the entire 4th and 5th floors, with lift, of this purpose-built block in Mayfair. The fourth floor has a bright, open plan, L shaped reception room and kitchen/dining room with herringbone flooring throughout. The corner aspect and 8 windows allow an abundance of natural light whilst enjoying a west facing aspect including direct views of Hyde Park. There is a guest WC and integrated storage.

The fifth floor comprises two double bedrooms and two bathrooms. The principal suite is a large, 20-foot-wide room with built in storage and a modern en suite shower room. The second double bedroom also benefits from built in storage. There is also a substantial, separate family bathroom.

GREEN STREET IS SITUATED BETWEEN NORTH AUDLEY STREET AND PARK LANE. IT IS WELL PLACED FOR ACCESS TO THE INTERNATIONALLY RENOWNED SHOPS, RESTAURANTS AND OTHER AMENITIES OF MAYFAIR AND THE WEST END.



FEATURES

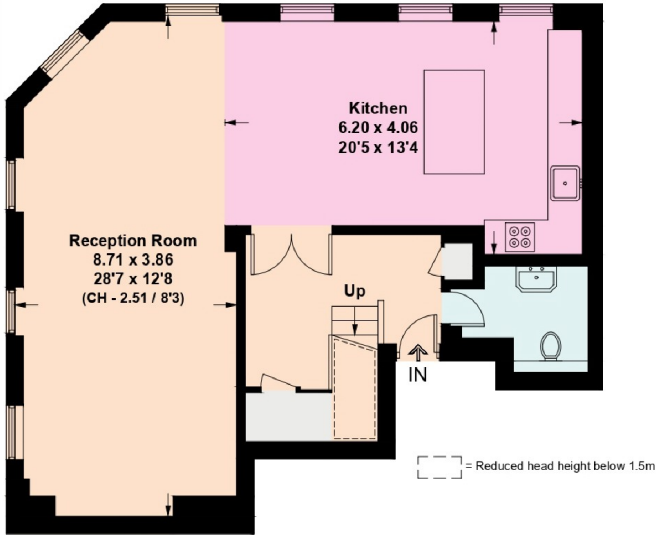
- Two Bedrooms • Two Bathrooms • Duplex • Lift • Views of Hyde park • Corner Position •



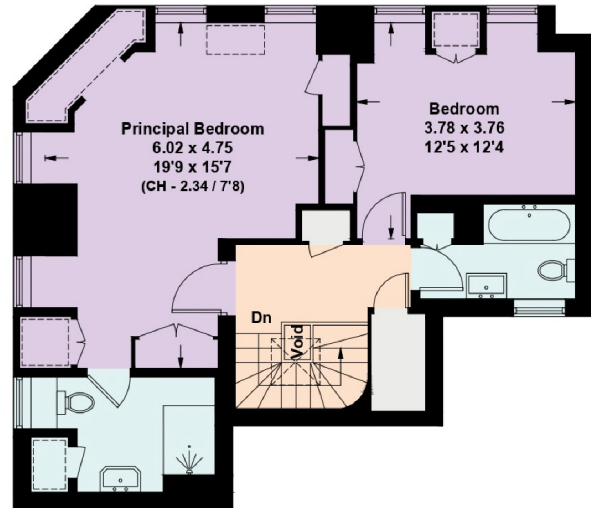
GREEN STREET, LONDON, W1K

Dunraven House, W1K

Approximate Floor Area = 131.6 sq m / 1416 sq ft sq ft
Including Limited Use Area (6.5 sq m / 70 sq ft) & Excluding Void



Fourth Floor



Fifth Floor

This plan is for layout guidance only. Not drawn to scale unless stated. Windows and door openings are approximate. Whilst every care is taken in the preparation of this plan, please check all dimensions, shapes and compass bearings before making any decisions reliant upon them. (ID1078075)



WETHERELL
MAYFAIR'S FINEST PROPERTIES

102 Mount Street,
London, W1K 2TH
T: 020 7529 5566
E: sales@wetherell.co.uk

We aim to make our particulars both accurate and reliable. However they are not guaranteed; nor do they form part of an offer or contract. If you require clarification on any points then please contact us, especially if you're traveling some distance to view. Please note that appliances and heating systems have not been tested and therefore no warranties can be given as to their working order.

wetherell.co.uk