

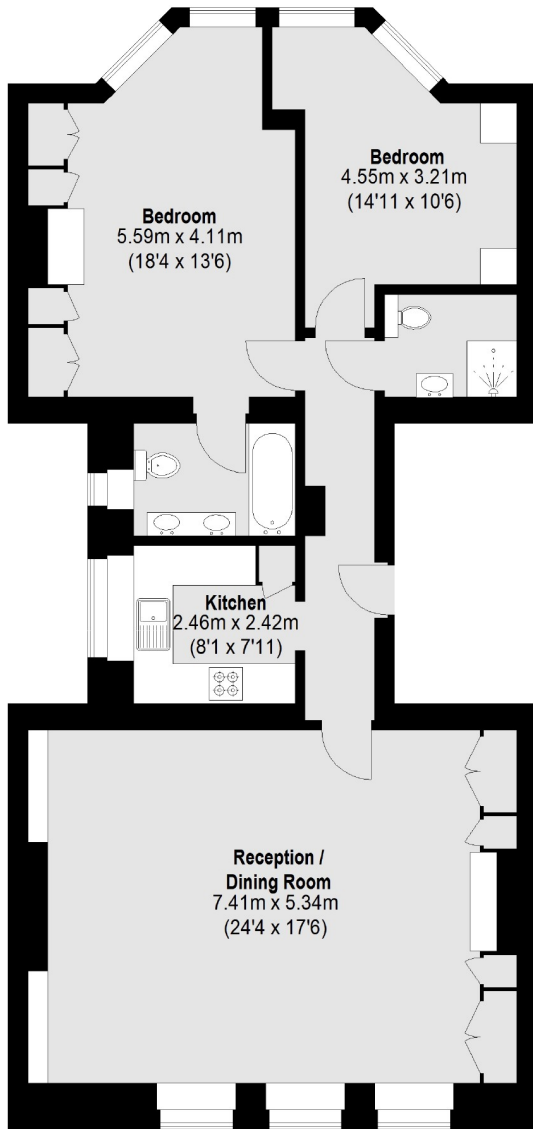


BALFOUR PLACE

MAYFAIR W1K



AN ELEGANT TWO DOUBLE BEDROOM FIRST FLOOR APARTMENT (WITH LIFT), IN THE HEART OF PRIME MAYFAIR WITH GOOD NATURAL LIGHT THROUGHOUT.



First Floor

Total area (approx.): 103.32 sq. m (1112 Sq. ft)

We aim to make our particulars both accurate and reliable. However they are not guaranteed; nor do they form part of an offer or contract. If you require clarification on any points then please contact us, especially if you're traveling some distance to view. Please note that appliances and heating systems have not been tested and therefore no warranties can be given as to their working order. Energy Rating: D



Balfour Place is in the heart of Mayfair Village with easy access to the local restaurants, shops and cafés of Mount Street as well as the open spaces of Hyde Park.

FEATURES

- Two Double Bedrooms
- Two Bathrooms
- Excellent Location
- Lift Access
- Modern Kitchen
- Day Porter

Price: £1,595 Per week



WETHERELL

MAYFAIR'S FINEST PROPERTIES

102 Mount Street • London • W1K 2TH
T: 020 7529 5588 E: rentals@wetherell.co.uk

wetherell.co.uk

NO ONE KNOWS MAYFAIR BETTER THAN WETHERELL