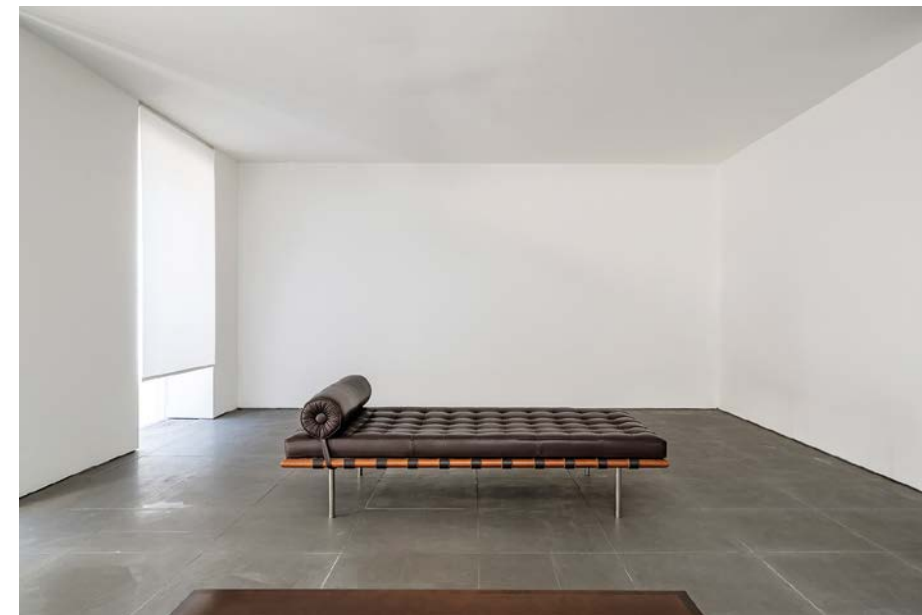


UPON INSTRUCTIONS OF THE ESTATE OF
RALPH I GOLDBERG



HAY'S MEWS MAYFAIR LONDON W1



“THE ESSENCE OF MINIMALISM IS
THE REDUCTION OF ADORNMENT”

JOHN PAWSON

Located off Berkeley Square in the heart of Mayfair.
A rare Pawson designed private home of 2,845 sq.ft.
Garage, patio and roof terrace.

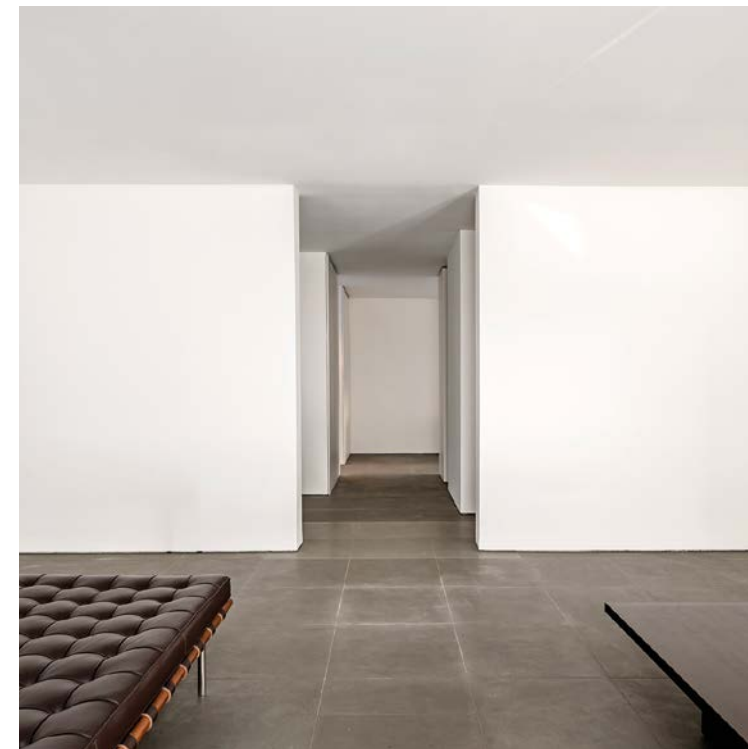
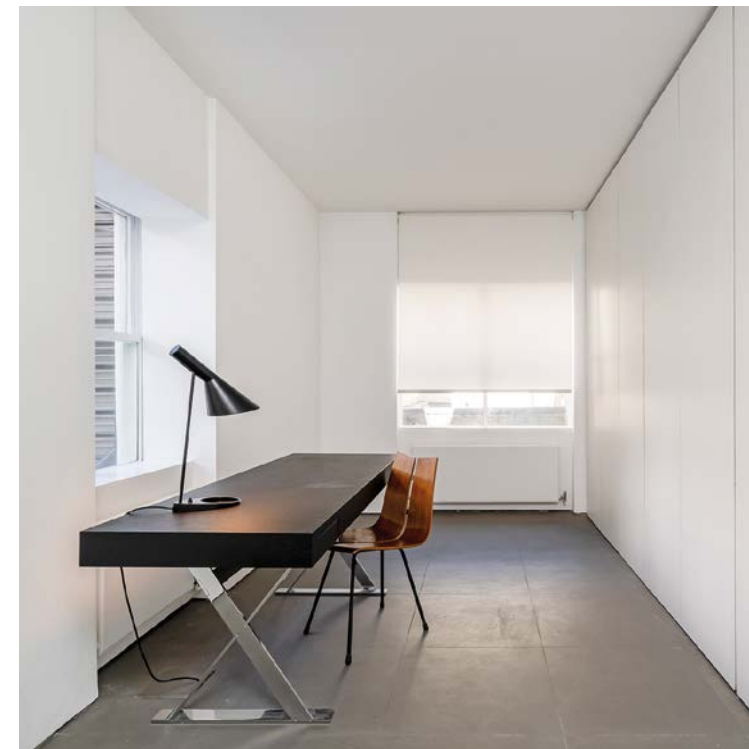
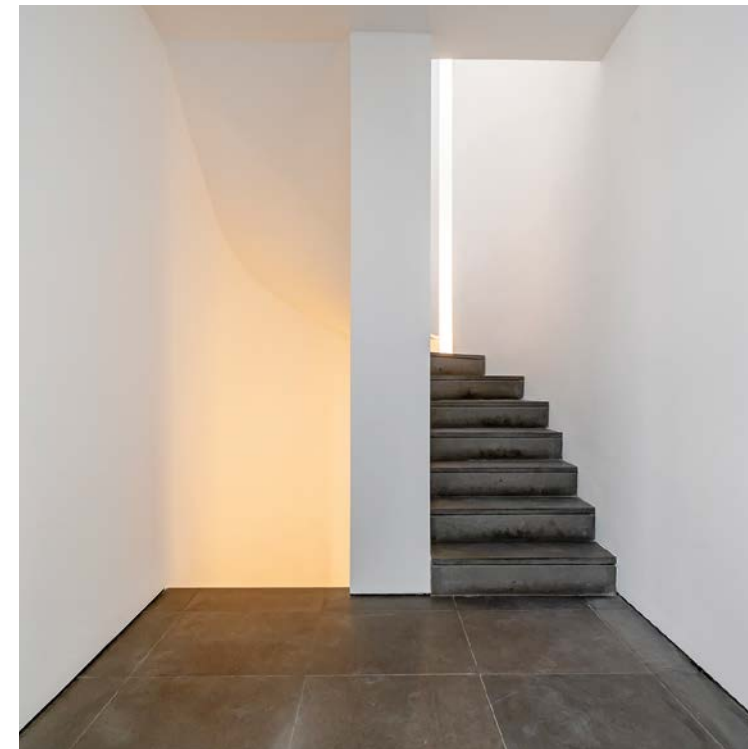
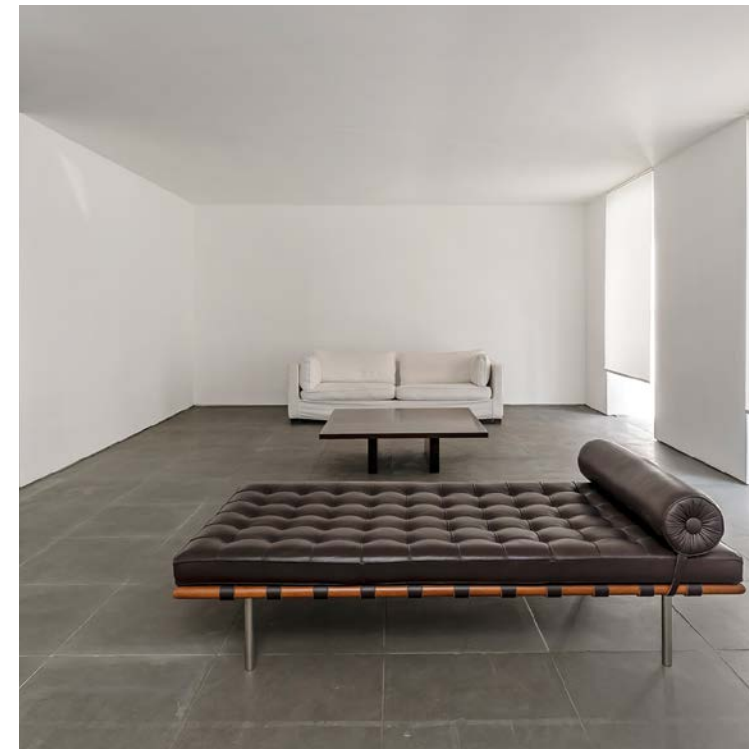


JOHN PAWSON CBE, RDI
(born 1949) is a British autodidact architect whose work is known for its minimalist aesthetic.

PRESENT SPACE: How would you define the home?
JOHN PAWSON: Le Corbusier said that

“THE HOME SHOULD BE THE TREASURE CHEST OF LIVING.”

In the end, home is defined by people—by family and friends—and not by arrangements of stone, bricks and glass. At the same time, the feeling of being “at home” is very much influenced by the nature and detail of architecture. For me, a sense of ease and stillness is essential to feeling at home in a place. When you walk into a space where all of the conditions are right, the sense of quiet exhilaration is immediate and immense—for some people the reaction is a literal exhalation, accompanied by a lowering of the shoulders, as tension is released.





Q: Talk to me about lines.

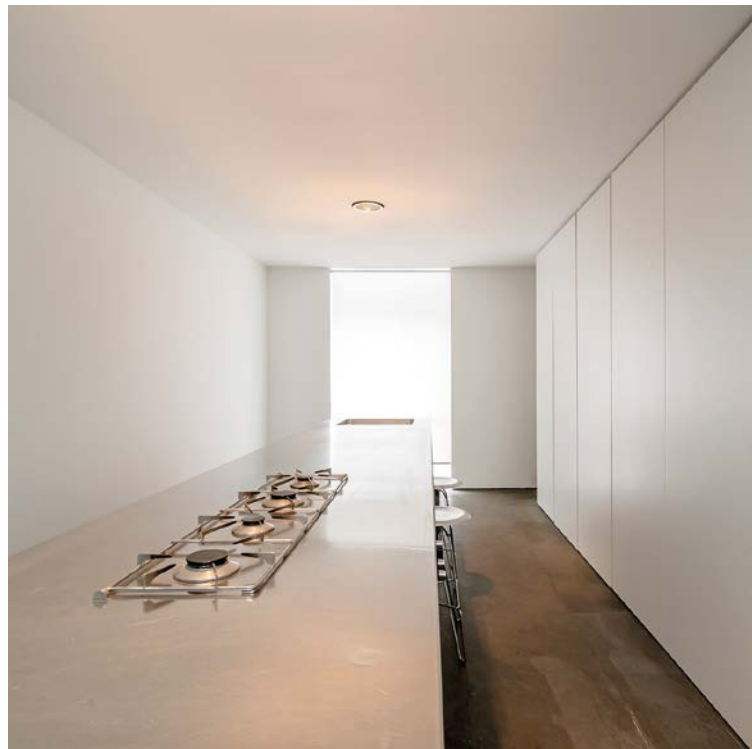
JOHN PAWSON:

Yes, Lines. Lots of them. Straight lines.

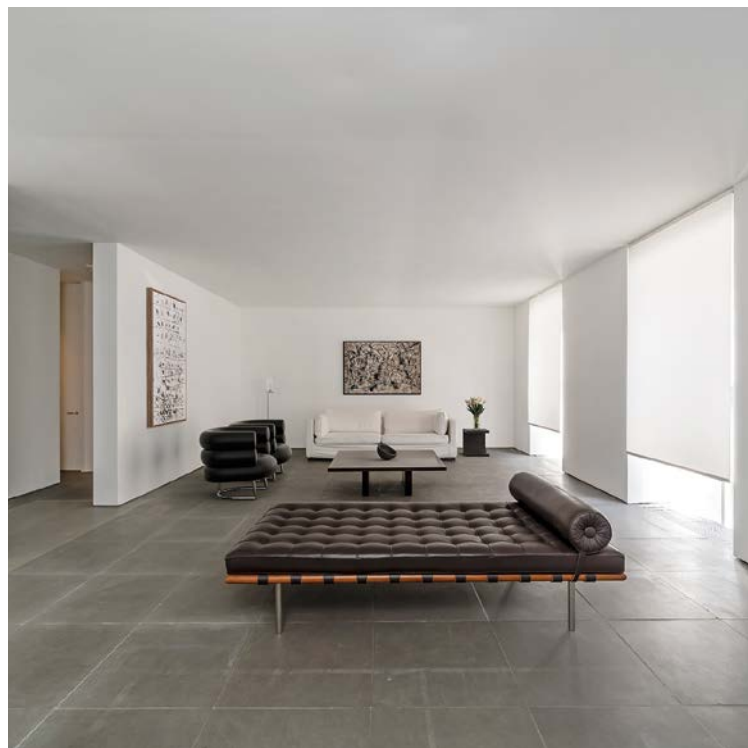
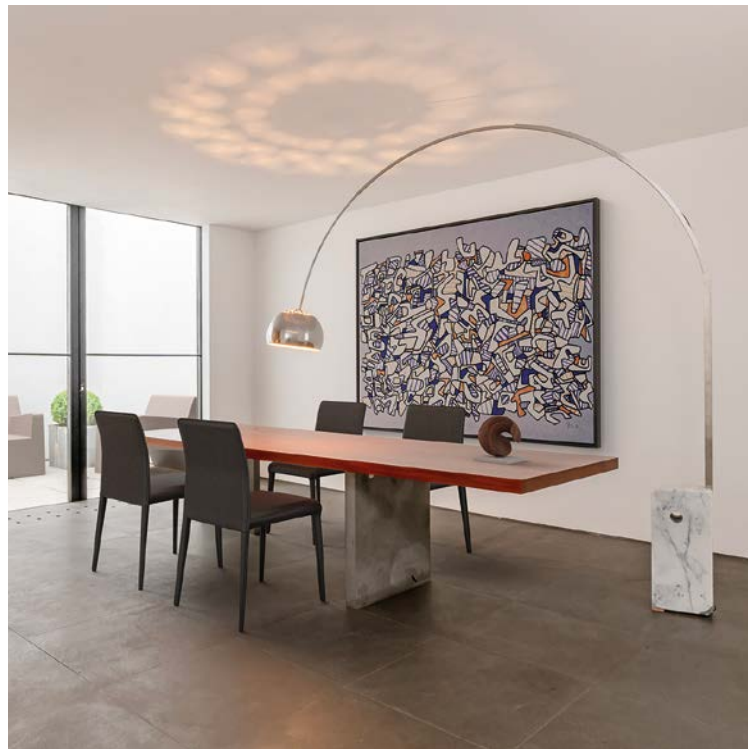
Q: Are they always straight?

JOHN PAWSON:

Human beings and women in particular have curves. Buildings are, for the most part, rectilinear. Things are only curved when they need to be.







The images on the left are real photographs, which have been virtually staged by multi-award winning design house Casa e Progetti, to include the following furniture and furnishings:

GROUND FLOOR DINING ROOM

Bonaldo - Deli Dining Chairs
 Vondom Jut Armchair - Outdoors
 Jean Dubuffet - Art

RECEPTION ROOM

Knoll - Barcelona Daybed
 Pierre Jeanneret Stool
 Maxalto by Bibendum - Eileen Armchair
 Jackson Pollock - Number 28 1950 - Art

TERRACE

Vondom - Jut Dining Set



Doris Lockhart Saatchi by Robert Mapplethorpe (1946–1989)

EXTRACT FROM AN ARTICLE BY VICKI COUCHMAN

Sunday April 9th 2017. The Sunday Times

In 1987, she hired the godfather of minimalism, John Pawson, to completely reconfigure a house on Hay's Mews, in Mayfair, just behind Berkeley Square. "Charles was far less keen on minimalism than I was, but I didn't care. He wasn't going to live in it..."

...She acknowledges Pawson's influence in everything she's done since. "And he says I'm the client who lives best in his spaces. He gets upset when people mess up his designs with personal clutter."

Robert Mapplethorpe's iconic portrait of her is now in the National Portrait Gallery's permanent collection.

"Robert took the picture in 1983. I sat next to him at dinner and said, 'Let's do a number!' He totally objectified me, dehumanised me, almost. When I look at it, I don't see myself, I see Robert Mapplethorpe's wonderful photograph."



RALPH I GOLDENBERG (1935-2022)

A lifelong patron of the arts and a prominent Chicago art collector with a passion for contemporary art, which he started collecting in the 1960s. Over the years, his collection held some of the giants of contemporary art, including Willem DeKooning, Mark Rothko, Cy Twombly and Jackson Pollock.

He was actively involved with the Art Institute of Chicago, as well as the Museum of Contemporary Art. After he moved to London, he supported the Tate Modern and the Museum of Modern Art in New York, where he served on the Committee for Drawings and Prints.

LEASE: 973 YEARS
 PRICE: £6,750,000
 SOLE AGENT: WETHERELL

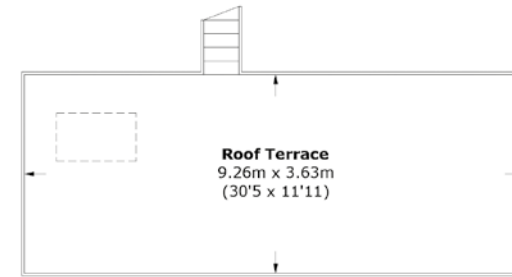
Wetherell have no authority to make or give any representations or warranties in relation to the property. These particulars do not form part of any offer or contract and must not be relied upon as statements or representations of fact. Any areas, measurements or distances are approximate. The text, photographs and plans are for guidance only and are not necessarily comprehensive. It should not be assumed that the property has all the necessary planning, building regulation or other consents and Wetherell have not tested any services, equipment or facilities. Purchasers must satisfy themselves by inspection or otherwise.
 John Pawson Photograph © Alamy Stock Photo. May 2024.

Brochure by TwentyOneFifty Tel 020 8778 2150. Photography by Salmaan Mazir.

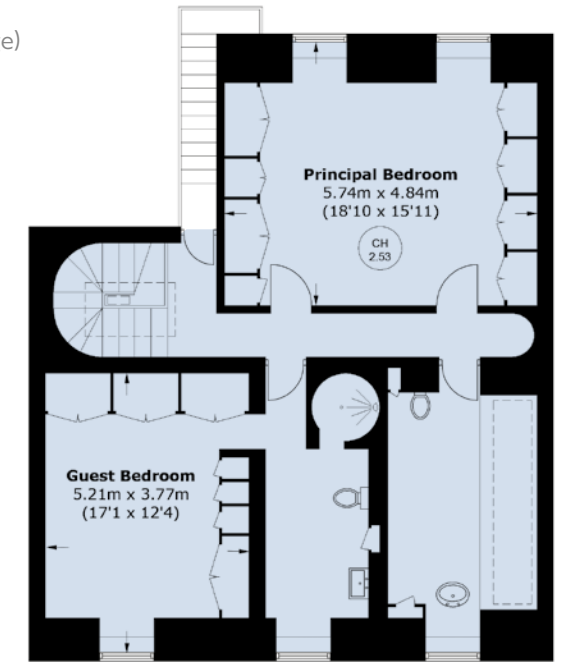


AREA (APPROX.): 264.3 SQ. M (2,845.0 SQ. FT) (Including Garage)

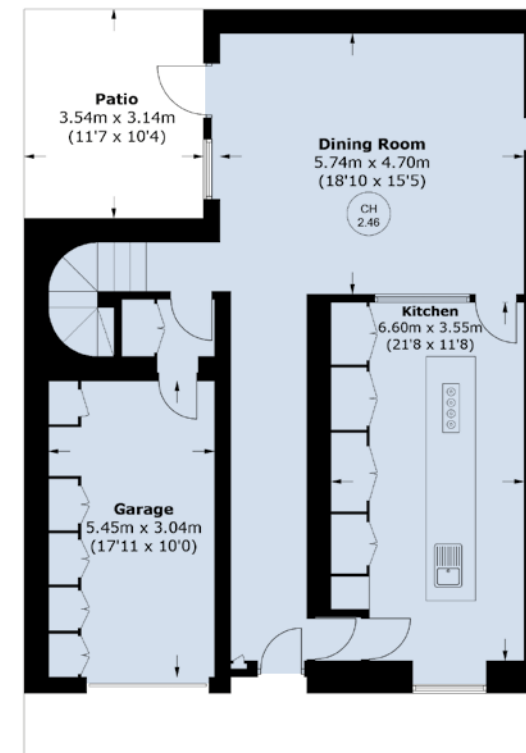
Roof Terrace: 34.5 sq. m (371.3 sq. ft)



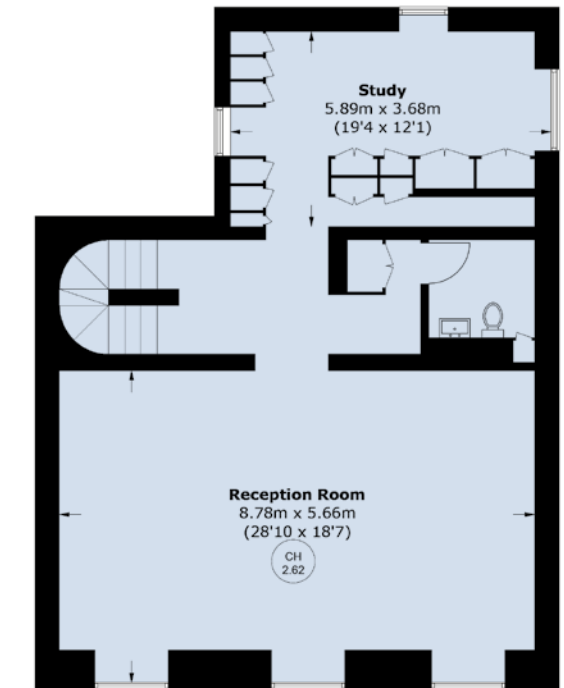
ROOF TERRACE



SECOND FLOOR



GROUND FLOOR



FIRST FLOOR

A PAEAN TO MINIMALISM

The collection that Ralph I. Goldenberg assembled in Hay's Mews attests to his exquisite taste and his unique ability to forge new dialogues between art and architecture.

The interior of the home is, as may be expected by those familiar with Pawson's aesthetic, defined by its pared-back elegance. It has the air and the calibre of an exquisite art gallery.

Auction House note by Sotheby's



WETHERELL

MAYFAIR'S FINEST PROPERTIES

102 Mount Street, London W1K 2TH

Tel: 020 7529 5566

wetherell.co.uk