

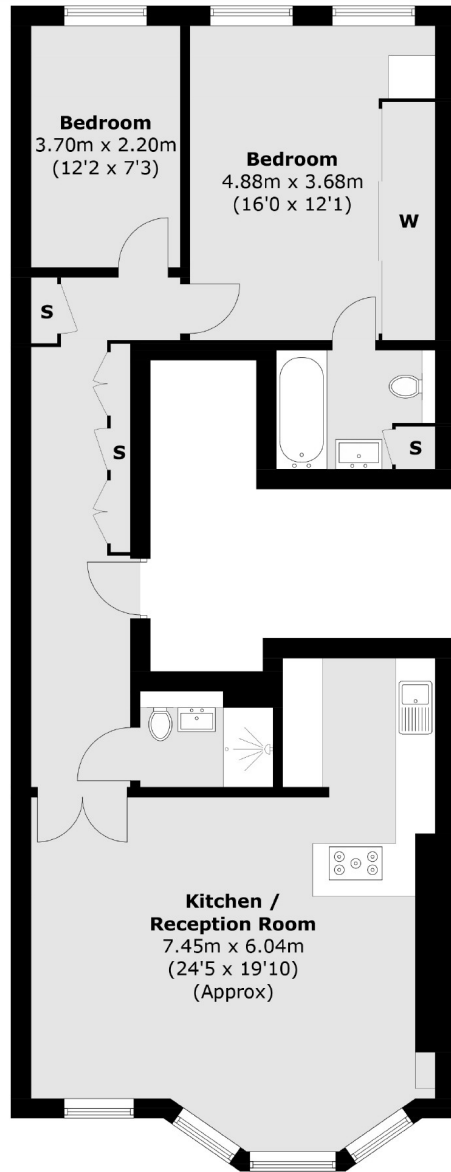


PARK STREET

MAYFAIR W1K



A NEWLY RENOVATED TWO BEDROOM APARTMENT ON THE SECOND FLOOR OF A RED BRICK, PERIOD CONVERSION IN A HIGHLY SOUGHT AFTER MAYFAIR LOCATION.



Second Floor

Total area (approx.): 82.4 sq. m (886.9 sq. ft)



The apartment has been newly renovated throughout, offering two double bedrooms with two modern bathrooms.

The open plan kitchen/living area offers a breakfast bar as well as dining and entertaining space.

The apartment has been furnished to an exceptional standard as well as boasting high ceilings, wooden flooring, air conditioning, Banham security and home automation system.

FEATURES

- Two Double Bedrooms
- Two Modern Bathrooms
- Brand New Renovation
- Furnished
- CCTV and Secure Entry Systems
- Wooden Flooring

Price: £1,425 Per week

We aim to make our particulars both accurate and reliable. However they are not guaranteed; nor do they form part of an offer or contract. If you require clarification on any points then please contact us, especially if you're traveling some distance to view. Please note that appliances and heating systems have not been tested and therefore no warranties can be given as to their working order. Energy Rating: C



Set close to Oxford Street and Marble Arch station, this property is conveniently located within easy reach of the shops and restaurants of Mayfair.



WETHERELL
MAYFAIR'S FINEST PROPERTIES

102 Mount Street • London • W1K 2TH
T: 020 7529 5588 E: rentals@wetherell.co.uk

wetherell.co.uk