



# WETHERELL

MAYFAIR'S FINEST PROPERTIES



## SOUTH AUDLEY STREET, W1K

£1,350,000

A charming one bedroom apartment of 429 square feet, set within a period building located in the heart of the Mayfair Village.

Situated on the third floor (with lift), this wonderfully bright apartment is the ideal Pied à Terre in the heart of Mayfair. The large open plan reception room has french windows leading onto a charming balcony with views towards the Grosvenor Chapel and along South Audley Street. The double bedroom has ample storage and there is a separate bathroom.

SOUTH AUDLEY STREET RUNS BETWEEN GROSVENOR SQUARE AND CURZON STREET, PERFECTLY LOCATED TO THE VARIOUS BOUTIQUES, RESTAURANTS, AND HOTELS OF CENTRAL MAYFAIR, INCLUDING THE WORLD-RENOWNED HARRY'S BAR.



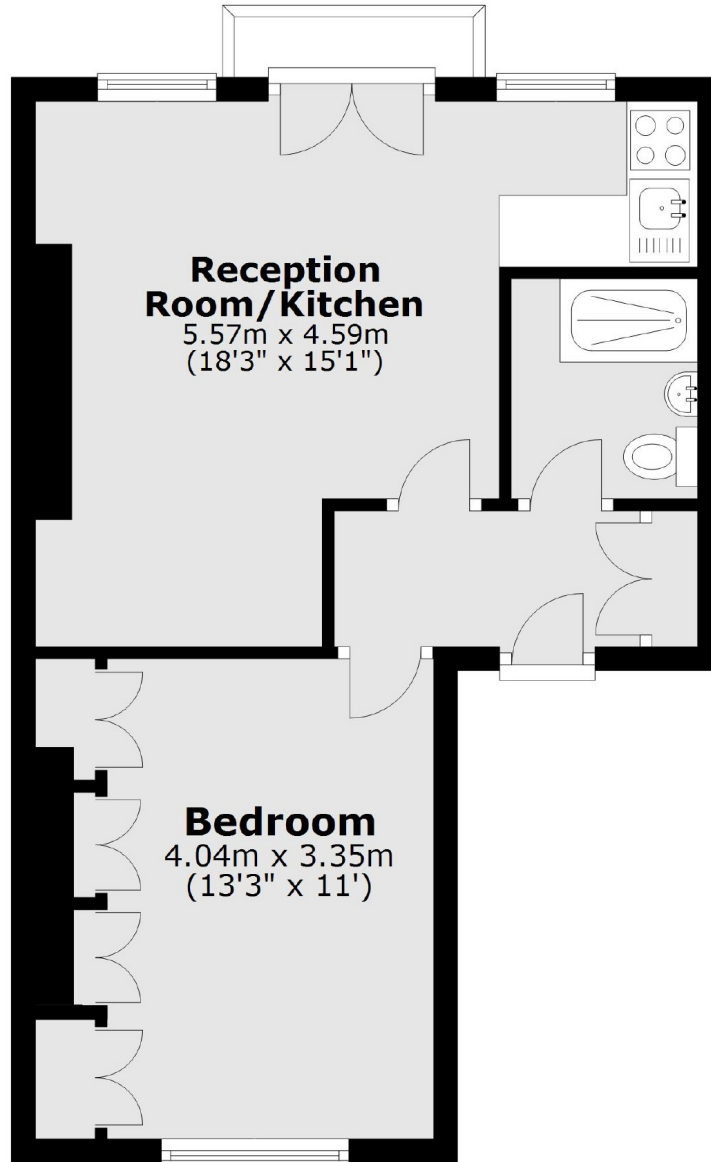
## FEATURES

- Mayfair Village • One Bedroom • One Bathroom • Long Lease • Balcony • Lift •



SOUTH AUDLEY STREET,  
LONDON, W1K

### Third Floor



Total area: approx. 39.4 sq. metres (424.5 sq. feet)



**WETHERELL**  
MAYFAIR'S FINEST PROPERTIES

102 Mount Street,  
London, W1K 2TH  
T: 020 7529 5566  
E: sales@wetherell.co.uk

We aim to make our particulars both accurate and reliable. However they are not guaranteed; nor do they form part of an offer or contract. If you require clarification on any points then please contact us, especially if you're traveling some distance to view. Please note that appliances and heating systems have not been tested and therefore no warranties can be given as to their working order.

wetherell.co.uk