



# WETHERELL

MAYFAIR'S FINEST PROPERTIES



## SOUTH AUDLEY STREET, W1K

£1,450,000

A charming one bedroom apartment of 429 square feet, set within a period building located in the heart of the Mayfair Village.

Situated on the third floor (with lift), this wonderfully bright apartment is the ideal Pied à Terre in the heart of Mayfair. The large open plan reception room has french windows leading onto a charming balcony with views towards the Grosvenor Chapel and along South Audley Street. The double bedroom has ample storage and there is a separate bathroom.

SOUTH AUDLEY STREET RUNS BETWEEN GROSVENOR SQUARE AND CURZON STREET, PERFECTLY LOCATED TO THE VARIOUS BOUTIQUES, RESTAURANTS, AND HOTELS OF CENTRAL MAYFAIR, INCLUDING THE WORLD-RENOWNED HARRY'S BAR.



## FEATURES

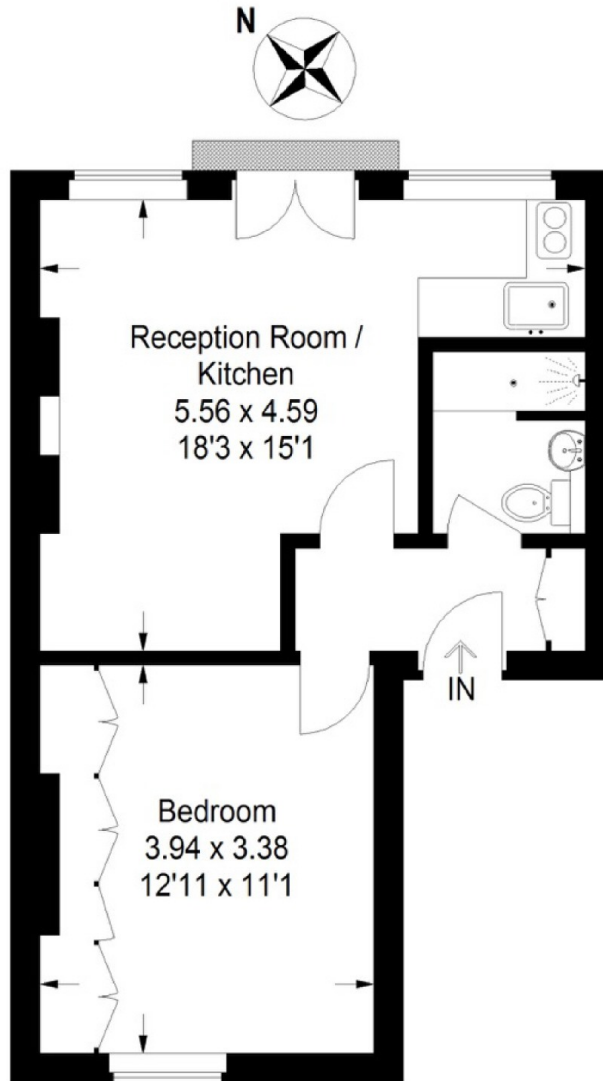
- Mayfair Village • One Bedroom • One Bathroom • Long Lease • Balcony • Lift •



SOUTH AUDLEY STREET,  
LONDON, W1K

## South Audley Street, W1K

Approximate Gross Internal Area = 39.9 sq m / 429 sq ft



### Third Floor

Illustration for identification purposes only,  
measurements are approximate, not to scale.  
FloorplansUsketch.com © 2016 (ID219394)