



# WETHERELL

MAYFAIR'S FINEST PROPERTIES



## WILTON STREET, SW1X

£8,250,000

A beautifully presented, low-built family townhouse situated on this exclusive street in Belgravia. The property boasts four en-suite bedrooms, two reception rooms, lift access to each floor and a terrace.

Located on the ground floor is wide hallway leading to a spacious kitchen, utility room and a bedroom that would work perfectly as guest or staff lodgings. To the front of the house is one of two reception rooms, a great space to entertain.

On the first floor is the larger reception room that is ideal for family entertainment as well as the principal bedroom that comprises of a walk in wardrobe, separate study and en-suite bathroom. At the top of the house there are a further two bedrooms, both en-suite and a private terrace.

WILTON LODGE IS LOCATED ON A QUIET STREET IN THE HEART OF BELGRAVIA. THE OPEN SPACES OF HYDE PARK AND THE BOUTIQUE SHOPS THAT HARRODS HAS TO OFFER ARE BOTH WITHIN WALKING DISTANCE.

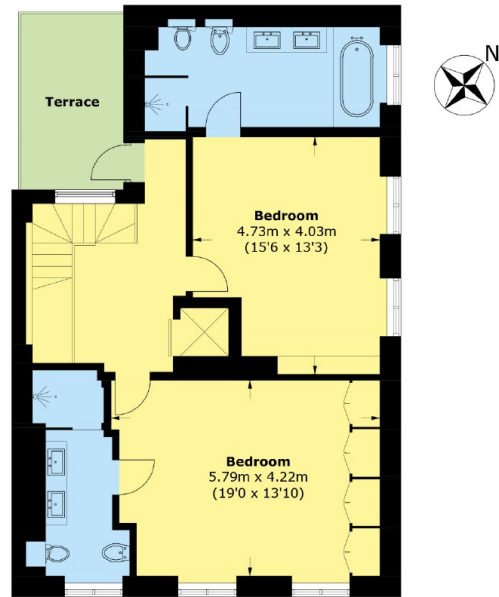


## FEATURES

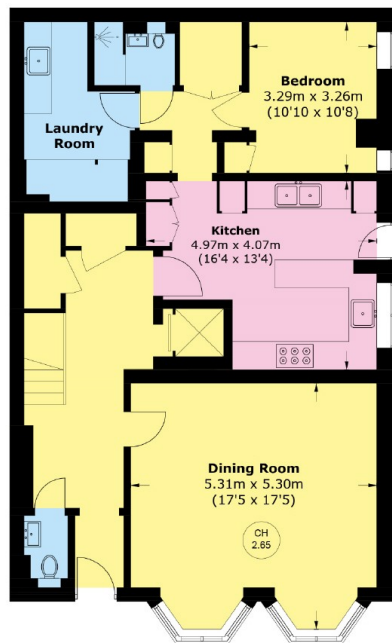
- Lift • Freehold • Terrace • Four Bedrooms • Separate Utility Room & Study • First Floor Reception Room •



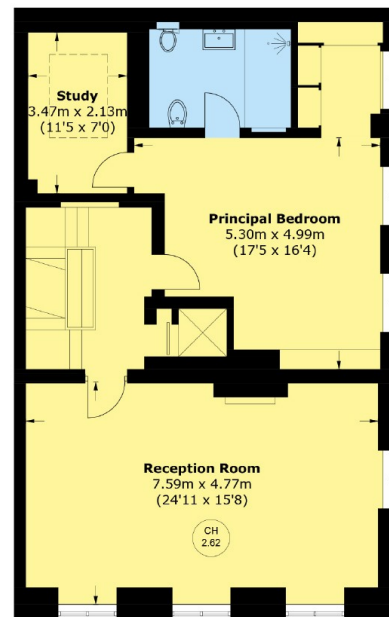
# WILTON STREET, LONDON, SW1X



**Second Floor**



**Ground Floor**



**First Floor**

Total area (approx.): 270.5 sq. m (2,911.5 sq. ft)  
Terrace area (approx.): 8.3 sq. m (89.3 sq. ft)



**WETHERELL**  
MAYFAIR'S FINEST PROPERTIES

102 Mount Street,  
London, W1K 2TH  
T: 020 7529 5566  
E: sales@wetherell.co.uk

We aim to make our particulars both accurate and reliable. However they are not guaranteed; nor do they form part of an offer or contract. If you require clarification on any points then please contact us, especially if you're traveling some distance to view. Please note that appliances and heating systems have not been tested and therefore no warranties can be given as to their working order.

wetherell.co.uk