

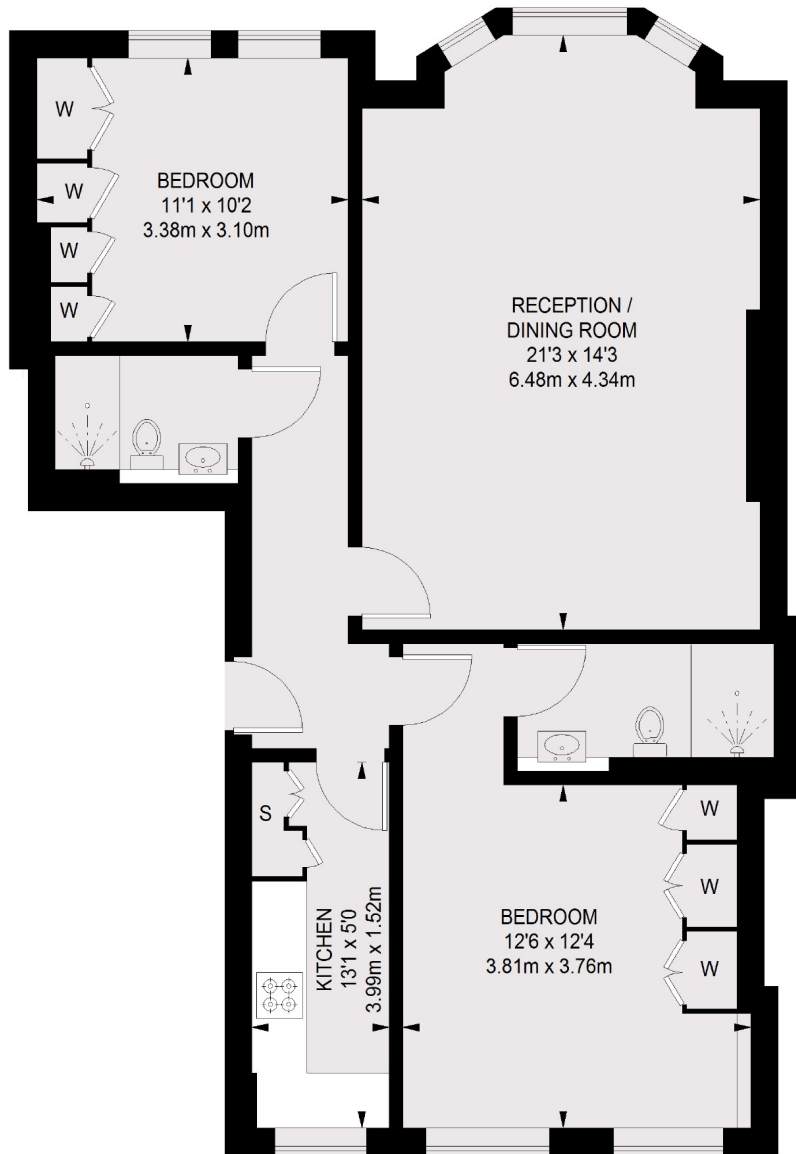


MOUNT STREET

MAYFAIR W1K

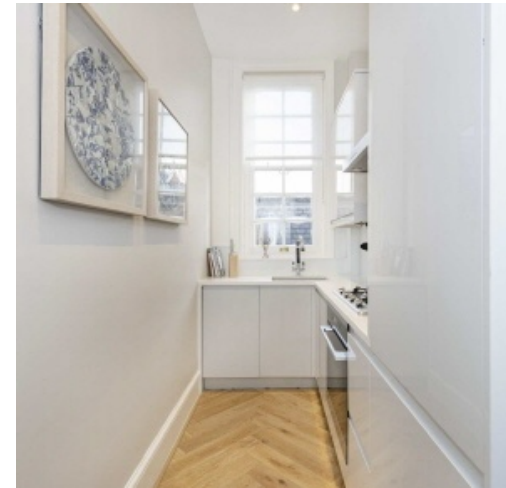


A REFURBISHED SECOND FLOOR APARTMENT WITH A RECEPTION/DINING ROOM, SEPARATE KITCHEN, TWO BEDROOMS AND TWO BATHROOMS.



FIRST FLOOR

TOTAL APPROX. FLOOR AREA 797 SQ. FT. (74.04 SQ. M.)



A refurbished second floor apartment with a reception/dining room, separate kitchen, two bedrooms and two bathrooms.



Mayfair's most highly regarded residential street, Mount Street is close to the Connaught Hotel, Mount Street Gardens and the bustling Berkeley Square.

FEATURES

- Reception/Dining Room
- Separate Kitchen
- Main Bedroom with Ensuite
- Guest Bedroom
- Guest Bathroom
- Excellent Location

Price: £1,650 Per week

We aim to make our particulars both accurate and reliable. However they are not guaranteed; nor do they form part of an offer or contract. If you require clarification on any points then please contact us, especially if you're traveling some distance to view. Please note that appliances and heating systems have not been tested and therefore no warranties can be given as to their working order. Energy Rating: D



WETHERELL
MAYFAIR'S FINEST PROPERTIES

102 Mount Street • London • W1K 2TH
T: 020 7529 5588 E: rentals@wetherell.co.uk

wetherell.co.uk

NO ONE KNOWS MAYFAIR BETTER THAN WETHERELL