

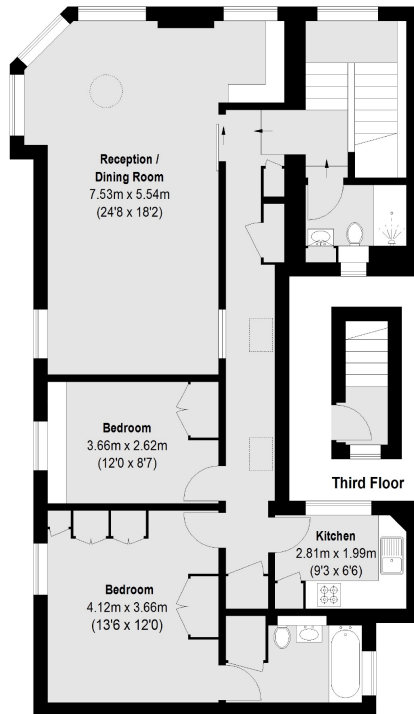


# HERTFORD STREET

MAYFAIR W1J



A STUNNING, NEWLY DECORATED TWO BEDROOM LATERAL APARTMENT, SET IN THE HEART OF SHEPHERDS MARKET. THIS APARTMENT BENEFITS FROM ABUNDANCE OF NATURAL LIGHT AND IS TO A HIGH SPECIFICATION.



**Fourth Floor**  
Total area (approx.): 97.62 sq. m (1051 Sq. ft)

Hertford Street runs parallel to Curzon Street and Piccadilly and is conveniently situated for the restaurants and bars of Shepherd Market. The closest tubes are Green Park and Hyde Park Corner.

#### FEATURES

- Two Double Bedrooms
- Two Bathrooms
- Wooden Flooring
- Top Floor Flat
- Separate Kitchen
- Modern Fixtures & Fittings

Price: £1,395 Per week

We aim to make our particulars both accurate and reliable. However they are not guaranteed; nor do they form part of an offer or contract. If you require clarification on any points then please contact us, especially if you're traveling some distance to view. Please note that appliances and heating systems have not been tested and therefore no warranties can be given as to their working order. Energy Rating: D



**WETHERELL**  
MAYFAIR'S FINEST PROPERTIES

102 Mount Street • London • W1K 2TH  
T: 020 7529 5588 E: rentals@wetherell.co.uk

wetherell.co.uk

NO ONE KNOWS MAYFAIR BETTER THAN WETHERELL