



FARM STREET

MAYFAIR W1J



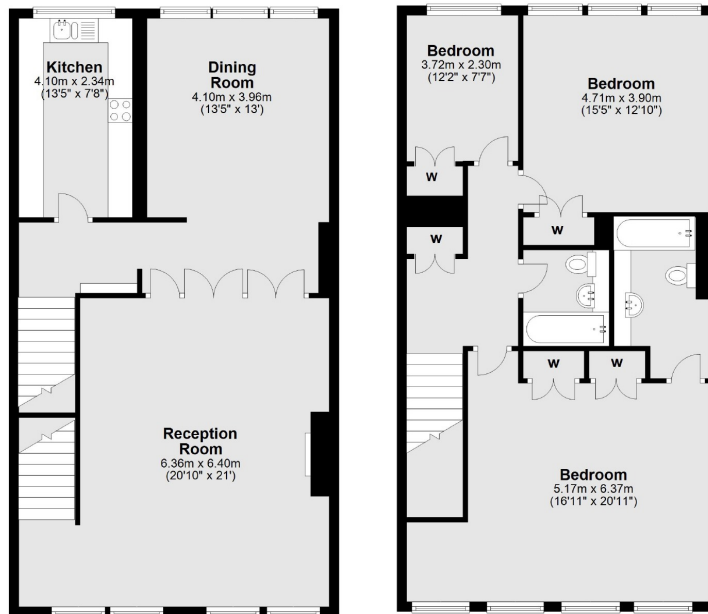
THIS SPACIOUS THREE BEDROOM MAISONETTE HAS BEEN NEWLY RENOVATED, FURNISHED AND INTERIOR DESIGNED TO AN EXCELLENT STANDARD THROUGHOUT.



First Floor

Second Floor

Ground Floor



Total area: approx. 155.9 sq. metres (1678.2 sq. feet)

This stunning apartment benefits from its own private entrance and is centrally located in Mayfair close to Hyde Park, transport links and shopping facilities. It has an elegant double reception/dining room with a separate modern integrated kitchen.

The property is part of an exclusive collection of apartments by the The Berkeley Square Estate, each featuring the highest level of specification and attention to detail.

There are two well-proportioned double bedrooms, one of which has a modern en suite bathroom and further family bathroom and single bedroom/office.

Farm Street is perfectly located in the heart of Mayfair Village, close to the exclusive restaurants, boutiques and galleries of Bond Street.

FEATURES

- Newly Renovated
- Three Bedrooms
- Two Bathrooms
- Private Entrance
- Separate Modern Kitchen
- Brand New Furniture

Price: £2,500 Per week

We aim to make our particulars both accurate and reliable. However they are not guaranteed; nor do they form part of an offer or contract. If you require clarification on any points then please contact us, especially if you're traveling some distance to view. Please note that appliances and heating systems have not been tested and therefore no warranties can be given as to their working order. Energy Rating: E



WETHERELL
MAYFAIR'S FINEST PROPERTIES

102 Mount Street • London • W1K 2TH
T: 020 7529 5588 E: rentals@wetherell.co.uk

wetherell.co.uk