



**WETHERELL**  
MAYFAIR'S FINEST PROPERTIES



## BROOK STREET, W1S

£4,000 PER WEEK

This brand new three bedroom apartment has been finished to the highest specification providing quality and contemporary living.

This impressive apartment spanning over 1,900 sq.ft provides the very best finishes and technology of a new home.

The historic, restored facade features exquisite stone carvings and generous windows which fill the rooms with light. Every element, from the home entertainment system to the bespoke kitchen and bathrooms, is of exceptional quality.

Further benefits include luxury FENDI furniture, secure entry systems and CCTV, secure bicycle storage area, lift access to all floors and access to the communal roof terrace.

BROOK STREET SITS BETWEEN THE WORLD-CLASS, LUXURY RETAIL OFFERING ON BOND STREET AND THE ELEGANTLY LANDSCAPED HANOVER SQUARE. BOND STREET UNDERGROUND STATION WILL PROVIDE DIRECT ACCESS TO THE ELIZABETH LINE.





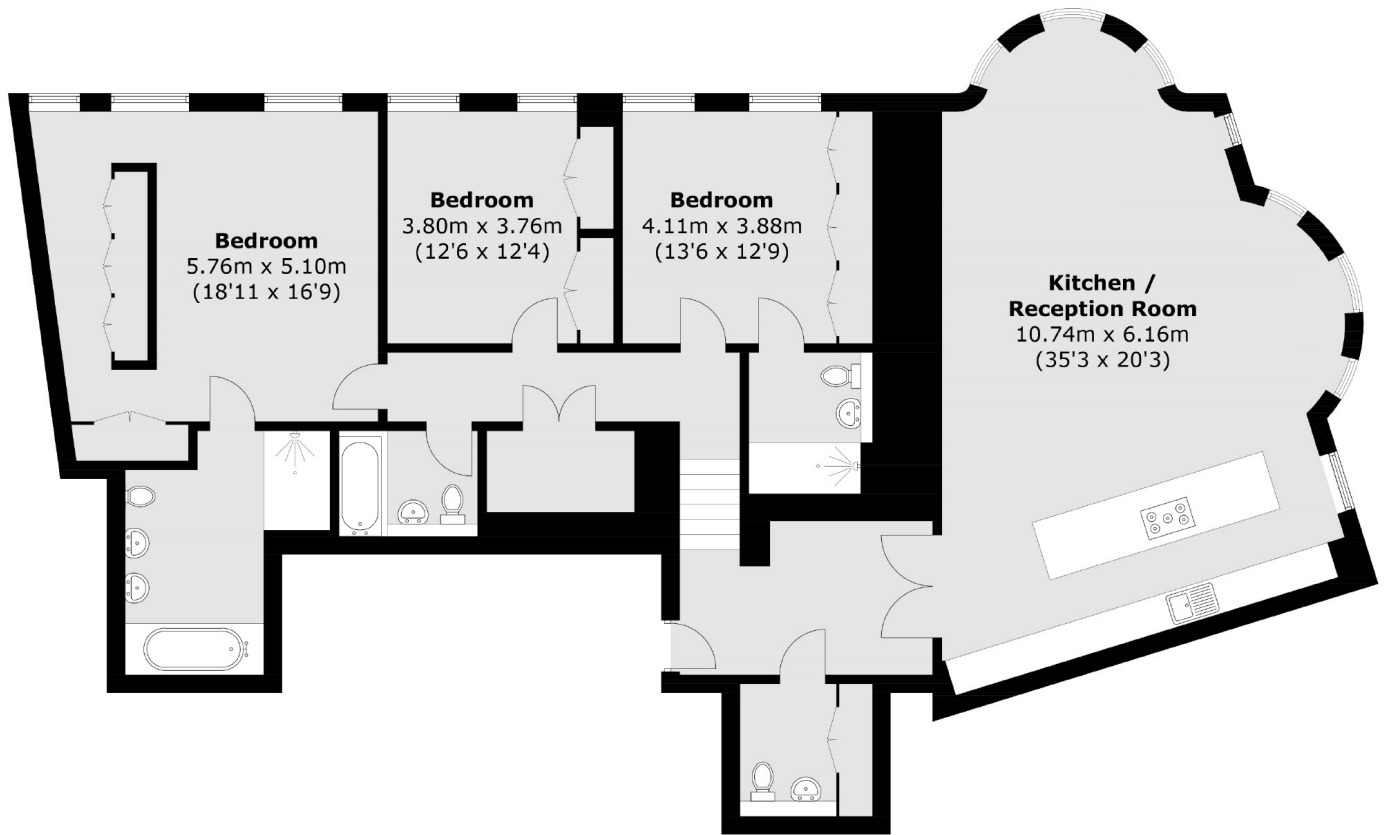
## FEATURES

- Three Double Bedrooms • Three Luxury Bathrooms • Air Conditioning • Third Floor (Lift Access) • Communal Roof Terrace • Luxury FENDI furniture •





# BROOK STREET, LONDON, W1S



Total area (approx.): 179.5 sq. m (1932.1 sq. ft)



**WETHERELL**  
MAYFAIR'S FINEST PROPERTIES

102 Mount Street,  
London, W1K 2TH  
T: 020 7529 5566  
E: sales@wetherell.co.uk

We aim to make our particulars both accurate and reliable. However they are not guaranteed; nor do they form part of an offer or contract. If you require clarification on any points then please contact us, especially if you're traveling some distance to view. Please note that appliances and heating systems have not been tested and therefore no warranties can be given as to their working order.

wetherell.co.uk