

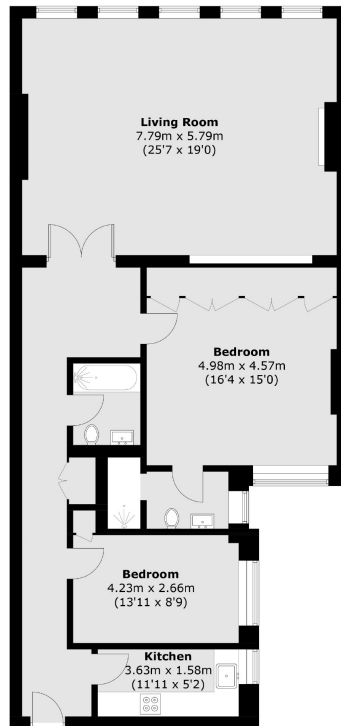


# UPPER BROOK STREET

MAYFAIR W1K



A RECENTLY RENOVATED TWO DOUBLE BEDROOM APARTMENT LOCATED ON THE SECOND FLOOR OF THIS PERIOD BLOCK WITH PORTER, LIFT AND SMART COMMON AREAS.



Area (approx.): 117.4 sq. m (1,263.7 sq. ft)

The apartment has been finished to the highest of standards throughout with two double bedrooms, one luxury en suite bathroom and additional family bathroom.

The 26ft drawing room offers impressive living space with five south facing windows which fill the apartment with natural light.

The building is on the south side of Upper Brook Street between Park Street and Park Lane, close to Hyde Park.

#### FEATURES

- Two Double Bedrooms
- Two Luxury Bathrooms
- Recently Renovated
- Portered Building
- Second Floor (Lift Access)
- Wooden Flooring

Price: £2,750 Per week

We aim to make our particulars both accurate and reliable. However they are not guaranteed; nor do they form part of an offer or contract. If you require clarification on any points then please contact us, especially if you're traveling some distance to view. Please note that appliances and heating systems have not been tested and therefore no warranties can be given as to their working order. Energy Rating: C



**WETHERELL**  
MAYFAIR'S FINEST PROPERTIES

102 Mount Street • London • W1K 2TH  
T: 020 7529 5588 E: rentals@wetherell.co.uk

wetherell.co.uk

NO ONE KNOWS MAYFAIR BETTER THAN WETHERELL