

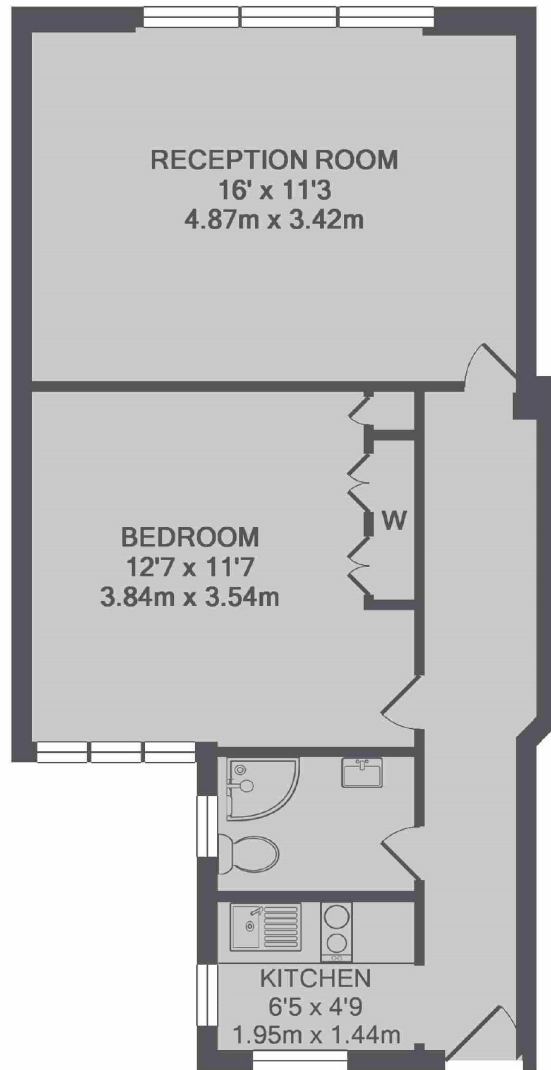


GROSVENOR STREET

MAYFAIR W1K



SET ON THE SIXTH FLOOR, THIS ONE BEDROOM APARTMENT HAS BEEN RECENTLY REFURBISHED. THE PROPERTY BENEFITS FROM SECURE ENTRY SYSTEMS, LIFT ACCESS AND A DAY PORTER.



TOTAL APPROX. FLOOR AREA 474 SQ.FT. (44.0 SQ.M.)
Made with Metropix ©2018

We aim to make our particulars both accurate and reliable. However they are not guaranteed; nor do they form part of an offer or contract. If you require clarification on any points then please contact us, especially if you're traveling some distance to view. Please note that appliances and heating systems have not been tested and therefore no warranties can be given as to their working order. Energy Rating: E



Ideally situated close to Bond Street Station and within moments of Oxford Street, Grosvenor Square and Hyde Park.

FEATURES

- One Double Bedroom
- Sixth Floor (Lift Access)
- Recently Refurbished
- Day Porter
- Built-In Storage
- Excellent Location

Price: £650 Per week



WETHERELL
MAYFAIR'S FINEST PROPERTIES

102 Mount Street • London • W1K 2TH
T: 020 7529 5588 E: rentals@wetherell.co.uk
wetherell.co.uk

NO ONE KNOWS MAYFAIR BETTER THAN WETHERELL