

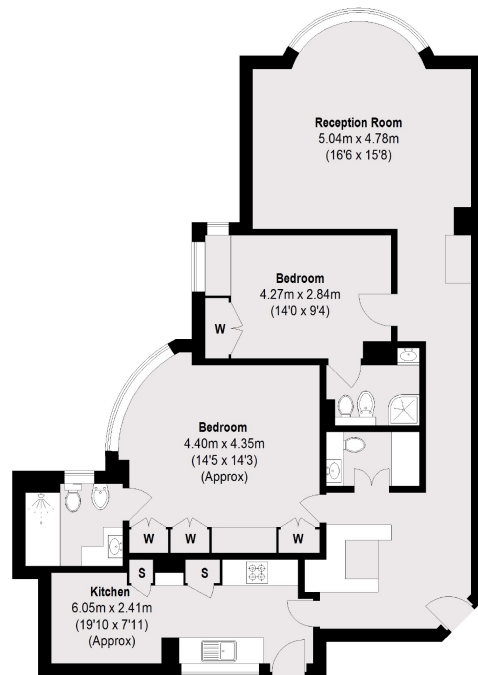


UPPER GROSVENOR STREET

MAYFAIR W1K



A RECENTLY RENOVATED TWO BEDROOM APARTMENT SUPERBLY LOCATED IN THE HEART OF MAYFAIR SITUATED JUST OFF GROSVENOR SQUARE.



Total area (approx.): 100.95 sq. m (1087 Sq. ft)

On the third floor of a sought after period building with 24 hour uniformed porter, this modern apartment benefits from air-conditioning throughout.

The property is well proportioned with a south facing reception room and two double bedrooms, both with ample storage and large en suite bathrooms. An additional guest shower room/cloakroom and a generous separate eat in kitchen make this the ideal Mayfair property.

Grosvenor Square is located to the east of Hyde Park and to the north of Piccadilly. The property is within reach of the many amenities, restaurants and flagship designer stores offered by Mount Street, New Bond Street and their surrounding areas.

FEATURES

- Two Double Bedrooms
- Two Bathrooms
- 24 hr Uniformed Porter
- Modern Apartment
- Wooden Flooring
- Lift Access

Price: £2,000 Per week

We aim to make our particulars both accurate and reliable. However they are not guaranteed; nor do they form part of an offer or contract. If you require clarification on any points then please contact us, especially if you're traveling some distance to view. Please note that appliances and heating systems have not been tested and therefore no warranties can be given as to their working order. Energy Rating: C



WETHERELL
MAYFAIR'S FINEST PROPERTIES

102 Mount Street • London • W1K 2TH
T: 020 7529 5588 E: rentals@wetherell.co.uk

wetherell.co.uk

NO ONE KNOWS MAYFAIR BETTER THAN WETHERELL