

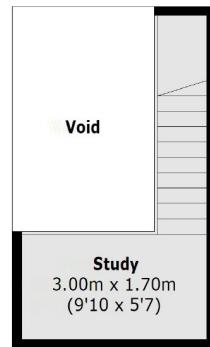
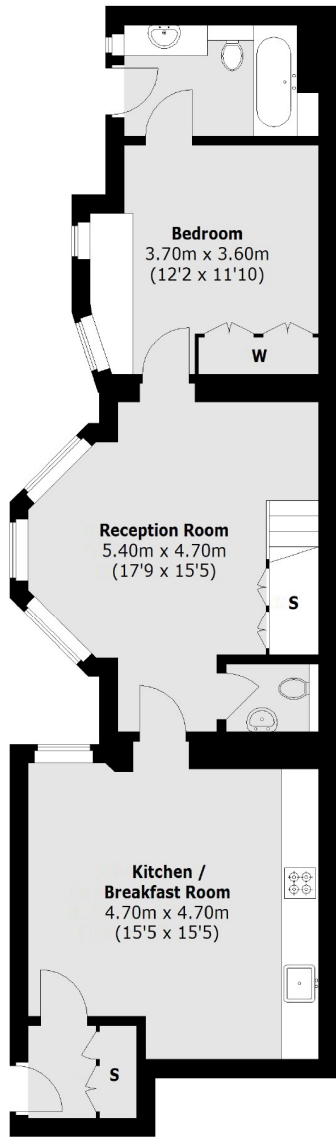


ALBEMARLE STREET

MAYFAIR W1S



A SPACIOUS ONE BEDROOM FLAT LOCATED ON THE FIRST FLOOR OF A WELL MAINTAINED GEORGIAN BUILDING COMPLETE WITH A RECEPTION ROOM WITH GALLERIED STUDY AREA, SEPARATE KITCHEN/BREAKFAST ROOM, BEDROOM WITH EN SUITE BATHROOM AND GUEST W/C.



Mezzanine

First Floor

Total area (approx.): 73.0 sq. m (786 sq. ft)

We aim to make our particulars both accurate and reliable. However they are not guaranteed; nor do they form part of an offer or contract. If you require clarification on any points then please contact us, especially if you're traveling some distance to view. Please note that appliances and heating systems have not been tested and therefore no warranties can be given as to their working order. Energy Rating: D



Albemarle Street is ideally located for Green Park tube station on the Piccadilly, Victoria and Jubilee lines. Piccadilly Circus and the amenities and attractions of the West End are close by.

FEATURES

- One Bedroom
- Wooden Flooring
- Modern Fixtures & Fittings
- Galleried Study Space
- Secure Entry Systems
- Excellent Location

Price: £725 Per week



WETHERELL
MAYFAIR'S FINEST PROPERTIES

102 Mount Street • London • W1K 2TH
T: 020 7529 5588 E: rentals@wetherell.co.uk

wetherell.co.uk

NO ONE KNOWS MAYFAIR BETTER THAN WETHERELL