



WETHERELL
MAYFAIR'S FINEST PROPERTIES



SHEPHERDS CLOSE, W1K

£4,750 PER WEEK

A beautifully presented four bedroom house finished to an excellent standard with luxurious fixtures and fittings throughout.

Accommodation consists of a reception room, TV room and a large eat-in kitchen. There is a main bedroom with dressing area and en suite bathroom, two further double bedrooms one with en suite, further bathroom, staff quarters and a small office.

The property has a charming patio and a secluded communal garden.

The house further benefits from Crestron controlled automation for heating/air-conditioning, door entry system, lighting, TV and audio.

SHEPHERDS CLOSE IS SITUATED OFF LEES PLACE, A SHORT DISTANCE FROM GROSVENOR SQUARE. IT IS WELL PLACED FOR THE INTERNATIONALLY RENOWNED SHOPS RESTAURANTS AND AMENITIES OF MAYFAIR.

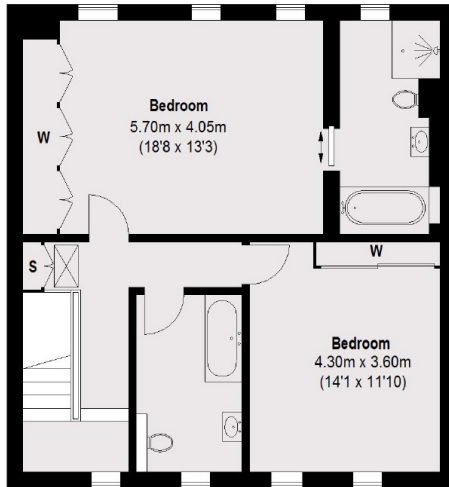


FEATURES

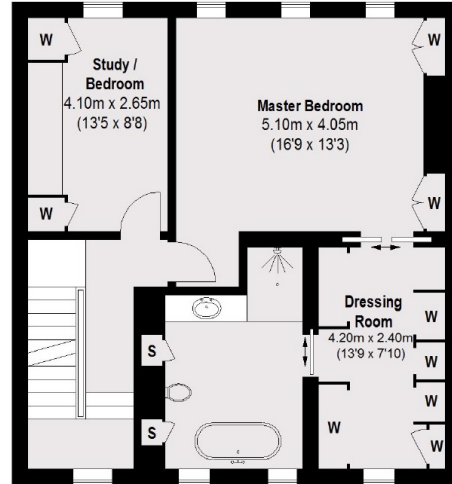
- Four Double Bedrooms
- Four Bathrooms
- Luxury Finish
- Private Patio
- Three Reception Rooms
- Communal Garden



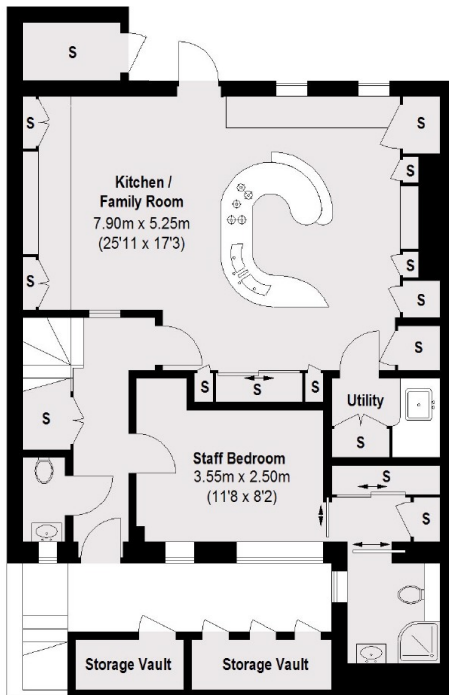
SHEPHERDS CLOSE, LONDON, W1K



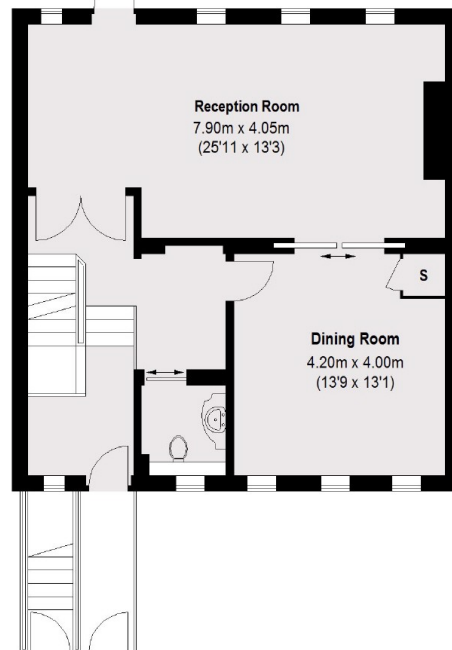
Second Floor



First Floor



Lower Ground Floor



Ground Floor

Total area (approx.): 274.16 sq. m (2951 sq. ft)

Vault: 4.61 sq. m (50 sq. ft)



WETHERELL
MAYFAIR'S FINEST PROPERTIES

102 Mount Street,
London, W1K 2TH
T: 020 7529 5566
E: sales@wetherell.co.uk

We aim to make our particulars both accurate and reliable. However they are not guaranteed; nor do they form part of an offer or contract. If you require clarification on any points then please contact us, especially if you're traveling some distance to view. Please note that appliances and heating systems have not been tested and therefore no warranties can be given as to their working order.

wetherell.co.uk