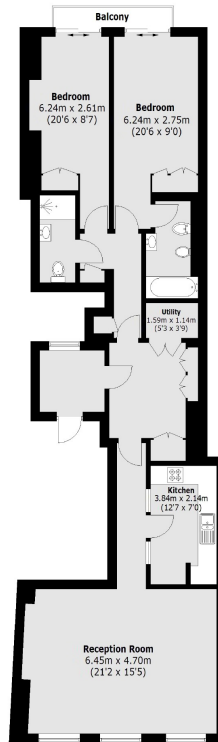




JERMYN STREET MAYFAIR SW1Y



THIS MODERN TWO BEDROOM, TWO BATHROOM APARTMENT IS SITUATED ON THE SECOND FLOOR OF THIS SECURE BUILDING AND IN THE HEART OF ST JAMES.



Total area (approx.): 107.9 sq. m (1,161.4 sq. ft)
Balcony: 2.5 sq. m (26.9 sq. ft)

The apartment benefits air-conditioning throughout, a rear-facing balcony, direct lift access, and contemporary fixtures and fittings throughout.

The building is located in the centre of London's oldest district and is close to the many amenities of St. James's, Mayfair, Piccadilly and Soho.

FEATURES

- Two Double Bedrooms
- Two Bathrooms
- Air Conditioning
- Balcony
- Lift Access
- Wooden Flooring

Price: £1,250 Per week

We aim to make our particulars both accurate and reliable. However they are not guaranteed; nor do they form part of an offer or contract. If you require clarification on any points then please contact us, especially if you're traveling some distance to view. Please note that appliances and heating systems have not been tested and therefore no warranties can be given as to their working order. Energy Rating: C



WETHERELL
MAYFAIR'S FINEST PROPERTIES

102 Mount Street • London • W1K 2TH
T: 020 7529 5588 E: rentals@wetherell.co.uk

wetherell.co.uk

NO ONE KNOWS MAYFAIR BETTER THAN WETHERELL