



WETHERELL
MAYFAIR'S FINEST PROPERTIES



BALFOUR PLACE, W1K

£3,500,000

A stunning two-bedroom, two-bathroom apartment in the heart of Mayfair Village.

Situated on the fourth floor of this attractive red brick building, and measuring 1044 sq. ft, this apartment offers superior living just moments from Mayfair's finest amenities.

The apartment has been meticulously renovated throughout to create a best in class lateral space in Mayfair Village. There is a 24ft wide, west facing reception room with herringbone wood flooring, bespoke cabinetry and modern fittings. The contemporary kitchen has built in appliances and has been opened up to provide a smart breakfast counter adjoining the reception room.

Both bedrooms are quietly positioned at the rear of the property with the large principal bedroom enjoying an east facing vista, built in wardrobes and an en suite shower room. The second bedroom also has built in wardrobes and benefits from a separate shower room accessed from the hallway.

BALFOUR PLACE IS PERFECTLY LOCATED FOR THE VARIOUS BOUTIQUES, RESTAURANTS, AND HOTELS OF CENTRAL MAYFAIR. IT RUNS BETWEEN MOUNT STREET AND ALDFORD STREET AND IS A SHORT DISTANCE FROM BOND STREET TUBE.

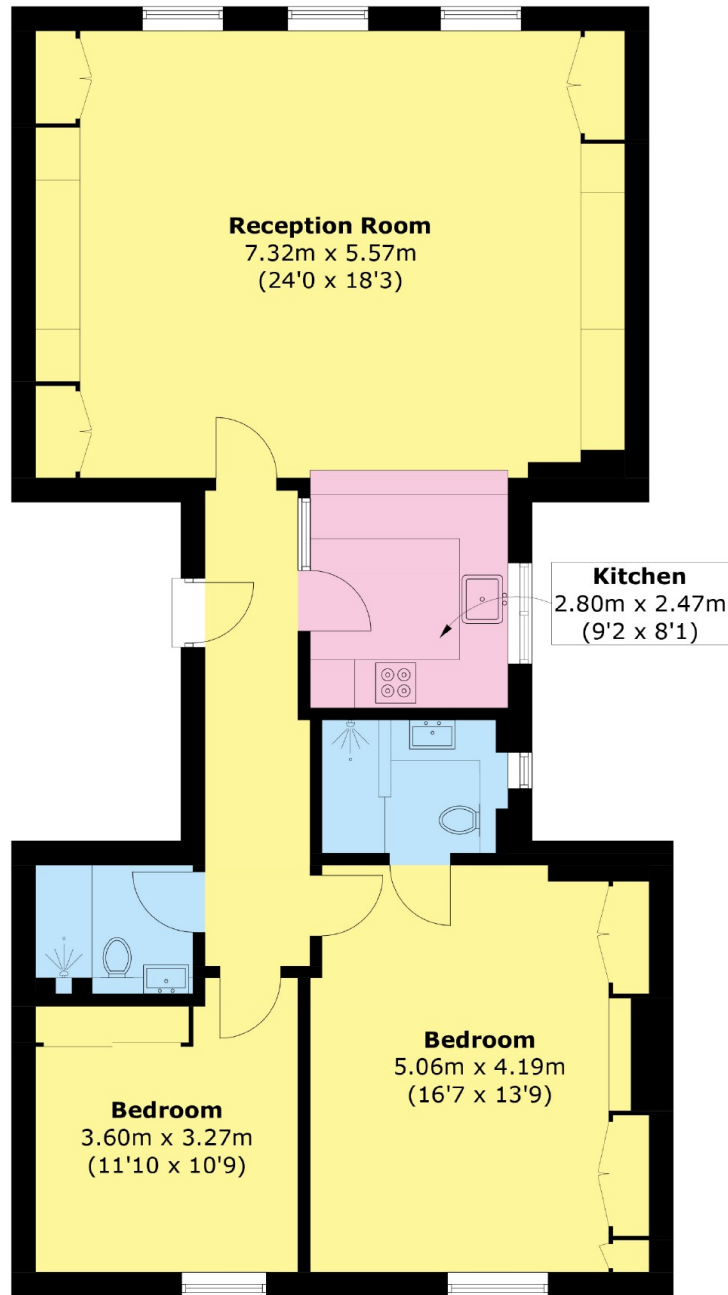


FEATURES

- Stunning Renovation • Two Bedrooms • Two Bathrooms • Fourth Floor • Lift • Resident Caretaker •



BALFOUR PLACE, LONDON, W1K



4th Floor

Area (approx.): 97.0 sq. m (1,044.1 sq. ft)



WETHERELL
MAYFAIR'S FINEST PROPERTIES

102 Mount Street,
London, W1K 2TH
T: 020 7529 5566
E: sales@wetherell.co.uk

We aim to make our particulars both accurate and reliable. However they are not guaranteed; nor do they form part of an offer or contract. If you require clarification on any points then please contact us, especially if you're traveling some distance to view. Please note that appliances and heating systems have not been tested and therefore no warranties can be given as to their working order.

wetherell.co.uk