



WETHERELL
MAYFAIR'S FINEST PROPERTIES



HERTFORD STREET, W1J

£1,750,000

A superb light-filled first floor, one-bedroom apartment with 3.5 metre ceiling heights, lift access and a share of the freehold.

Situated in a stunning period building and occupying the entire first floor, this one-bedroom apartment measures 715 square foot. There is an exceptional reception room with 3.5 metre ceilings, walnut flooring and 3 tall French windows, all leading out on to an ornamental balcony. The kitchen, replete with integrated appliances, is nestled at the rear of the reception room and can be separated by full height, sliding walnut doors.

The spacious bedroom with floor to ceiling windows is quietly located at the rear of the property and benefits from ample built in wardrobes and a large en suite bathroom with Vola taps and a fitted bath. There is a separate guest cloakroom off the hallway. Each room of the apartment enjoys electric underfloor heating with individual thermostats allowing optimised temperature control. The apartment also has a stand-alone private utility room.

Hertford Street was first built in between 1764-1771 by Henry Holland the elder, his son and John Eldridge.

LOCATED IN THE HEART OF SHEPHERD MARKET, HERTFORD STREET IS CLOSE TO ALL OF MAYFAIR'S AMENITIES AND OPEN SPACES OF BOTH HYDE PARK AND GREEN PARK.

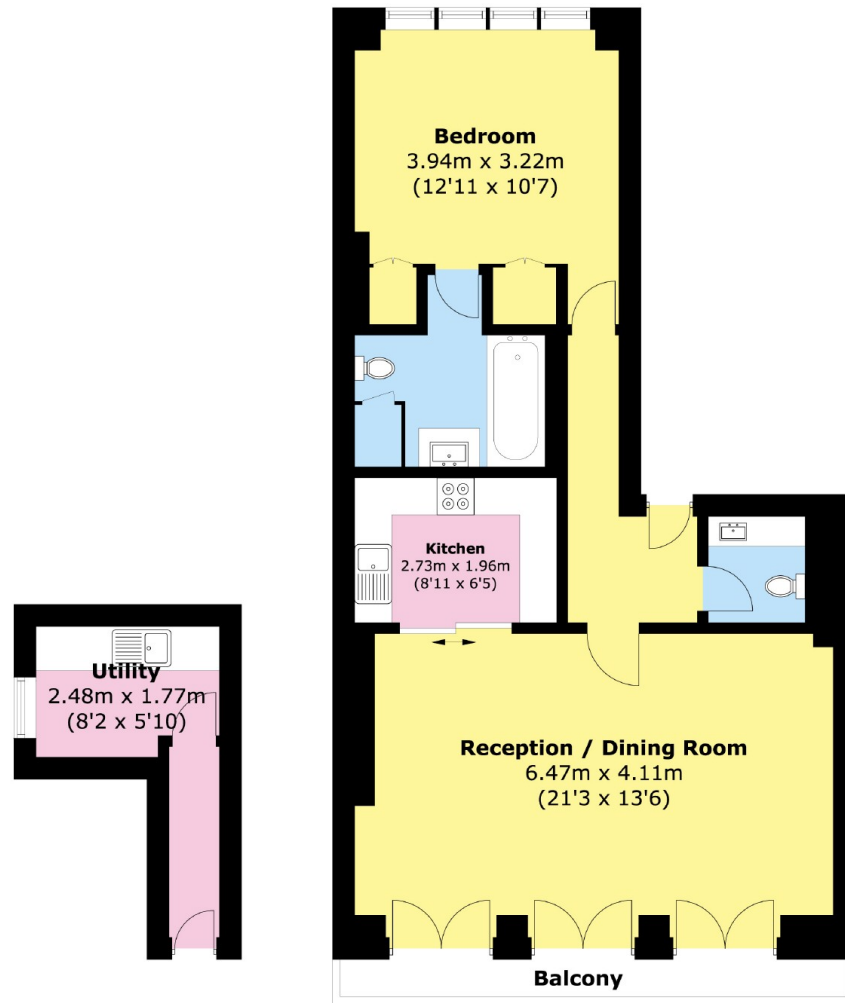


FEATURES

- One Reception Room • 3.5 Metre Ceiling Heights • One Bedroom • One Bathroom • Modern Kitchen • Period Conversion •



HERTFORD STREET, LONDON, W1J



First Floor

Area (approx: 66.4 sq. m. (715 sq. ft.))