

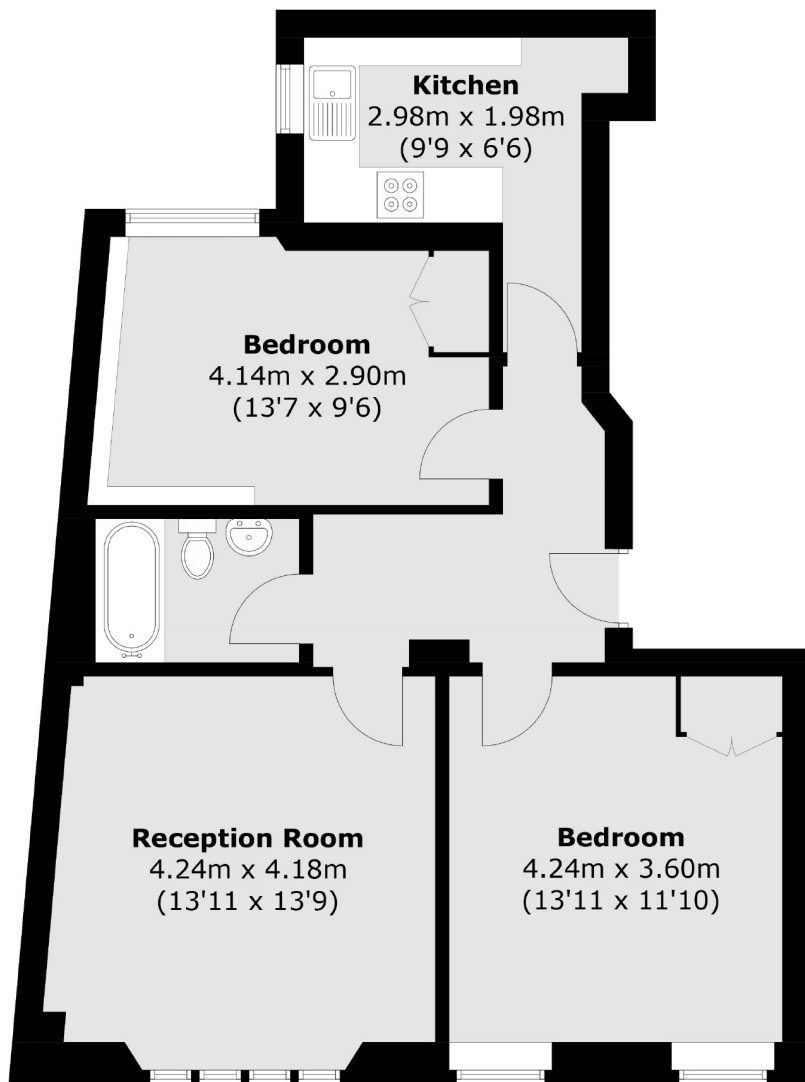


BERKELEY STREET

MAYFAIR W1J



A CHARMING, NEWLY RENOVATED TWO DOUBLE BEDROOM APARTMENT ON THE FIRST FLOOR OF A PERIOD BUILDING JUST SOUTH OF BERKELEY SQUARE.



First Floor

Total area (approx.): 66.1 sq. m (711.5 sq. ft)

We aim to make our particulars both accurate and reliable. However they are not guaranteed; nor do they form part of an offer or contract. If you require clarification on any points then please contact us, especially if you're traveling some distance to view. Please note that appliances and heating systems have not been tested and therefore no warranties can be given as to their working order. Energy Rating: C



A charming, newly renovated two double bedroom apartment on the first floor of a period building just south of Berkeley Square. The property benefits from wooden floors throughout and a dedicated porter service.

Berkeley Street runs south from Berkeley Square to Piccadilly and is ideal for Green Park tube station on the Piccadilly, Victoria and Jubilee lines. Piccadilly Circus and the amenities and attractions of the West End are close by.

FEATURES

- Two Double Bedrooms
- Newly Renovated
- Wooden Flooring
- Day Porter
- Lift Access
- Excellent Location

Price: £950 Per week



WETHERELL
MAYFAIR'S FINEST PROPERTIES

102 Mount Street • London • W1K 2TH
T: 020 7529 5588 E: rentals@wetherell.co.uk
wetherell.co.uk

NO ONE KNOWS MAYFAIR BETTER THAN WETHERELL