



NORTH AUDLEY STREET

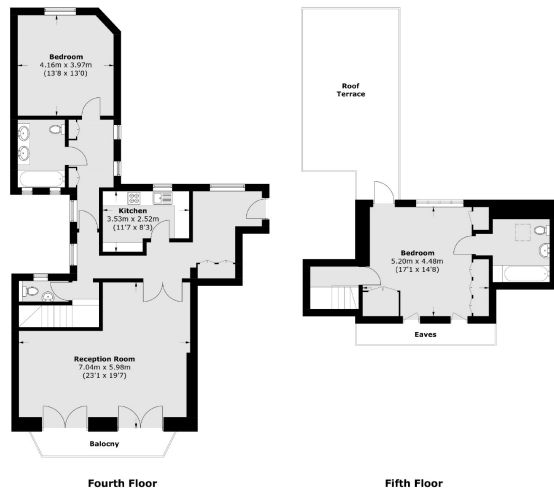
MAYFAIR W1K



SET ON THE FOURTH AND FIFTH FLOORS, THIS SIZEABLE TWO BEDROOM DUPLEX FLAT OFFERS AMPLE LIVING SPACE WITH BOTH EN SUITE BEDROOMS, ROOF TERRACE, BALCONY AND LOCATED ON THE HIGHLY SOUGHT AFTER NORTH AUDLEY STREET.



North Audley Street is conveniently located close to Selfridges and all the amenities and travel links of Bond Street and Marble Arch underground stations.



Total area (approx.): 128.1 sq. m (1,378.8 sq. ft)
Roof Terrace / Balcony : 33.8 sq. m (363.8 sq. ft)
(Excluding Eaves)



FEATURES

- Two Double Bedrooms
- Two Bathrooms
- Lift Access
- Roof Terrace
- Split-Level
- Excellent Location

Price: £950 Per week

We aim to make our particulars both accurate and reliable. However they are not guaranteed; nor do they form part of an offer or contract. If you require clarification on any points then please contact us, especially if you're traveling some distance to view. Please note that appliances and heating systems have not been tested and therefore no warranties can be given as to their working order. Energy Rating: G



WETHERELL
MAYFAIR'S FINEST PROPERTIES

102 Mount Street • London • W1K 2TH
T: 020 7529 5588 E: rentals@wetherell.co.uk

wetherell.co.uk

NO ONE KNOWS MAYFAIR BETTER THAN WETHERELL