

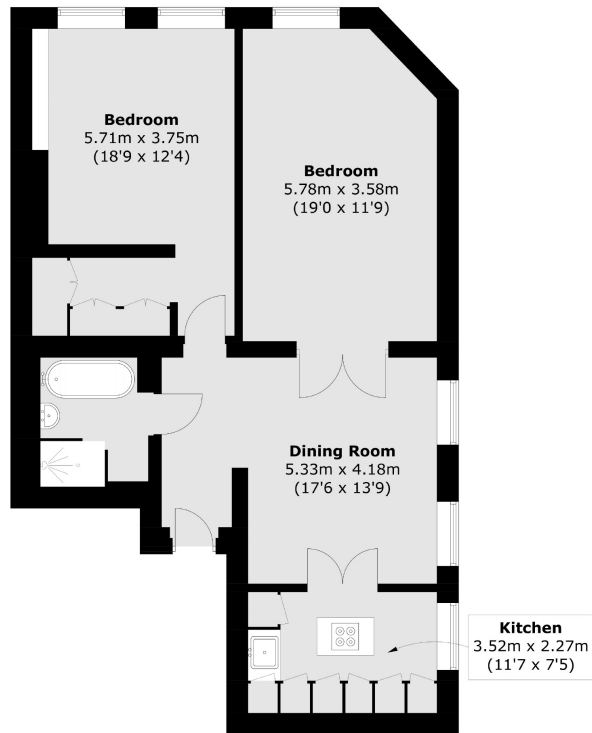


# SOUTH AUDLEY STREET

## MAYFAIR W1K



A LUXURY ONE BEDROOM APARTMENT SITUATED IN THE HEART OF MAYFAIR. THE ENTRANCE TO THIS BUILDING IS ON SOUTH AUDLEY STREET JUST OPPOSITE HARRY'S BAR.



Total area (approx.): 79.3 sq. m (853.6 sq. ft)

Entering the property on the third floor you are greeted by a bright open-plan hallway that leads to a dining area, reception room, and an open-plan kitchen overlooking Aldford Street and South Audley Street. Also accessible via the hallway is a large bedroom with built-in wardrobes and a modern bathroom.

South Audley Street is perfectly located for the various boutiques, restaurants, and hotels of central Mayfair. It runs between Grosvenor Square and Curzon Street.

#### FEATURES

- Spacious Double Bedroom
- Wood Flooring
- Dual Aspect
- Modern
- Open-Plan Kitchen
- Excellent Location

Price: £1,500 Per week

We aim to make our particulars both accurate and reliable. However they are not guaranteed; nor do they form part of an offer or contract. If you require clarification on any points then please contact us, especially if you're traveling some distance to view. Please note that appliances and heating systems have not been tested and therefore no warranties can be given as to their working order. Energy Rating: D



**WETHERELL**  
MAYFAIR'S FINEST PROPERTIES

102 Mount Street • London • W1K 2TH  
T: 020 7529 5588 E: rentals@wetherell.co.uk

wetherell.co.uk

NO ONE KNOWS MAYFAIR BETTER THAN WETHERELL