



WETHERELL

MAYFAIR'S FINEST PROPERTIES



CHARLES STREET, W1J

£1,975,000

An immaculately presented two bedroom apartment with secure parking, porter and a share of the freehold.

The apartment measures 892 sq ft and is situated on the ground floor of this smart, purpose built block. The large, open plan reception room has been meticulously renovated with a SieMatic kitchen and integrated Gaggenau appliances. The living area is neatly zoned and has direct access through sliding glass doors on to the communal garden.

The principal bedroom has built in wardrobes and an en suite shower room. There is a second bedroom and separate guest shower room. The apartment comes with a secure underground parking space, share of the freehold and benefits from the building's live in porter.

Rosebery Court occupies a prominent position from Charles Street through to Hays Mews.

CHARLES STREET IS ONE OF MAYFAIR'S PREMIER ADDRESSES MOMENTS FROM BERKELEY SQUARE. IT IS WITHIN WALKING DISTANCE OF BOTH HYDE PARK AND GREEN PARK AND CLOSE TO GREEN PARK TUBE STATION.

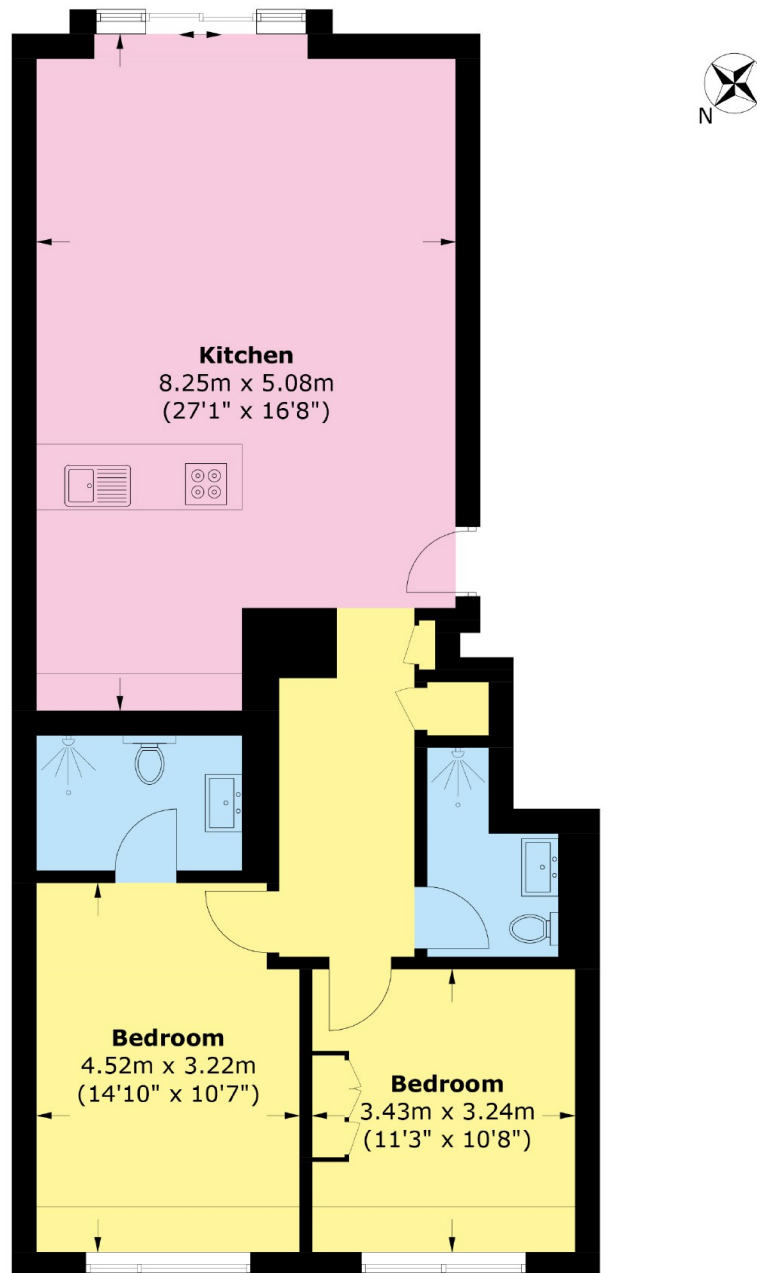


FEATURES

- Two Bedroom • Two Bathroom • Secure Underground Parking • Share of Freehold • Live in Porter • Communal Gardens •



CHARLES STREET, LONDON, W1J



Ground Floor

Total area (approx.): 82.9 sq. m (892.3 sq. ft)