

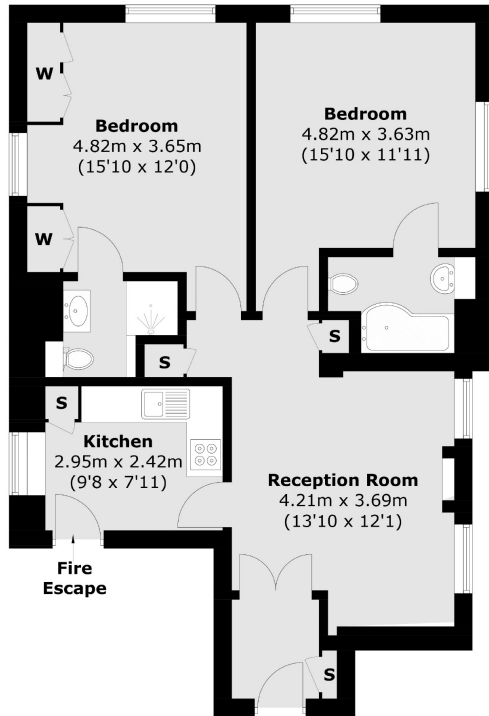


CHESTERFIELD GARDENS

MAYFAIR W1J



THIS TWO DOUBLE BEDROOM, TWO BATHROOM APARTMENT IS LOCATED IN THIS POPULAR APARTMENT BLOCK WITH 24-HOUR PORTER AND LIFT.



Fourth Floor

Total area (approx.): 70.2 sq. m (755.6 sq. ft)

In the heart of Mayfair this property is close to the green spaces of Hyde Park, Green Park and the world famous shops and restaurants of Mayfair.

FEATURES

- Two Double Bedrooms
- Two En Suite Bathrooms
- Separate Kitchen
- 24-Hour Porter
- Lift Access
- Excellent Location

Price: £1,100 Per week

We aim to make our particulars both accurate and reliable. However they are not guaranteed; nor do they form part of an offer or contract. If you require clarification on any points then please contact us, especially if you're traveling some distance to view. Please note that appliances and heating systems have not been tested and therefore no warranties can be given as to their working order. Energy Rating: D



WETHERELL
MAYFAIR'S FINEST PROPERTIES

102 Mount Street • London • W1K 2TH
T: 020 7529 5588 E: rentals@wetherell.co.uk

wetherell.co.uk

NO ONE KNOWS MAYFAIR BETTER THAN WETHERELL