

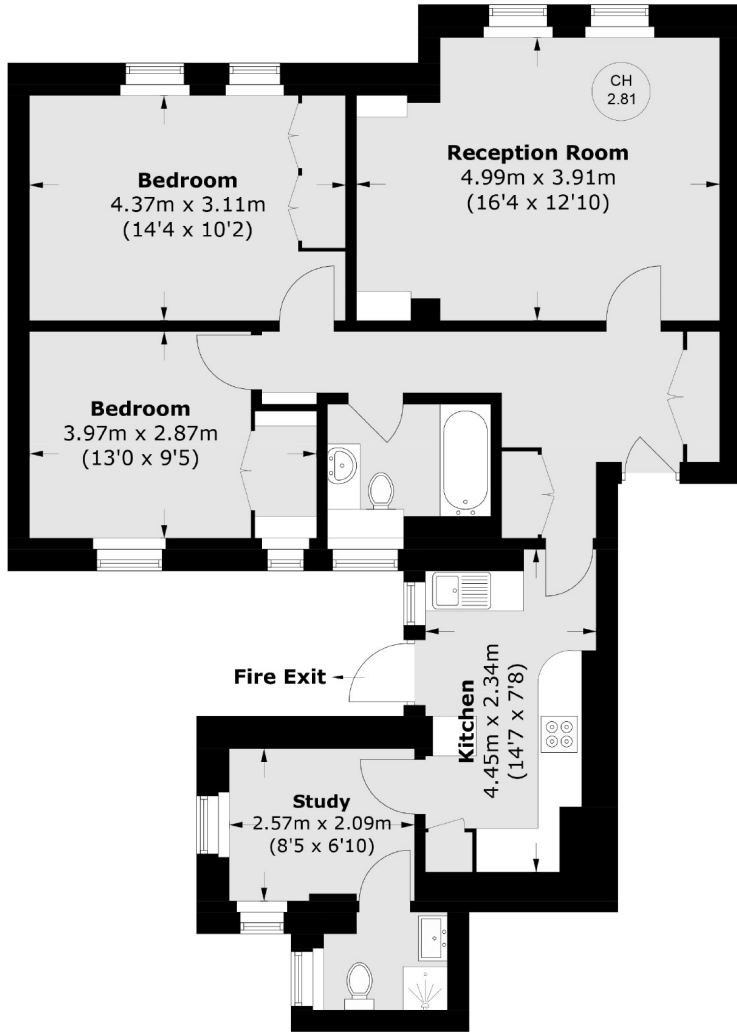


CURZON STREET

MAYFAIR W1J



BRIGHT AND SPACIOUS SECOND FLOOR APARTMENT WITH LIFT ACCESS IN A PORTERED PERIOD BUILDING AND LOCATED IN CENTRAL MAYFAIR.



Second Floor

Total area (approx.): 78.6 sq. m (846.0 sq. ft)



The property is presented in good condition with a large reception, separate kitchen, two bedrooms, two bathrooms and study.



Located in one of the most exclusive areas of London, Curzon Street runs from Park Lane to Berkeley Square. Excellent transport links are also afforded by road and rail, with Green Park tube station only 0.3 miles away.

FEATURES

- Two Double Bedrooms
- Two Bathrooms
- Portered Building
- Separate Kitchen
- Study
- Furnished

Price: £990 Per week

We aim to make our particulars both accurate and reliable. However they are not guaranteed; nor do they form part of an offer or contract. If you require clarification on any points then please contact us, especially if you're traveling some distance to view. Please note that appliances and heating systems have not been tested and therefore no warranties can be given as to their working order. Energy Rating: D



WETHERELL
MAYFAIR'S FINEST PROPERTIES

102 Mount Street • London • W1K 2TH
T: 020 7529 5588 E: rentals@wetherell.co.uk

wetherell.co.uk