

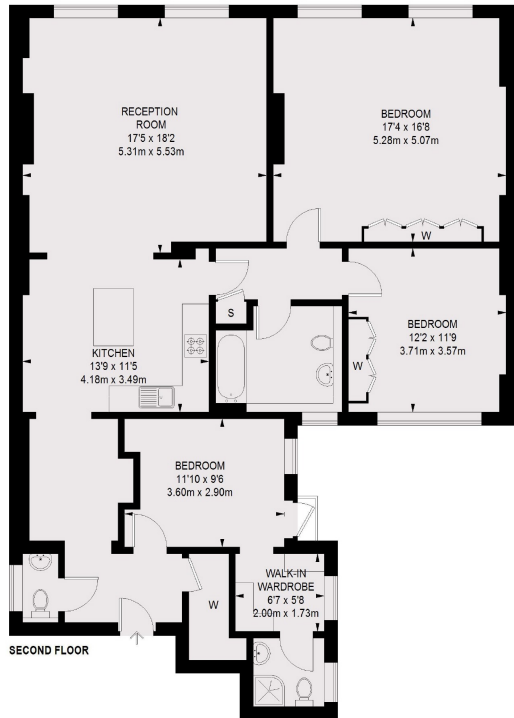


CURZON STREET

MAYFAIR W1J



THIS NEWLY REFURBISHED THREE BEDROOM APARTMENT ON THE SECOND FLOOR OF A GEORGIAN BUILDING ON CURZON STREET.



TOTAL APPROX. FLOOR AREA
1405 SQ. FT. (130.56 SQ. M.)

The large reception room has high ceilings, a feature fireplace and two large sash windows providing superb natural light. You enter the modern kitchen through an archway off the reception and there is plenty of space for a breakfast/dining area.

There are three good sized double bedrooms, with built-in storage to two of the rooms and a walk-in wardrobe and en suite shower room to the third. The family bathroom is off the hallway and there is a further guest cloakroom.

Curzon Street is close to Shepherds Market which

Hyde Park is close by and there are numerous transport links, including Green Park, Hyde Park and Piccadilly Circus.

FEATURES

- Second Floor Apartment
- Newly Refurbished
- Three Bedrooms
- Two Bathrooms
- Lift Access
- Heating & Hot Water Included in the Rent

Price: £2,050 Per week

We aim to make our particulars both accurate and reliable. However they are not guaranteed; nor do they form part of an offer or contract. If you require clarification on any points then please contact us, especially if you're traveling some distance to view. Please note that appliances and heating systems have not been tested and therefore no warranties can be given as to their working order. Energy Rating: C



WETHERELL
MAYFAIR'S FINEST PROPERTIES

102 Mount Street • London • W1K 2TH
T: 020 7529 5588 E: rentals@wetherell.co.uk

wetherell.co.uk

NO ONE KNOWS MAYFAIR BETTER THAN WETHERELL