



**WETHERELL**  
MAYFAIR'S FINEST PROPERTIES



## MARSHALL STREET, W1F

£3,950,000

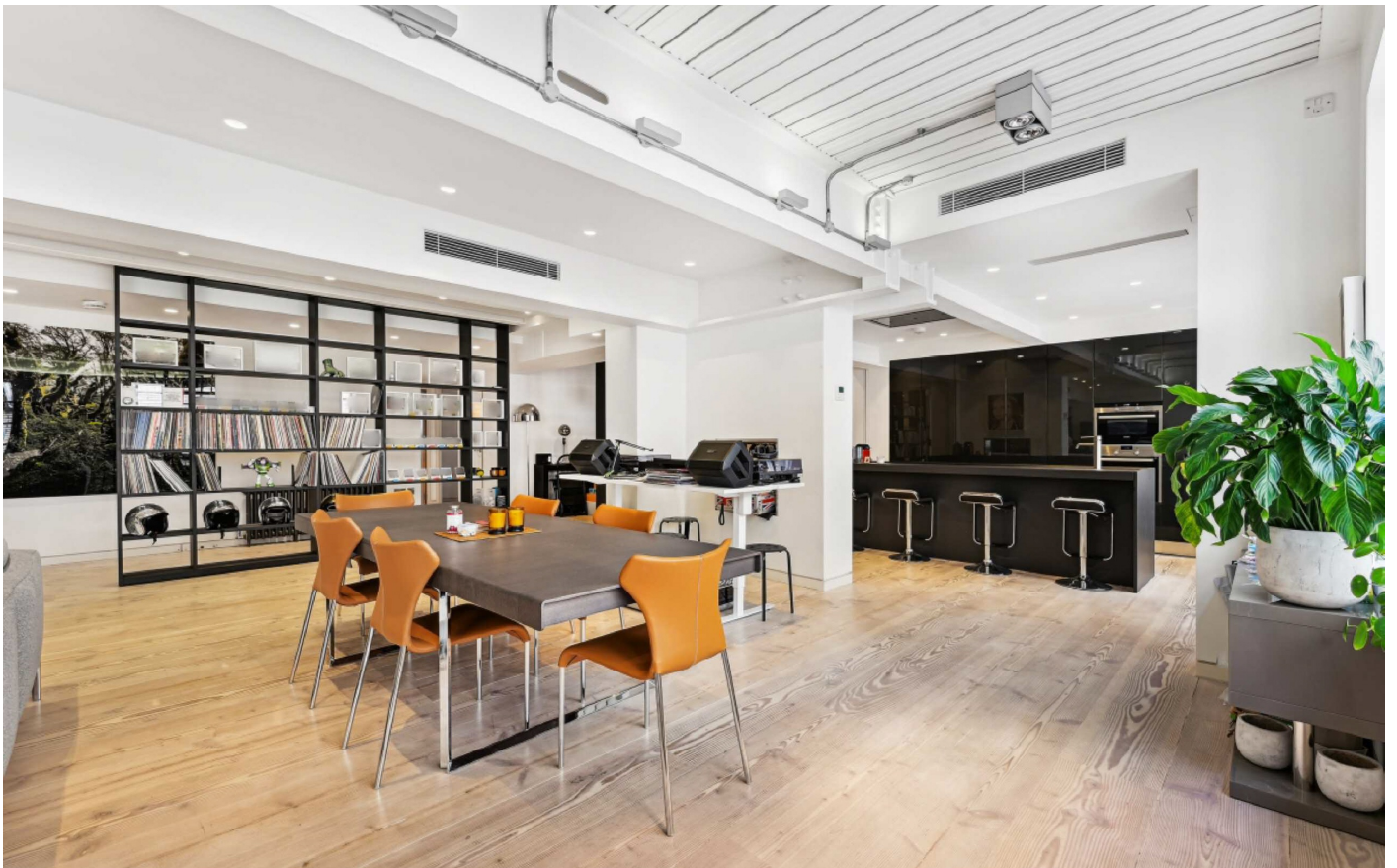
A Stunning 3 bed loft-style apartment in a gated development in Soho W1.

Set on the fourth floor of a prestigious, private, gated development in fashionable Soho, this home offers 2,296 sq. Ft of contemporary space. The loft-style apartment boasts a large, open-plan living space designed with sleek, neutral interiors, wooden flooring, beamed ceilings and large Crittall windows allowing an abundance of natural light to fill the space. The striking open-plan kitchen suite has been designed with high specification fittings including, contemporary, black gloss cupboards, integrated appliances, and a stylish island with breakfast bar.

The principal bedroom boasts a fully fitted walk-in wardrobe and large en suite bathroom. Bedroom 2 has built in wardrobes and en suite bathroom and there is a third bedroom which also has built in wardrobes. There is a utility room and a separate shower room. In addition, this apartment benefits from 24-hour concierge and lift access.

Marshall Street is opposite to the popular shopping facilities of Carnaby Street, Regent Street and Oxford Street.

MARSHALL STREET IS SURROUNDED BY A WEALTH OF ATTRACTIONS INCLUDING SOME OF LONDON'S FINEST RESTAURANTS, THEATRES, BARS AND CAFES.



## FEATURES

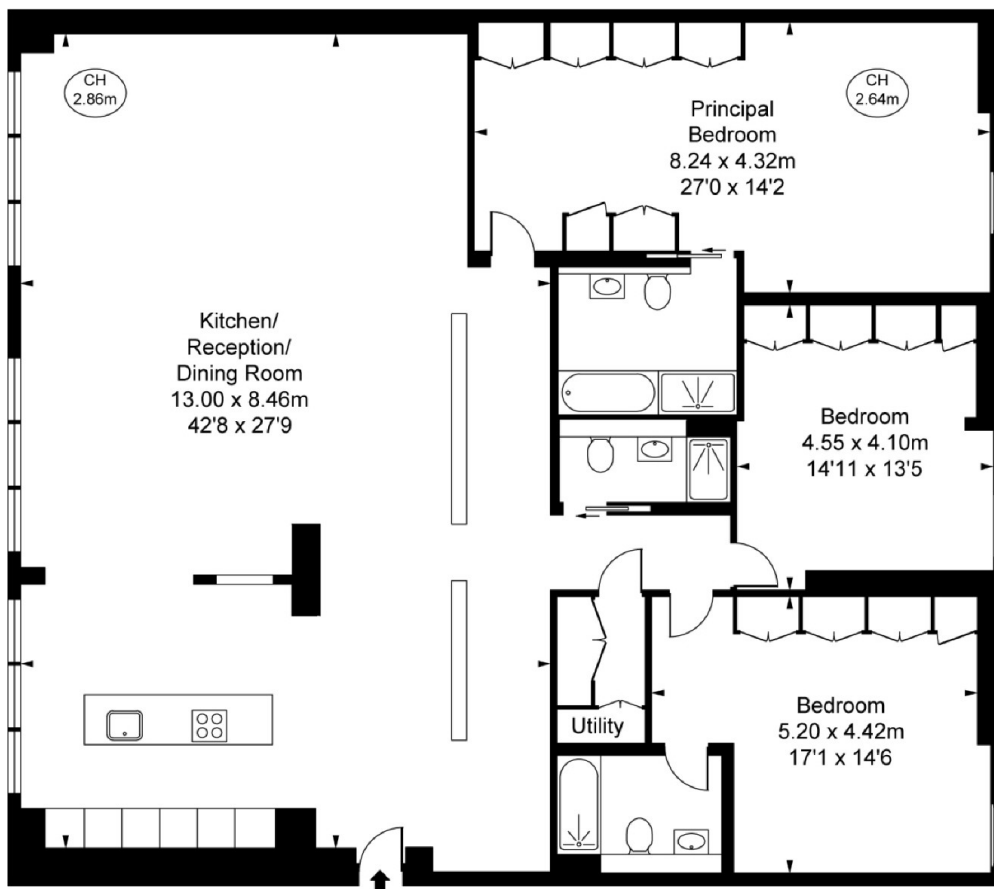
- Three Bedrooms • Three Bathrooms • 24-hour Concierge • Fourth Floor • Lift • 984-Year Lease •



# MARSHALL STREET, LONDON, W1F

The Regent Lofts,  
Marshall Street, W1F  
Approximate Gross Internal Area  
204.98 sq m / 2,206 sq ft

( CH = Ceiling Heights )



Fourth Floor

This plan is not to scale. It is for guidance and not for valuation purposes.  
All measurements and areas are approximate only, and have been prepared in accordance with the current edition of the RICS Code of Measuring Practice.  
© Fulham Performance



**WETHERELL**  
MAYFAIR'S FINEST PROPERTIES

102 Mount Street,  
London, W1K 2TH  
T: 020 7529 5566  
E: sales@wetherell.co.uk

We aim to make our particulars both accurate and reliable. However they are not guaranteed; nor do they form part of an offer or contract. If you require clarification on any points then please contact us, especially if you're traveling some distance to view. Please note that appliances and heating systems have not been tested and therefore no warranties can be given as to their working order.

wetherell.co.uk