

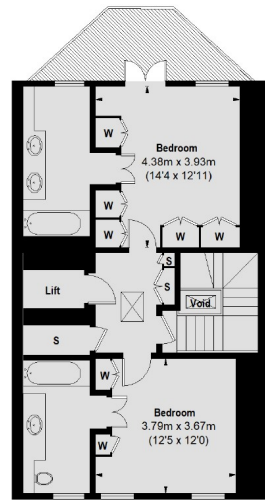


# DUNRAVEN STREET

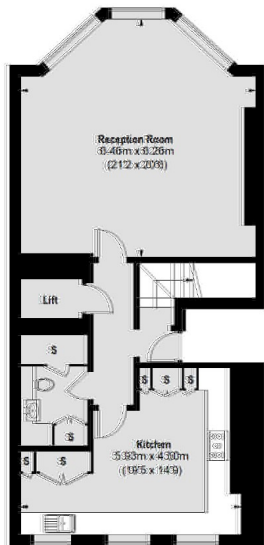
## MAYFAIR W1K



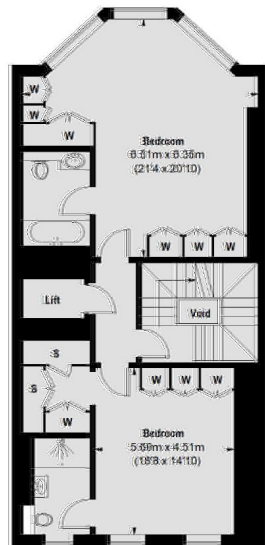
THIS FOUR BEDROOM PENTHOUSE APARTMENT IS ARRANGED OVER THREE FLOORS OF AN IMPOSING BUILDING LOCATED MOMENTS FROM HYDE PARK.



Fifth Floor



Third Floor



Fourth Floor

TOTAL APPROX. FLOOR AREA (EXCLUDING VOID) /  
(INCLUDING LIFT) 2,398 SQ. FT. (222.75 SQ. M)



Spanning 2,398 sq.ft this penthouse has four large bedrooms, all with built-in storage and luxury en suite bathrooms and one leading onto a private terrace overlooking Hyde Park.

There is a large fully integrated kitchen, separate utility room and a spacious reception room with excellent entertaining space.

The property benefits from direct lift access to all floors, air-conditioning, wooden flooring, high ceilings and an abundance of storage throughout.

Dunraven Street is perfectly located for some of London's finest restaurants, the green expanses of Hyde Park and excellent transport links, including Marble Arch and Bond Street tube stations.

#### FEATURES

- Four Double Bedrooms
- Direct Lift Access
- Air-Conditioning
- Lovely Balcony
- Views Across Hyde Park
- Wooden Flooring

Price: £3,000 Per week

We aim to make our particulars both accurate and reliable. However they are not guaranteed; nor do they form part of an offer or contract. If you require clarification on any points then please contact us, especially if you're traveling some distance to view. Please note that appliances and heating systems have not been tested and therefore no warranties can be given as to their working order. Energy Rating: B



**WETHERELL**  
MAYFAIR'S FINEST PROPERTIES

102 Mount Street • London • W1K 2TH  
T: 020 7529 5588 E: rentals@wetherell.co.uk

wetherell.co.uk