



**WETHERELL**  
MAYFAIR'S FINEST PROPERTIES



## GROSVENOR SQUARE, W1K

£5,500,000

A bright and well-presented three-bedroom apartment with views of Grosvenor Square and 24 hour porter.

O.I.E.O £5,500,000. This lateral apartment is situated on the third floor of a purpose-built residential building which benefits from two passenger lifts, 24- hour uniformed portorage, storage room and secure underground parking. The large reception room is 20 foot wide with three large sash windows allowing an abundance of natural light and providing views of Grosvenor Square. The principal bedroom is also three windows wide with built in storage and en suite bathroom with walk in shower and separate bath. The second and third bedrooms both have built in storage and are quietly located at the rear of the apartment. There is a family shower room, separate WC and separate kitchen with access to a private balcony.

Hyde Park is moments and is the largest Royal Park with 350 acres of urban park to explore. Marble Arch and Bond Street underground stations are the nearest underground stations.

GROSVENOR SQUARE PROVIDES ALMOST 2.5 HECTARES OF OPEN GARDEN JUST MOMENTS FROM ALL OF MAYFAIR'S FINEST AMENITIES WHICH INCLUDE DESIGNER RETAILERS, PRIVATE MEMBERS CLUBS, MICHELIN STAR RESTAURANTS AND THE CONNAUGHT HOTEL.

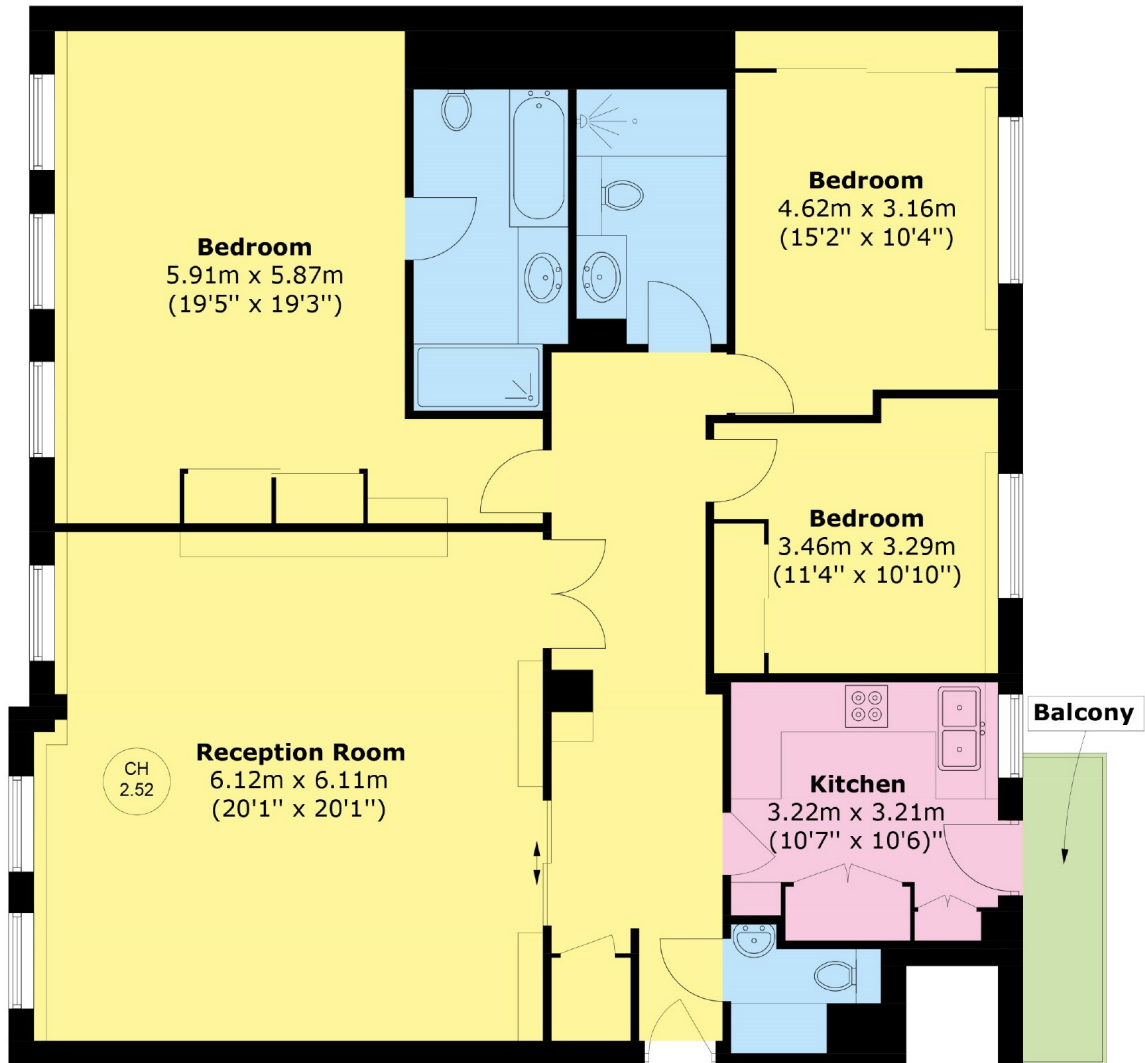


## FEATURES

- Grosvenor Square • Three Bedrooms • Two Bathrooms • 24-Hour Porter • Storage Room • Secure Parking •



# GROSVENOR SQUARE, LONDON, W1K



Area (approx.): 136.5 sq. m (1,469.2 sq. ft)  
Balcony area : 3.5 sq. m (37.6 sq. ft)