



BOURDON STREET

MAYFAIR W1K



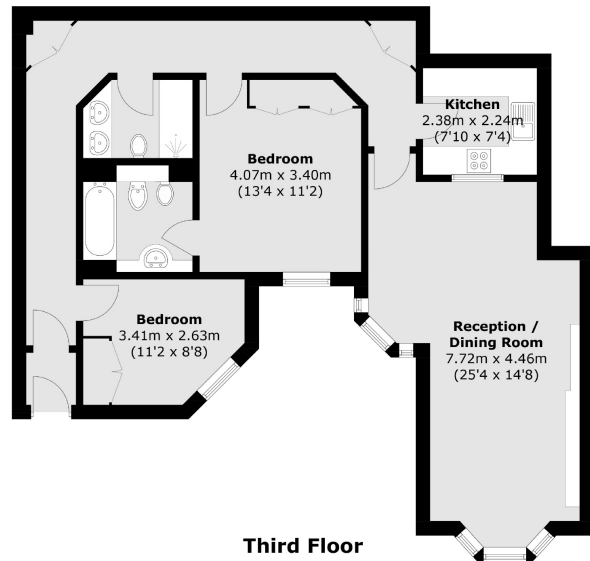
THIS SPACIOUS TWO DOUBLE BEDROOM, TWO BATHROOM APARTMENT IS LOCATED IN A SECURE DEVELOPMENT.



This spacious two double bedroom, two bathroom apartment is located in a secure development.

Located off Berkeley Square in the heart of Mayfair, Bloomfield Court is very close to Regent Street, Bond Street and Green Park.

The property offers a luxurious living space, with a dining area and workspace. It also has a modern kitchen and newly fitted carpets.



Total area (approx.): 85.9 sq. m (924.6 sq. ft)

FEATURES

- Two Double Bedrooms
- Two Bathrooms
- Wooden Flooring
- Lift Access
- Modern Kitchen
- Secure Development

Price: £1,395 Per week

We aim to make our particulars both accurate and reliable. However they are not guaranteed; nor do they form part of an offer or contract. If you require clarification on any points then please contact us, especially if you're traveling some distance to view. Please note that appliances and heating systems have not been tested and therefore no warranties can be given as to their working order. Energy Rating: B



WETHERELL
MAYFAIR'S FINEST PROPERTIES

102 Mount Street • London • W1K 2TH
T: 020 7529 5588 E: rentals@wetherell.co.uk

wetherell.co.uk

NO ONE KNOWS MAYFAIR BETTER THAN WETHERELL