

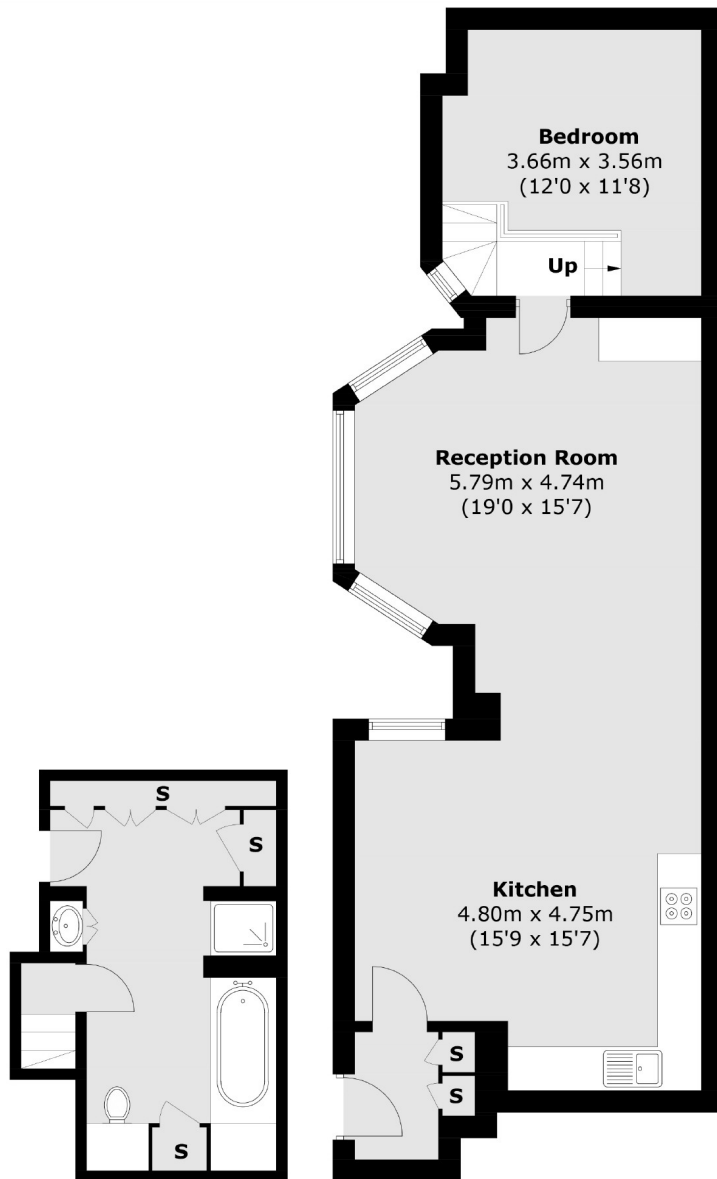


# ALBEMARLE STREET

## MAYFAIR W1S



A BEAUTIFULLY PRESENTED, ONE BEDROOM SPLIT-LEVEL APARTMENT IN A WELL MAINTAINED BUILDING.



**Third Floor**

Total area (approx.): 76.8 sq. m (827.0 sq. ft)



Complete with an open plan kitchen/dining/reception room, spacious bedroom and bathroom with a dressing room area. There is a Bose sound system, Lutron lighting and hard wood floors throughout.

Albemarle Street is ideal for Green Park tube station on the Piccadilly, Victoria and Jubilee lines. Piccadilly Circus and the amenities and attractions of the West End are close by.

**FEATURES**

- One Bedroom
- Wooden Flooring
- Modern Fixtures & Fittings
- Built-In Storage
- Excellent Location
- Furnished

Price: £725 Per week

We aim to make our particulars both accurate and reliable. However they are not guaranteed; nor do they form part of an offer or contract. If you require clarification on any points then please contact us, especially if you're traveling some distance to view. Please note that appliances and heating systems have not been tested and therefore no warranties can be given as to their working order. Energy Rating: D



**WETHERELL**  
MAYFAIR'S FINEST PROPERTIES

102 Mount Street • London • W1K 2TH  
T: 020 7529 5588 E: rentals@wetherell.co.uk

wetherell.co.uk