

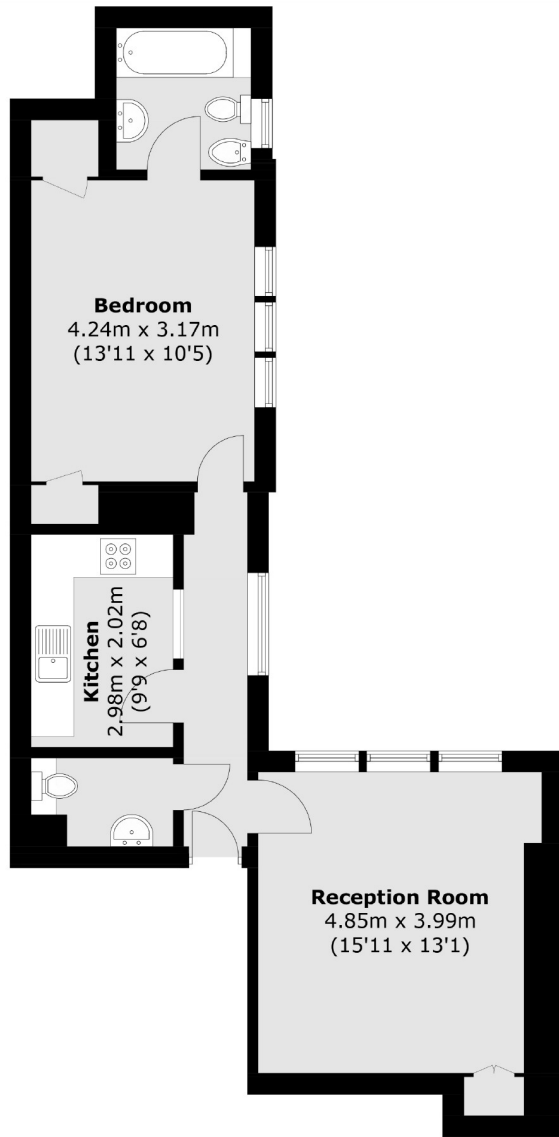


HERTFORD STREET

MAYFAIR W1J



A ONE BEDROOM APARTMENT INCLUSIVE OF ALL BILLS INCLUDING SKY TV & WIFI SERVICES, LOCATED WITHIN A WELL MAINTAINED PORTERED BUILDING IN THE HEART OF MAYFAIR.



Ground Floor

Total area (approx.): 51.9 sq. m (558.5 sq. ft)

We aim to make our particulars both accurate and reliable. However they are not guaranteed; nor do they form part of an offer or contract. If you require clarification on any points then please contact us, especially if you're traveling some distance to view. Please note that appliances and heating systems have not been tested and therefore no warranties can be given as to their working order. Energy Rating: D



Located in the heart of Mayfair this property is situated close to the green spaces of Hyde Park, Green Park and the world famous eating and shopping facilities of Mayfair.

FEATURES

- Spacious Double Bedroom
- Separate Kitchen
- Furnished
- Excellent Location
- High Ceilings
- All Bills Included

Price: £760 Per week



WETHERELL

MAYFAIR'S FINEST PROPERTIES

102 Mount Street • London • W1K 2TH
T: 020 7529 5588 E: rentals@wetherell.co.uk

wetherell.co.uk

NO ONE KNOWS MAYFAIR BETTER THAN WETHERELL