



**WETHERELL**  
MAYFAIR'S FINEST PROPERTIES



## SOUTH AUDLEY STREET, W1K

£13,500 PER WEEK

Situated in an architecturally designed residential building with a concierge, spa, gym, swimming pool and private underground parking, this duplex apartment is found on the ground and lower ground floors.

The reception room is at the front of the apartment, a large, striking room with lots of natural light, a dining area, and a bar.

The kitchen is adjacent to the dining room and can be accessed via the hall or dining area. Contemporary in style, it offers generous countertop space and integrated appliances.

The five bedrooms are all located on the lower ground floor. The principal suite is the largest, with bespoke wardrobes and marble tiled luxury en suite bathroom. The other four bedrooms are all en suite also with fitted wardrobes.

South Audley Street is on a prominent corner site of Mayfair's conservation area.

THE PROPERTY IS POSITIONED WITHIN A SHORT DISTANCE OF SOME OF LONDON'S BEST SHOPS, RESTAURANTS, HOTELS AND THE OPEN GREEN SPACES OF THE ROYAL PARKS, GROSVENOR SQUARE AND MOUNT STREET GARDENS.

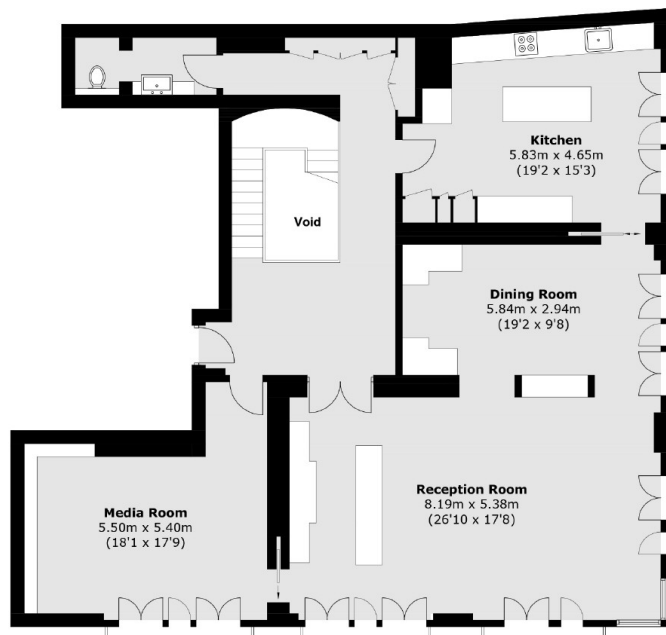


## FEATURES

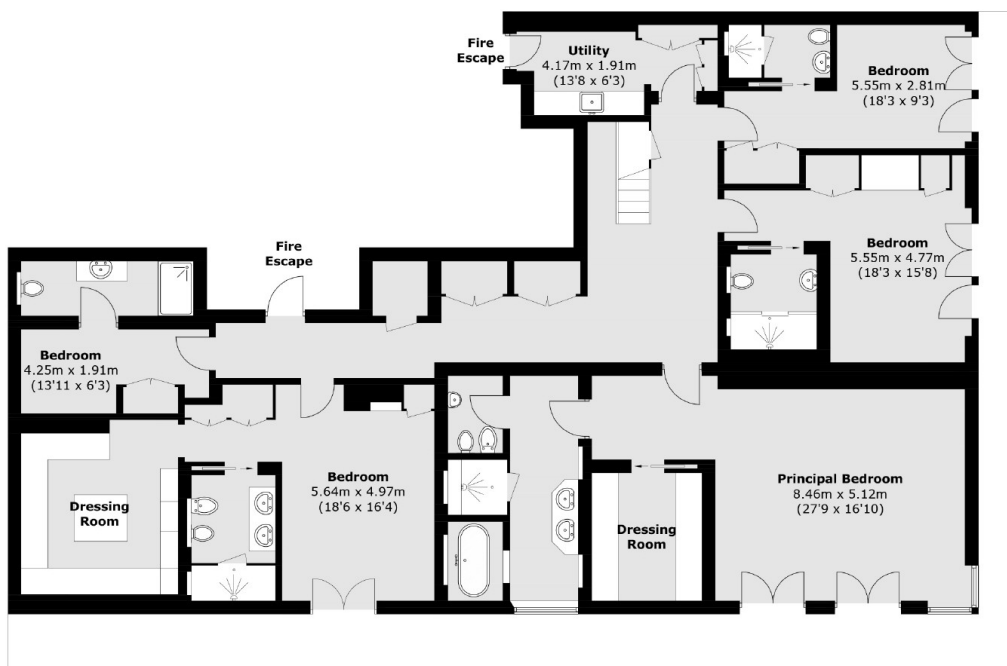
- Five Bedrooms • Five Bathrooms • Concierge • Gym • Leisure Facilities • New Development •



# SOUTH AUDLEY STREET, LONDON, W1K



## Ground Floor



## Lower Ground Floor

Total area (approx.): 361.8 sq. m (3,894.4 sq. ft)

External area (approx.): 44.6 sq. m (480.1 sq. ft)



**WETHERELL**  
MAYFAIR'S FINEST PROPERTIES

102 Mount Street,  
London, W1K 2TH  
T: 020 7529 5566  
E: sales@wetherell.co.uk

We aim to make our particulars both accurate and reliable. However they are not guaranteed; nor do they form part of an offer or contract. If you require clarification on any points then please contact us, especially if you're traveling some distance to view. Please note that appliances and heating systems have not been tested and therefore no warranties can be given as to their working order.

wetherell.co.uk