



THE BRYANSTON
HYDE PARK W1

APARTMENT 11.01

Three Bedroom





BEYOND COMPARE

Designed by world-renowned architect, Rafael Viñoly, The Bryanston, Hyde Park is a collection of just 54 residences at one of London's finest addresses, affording a spectacular central location and extraordinary views.

Apartment 11.01, a three-bedroom apartment situated on Floor 11, features spacious rooms, generous ceiling heights of three metres and dramatic, oversized curved windows, taking in panoramic views across Hyde Park, the splendid London cityscape and northwards towards Hampstead Heath.

Spanning across two floors, The Bryanston houses exceptional amenities catering for every aspect of luxury living, from wellness and fitness, to business and leisure.



The best of London is a short walk away, including shopping on Oxford Street, exclusive hotels, restaurants and world-famous retailers in Mayfair and the relaxed villagey feel of Marylebone with regular farmers markets and small independent shops.



INTERIOR DESIGN

Apartment 11.01 has been curated by London-based interior designer, Albion Nord. The concept celebrates the changing light of the day that flows throughout the apartment. This, combined with the grand sense of space and magnificent views was the starting point of the design. From here, Albion Nord has created a sanctuary of peace and calm with a warm, soft palette that works in harmony with the abundant natural light that bathes the apartment.

Echoing the building's own curved form and its harmonious relationship with adjacent Hyde Park, organic shapes and natural materials crafted by British artisans and makers are delivered through the range of bespoke furniture pieces. The contemporary design fused with traditional techniques ensures it stands the test of time and continue to elevate the luxury experience.





BRINGING THE OUTSIDE IN

Elegant, curved windows envelop Apartment 11.01, inviting in soft, natural light during the day, and the twinkling lights of London at night. Above the rooftops and the treetops, there's a feeling of lightness and tranquillity. Whether you're winding down or entertaining, this is the perfect setting, as the days and seasons unfold gently before your eyes.











THOUGHT IN EVERY DETAIL

The finest materials and finishes, along with discerning details and accents, evoke a sense of seamless luxury throughout. The interior architecture of The Bryanston, designed by British designer Millier, is inspired by the classic townhouses of Mayfair and Marylebone — timeless, refined and complemented by carefully sourced contemporary fixtures and fittings.







11.01

THREE BEDROOM

TOTAL AREA

215 sq m
(2,317sq ft)

KEY ROOM DIMENSIONS

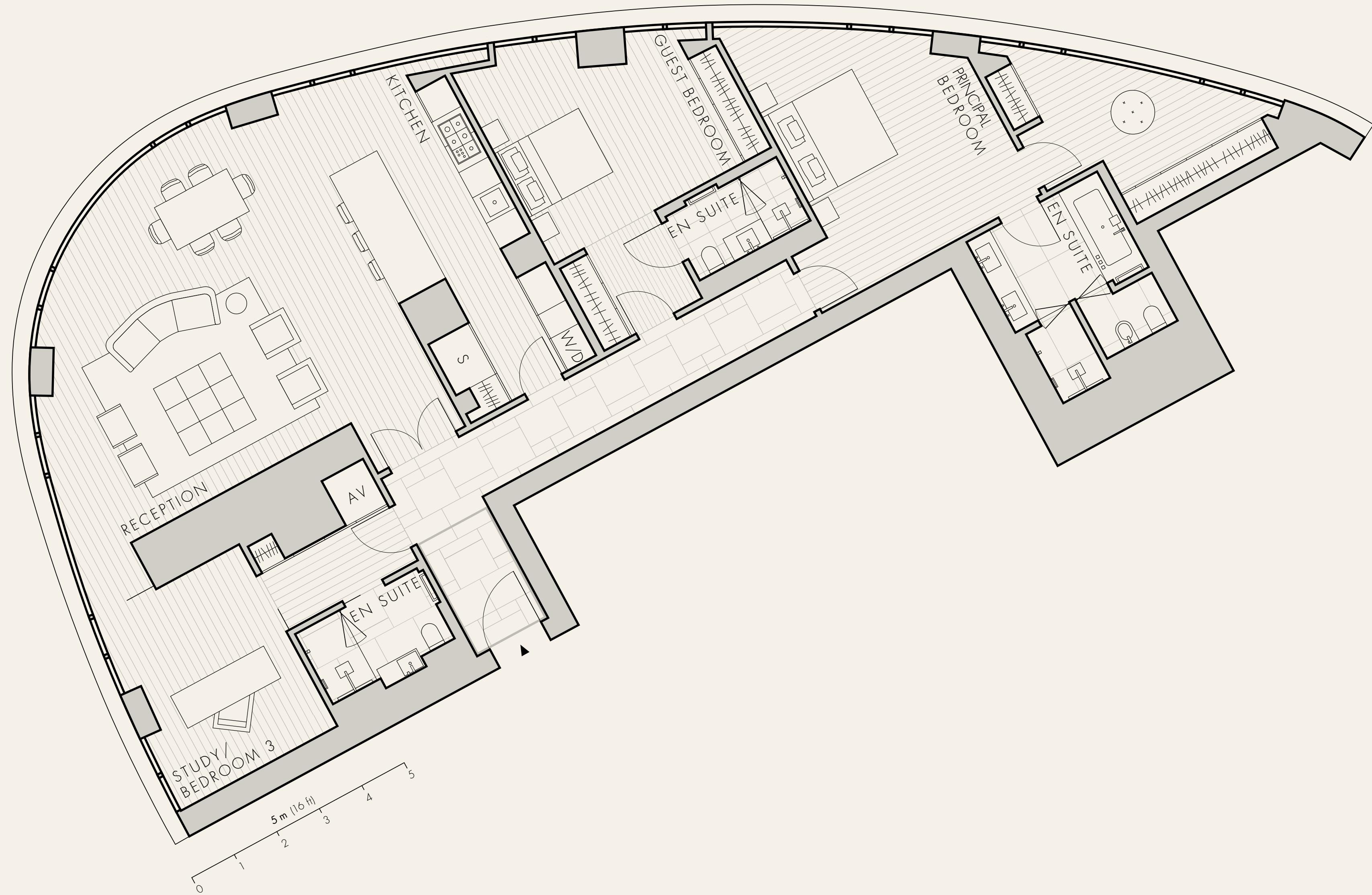
RECEPTION/KITCHEN
7 x 10 m (23 x 33 ft)

PRINCIPAL BEDROOM
5 x 4 m (16 x 14 ft)

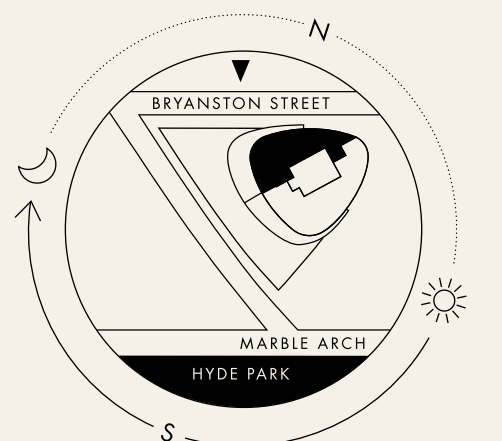
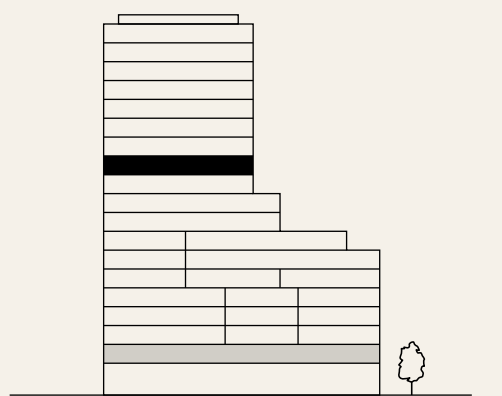
GUEST BEDROOM
4 x 4 m (13 x 15 ft)

STUDY/BEDROOM 3
4 x 4 m (14 x 12 ft)

AV = audio visual
S = services
W/D = washer/dryer



FLOOR 11





25m Indoor Swimming Pool



Children's Play Space

From a beautifully appointed spa and 25m swimming pool, to a private cinema and a children's play space, residents can work, play and relax in immaculately designed surroundings.



Private Cinema



The Bryanston business suite comprises two generous interconnecting meeting rooms and a welcoming reception area. An adjoining service kitchen is fully equipped to cater for refreshment breaks, light snacks, business lunches or private dining events. Furnished with state-of-the-art AV facilities and secure wi-fi, the business suite offers a relaxed, elegant and considered environment in which to conduct business. Residents can book the business suite via the concierge.

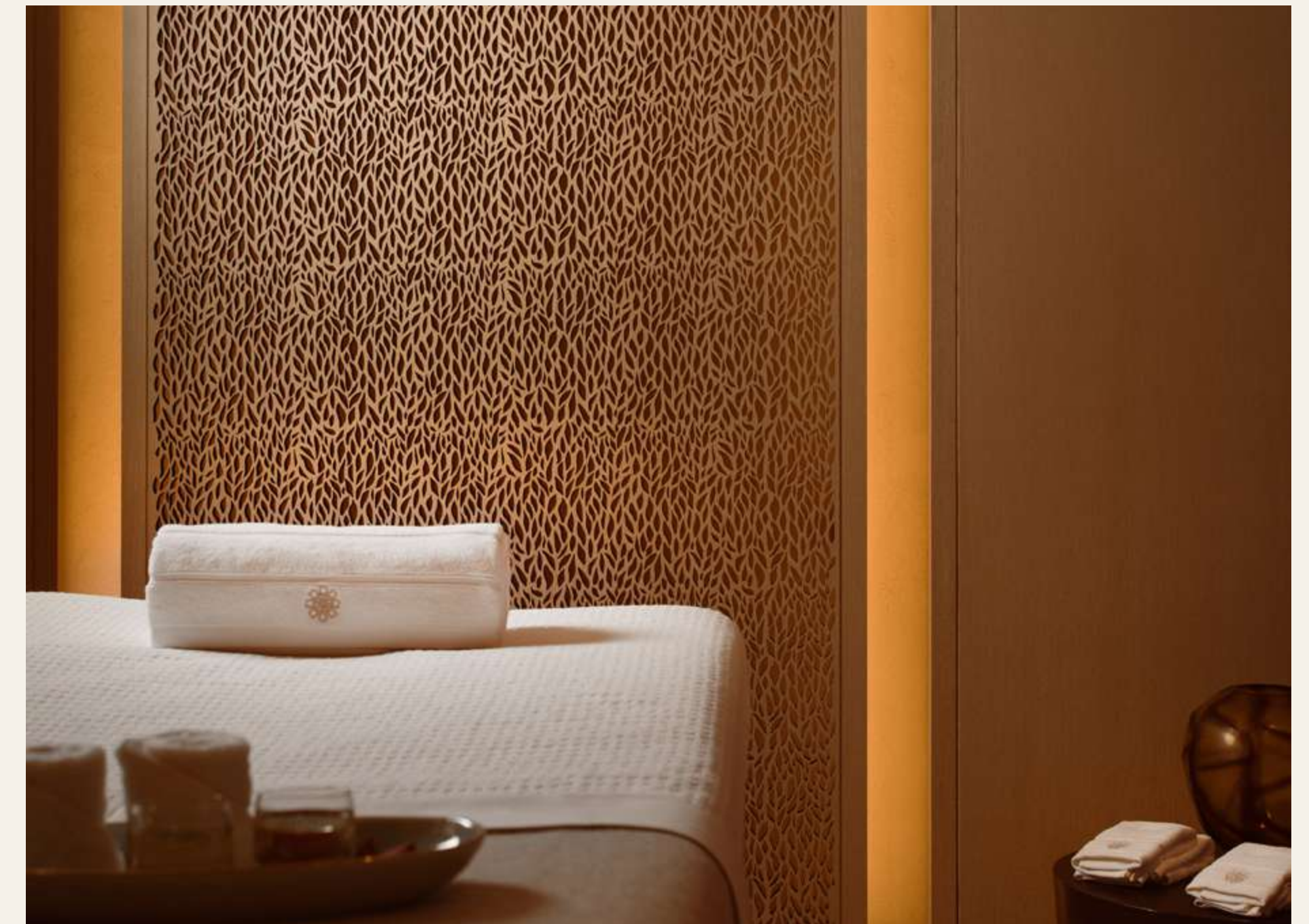


Business suite: consisting of two interconnecting rooms for meetings or private dining



Residents' Gym

The residents' gym and private training rooms are serviced by international personal trainers MER. Residents can arrange private exercise, classes or one-to-one training as well as treatments from world-class partners Ruuby Black Label and Dr Barbara Sturm in the Spa.



Treatment Room



Entrance Hall

Apartment 11.01 at The Bryanston, features Crestron home integration system, Bulthaup kitchen, Wolf cooking and Subzero refrigeration equipment, Ziptap, large-format stone in the bathrooms and kitchen, oak floors, and Dornbracht sanitaryware.

PARKING

The right to park one car in a secure underground parking space, with 24-hour valet parking. The right to park additional cars is subject to negotiation

LOCATION

The Bryanston,
55 Bryanston Street,
London, W1H 7BZ

RESIDENTS' AMENITIES

24-hour concierge and valet services provided by super-prime residential managing agent Rhodium

LOCAL AUTHORITY

Westminster City Council

24-hour monitored security surveillance

TENURE

125 years from and including 1 January 2020 with a statutory right for qualifying owners to extend for a further 90 years

25m indoor swimming pool

Sauna, steam room, hydrotherapy pool, experience shower and relaxation areas

Private treatment room

SERVICE CHARGE

Estimated £20.68 per square foot, per annum

Fully equipped training rooms and gym

Business suite: consisting of two interconnecting rooms for meetings or private dining

Private cinema

Children's play space



Wolf cooking appliances



Dornbracht chrome brassware



Interlocking Tundra Grey marble flooring



THE BRYANSTON
HYDE PARK W1

Lottie Geaves
lottie.geaves@almacantar.com
+44 (0)20 7535 2826