

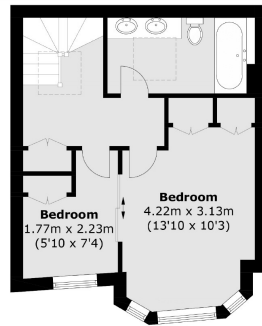


NEW BURLINGTON PLACE

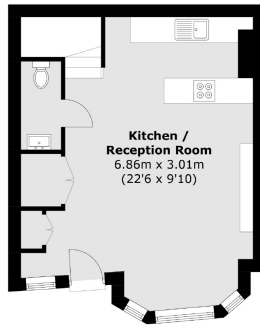
MAYFAIR W1S



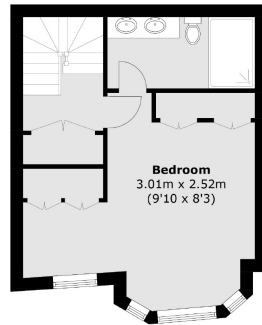
A NEWLY DEVELOPED, INTERIOR DESIGNED HOUSE SET OVER THREE FLOORS SITUATED BETWEEN BOND STREET AND REGENT STREET.



Second Floor



Ground Floor



First Floor

Total area (approx.): 104.4 sq. m (1,123.8 sq. ft)

The property comprises two double bedrooms with bespoke built-in storage, top floor bedroom includes additional study space/sleeping space and two award-winning, luxury bathrooms with Italian book-matched marble finishes.

The ground floor comprises an open plan reception room with fully fitted kitchen and guest WC.

The house has been architectural designed to maximise space, light and storage at all levels.

New Burlington Place is at the end of Saville Row and so it is conveniently located for the many shopping and transport amenities of Regent Street and New Bond Street.

FEATURES

- Two Double Bedrooms
- Study/Third Bedroom
- Two Luxury Bathrooms
- High Quality Furnishings
- Air-Conditioning
- Excellent Location

Price: £1,850 Per week

We aim to make our particulars both accurate and reliable. However they are not guaranteed; nor do they form part of an offer or contract. If you require clarification on any points then please contact us, especially if you're traveling some distance to view. Please note that appliances and heating systems have not been tested and therefore no warranties can be given as to their working order. Energy Rating: C



WETHERELL
MAYFAIR'S FINEST PROPERTIES

102 Mount Street • London • W1K 2TH
T: 020 7529 5588 E: rentals@wetherell.co.uk

wetherell.co.uk