



WETHERELL
MAYFAIR'S FINEST PROPERTIES



CHESTERFIELD GARDENS, W1J

£1,950,000

A two bedroom lateral apartment located in a purpose built block with 24 hr concierge and share of freehold

Situated on the first floor, this well presented apartment has a double reception room with plenty of natural light coming from the large windows at each end. There is a separate, modern kitchen with breakfast island and integrated appliances. The principal bedroom has built in wardrobes and en suite shower room. The second bedroom benefits from built in wardrobes and there's a separate shower room. There is a lift, 24 hour concierge and the apartment comes with a share of the freehold.

The apartment is perfectly located to enjoy the boutique shops, Michelin star restaurants and private members clubs of Mayfair.

CHESTERFIELD HOUSE IS LOCATED AT THE SOUTHERN END OF SOUTH AUDLEY STREET
AND THE FLAT IS ENTERED VIA CHESTERFIELD GARDENS.



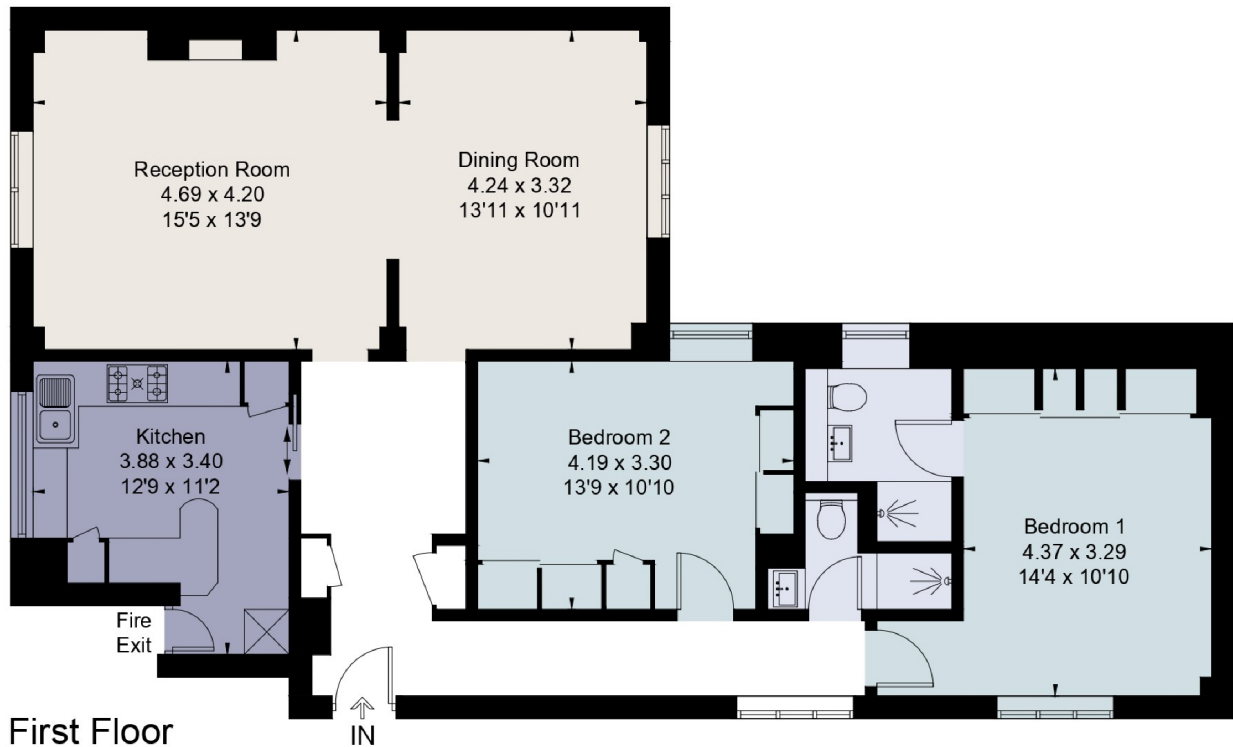
FEATURES

- Prime Mayfair Location • Two Bedrooms • Two Bathrooms • Double Reception Room • 24 Hour Porter • Share of Freehold •



CHESTERFIELD GARDENS, LONDON, W1J

Approximate Area = 103.1 sq m / 1110 sq ft
Including Limited Use Area (1.9 sq m / 20 sq ft)
For identification only. Not to scale.
© Fourwalls



Surveyed and drawn in accordance with the International Property Measurement Standards (IPMS 2: Residential)
fourwalls-group.com 57150



WETHERELL
MAYFAIR'S FINEST PROPERTIES

102 Mount Street,
London, W1K 2TH
T: 020 7529 5566
E: sales@wetherell.co.uk

We aim to make our particulars both accurate and reliable. However they are not guaranteed; nor do they form part of an offer or contract. If you require clarification on any points then please contact us, especially if you're traveling some distance to view. Please note that appliances and heating systems have not been tested and therefore no warranties can be given as to their working order.

wetherell.co.uk