



WETHERELL
MAYFAIR'S FINEST PROPERTIES



DERING STREET, W1S

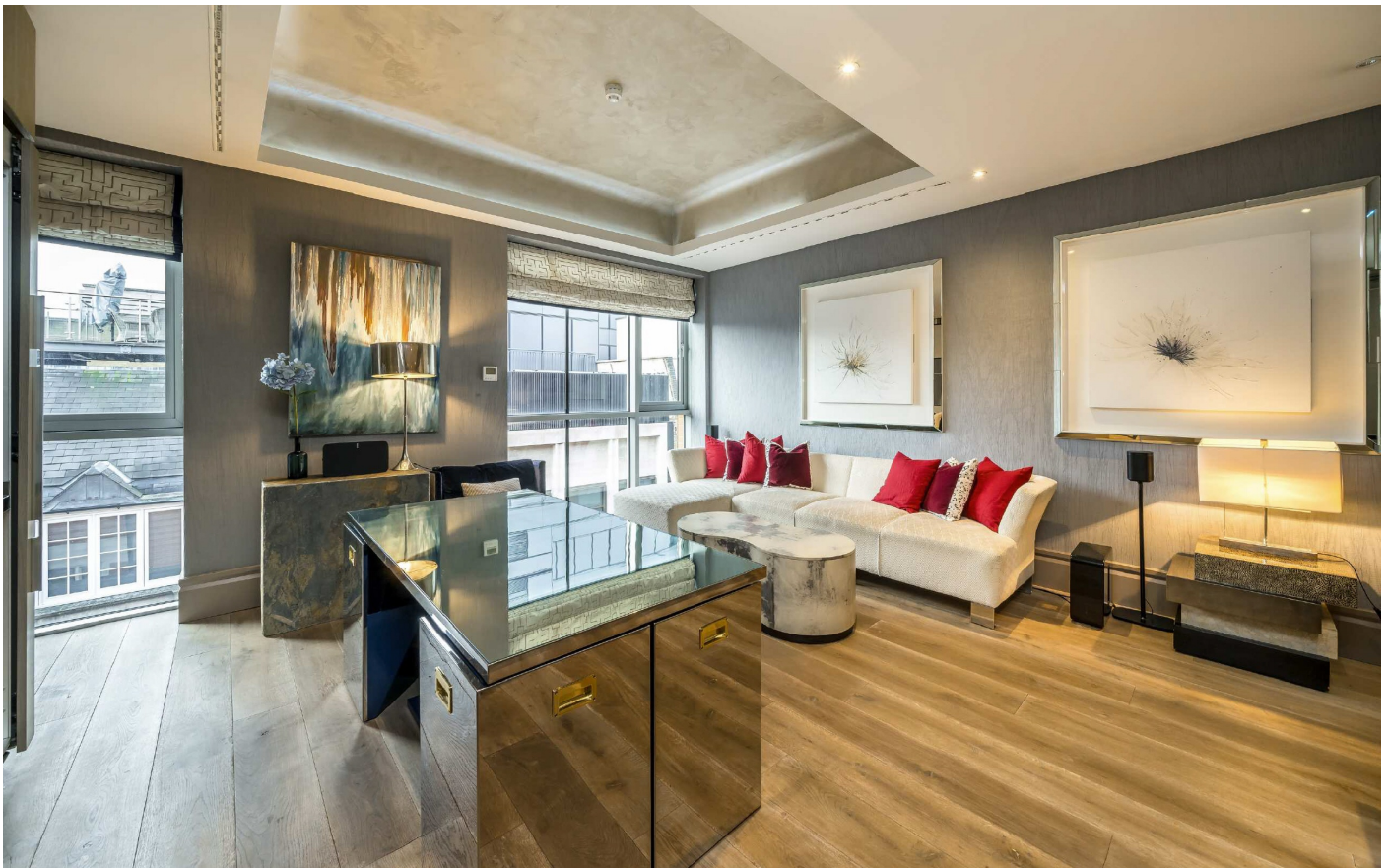
£1,400,000

A large (776sqft) studio apartment, within a modern portered building, with a lift and air conditioning, located less than a minutes walk from Bond Street Station.

A very well-proportioned apartment located on the third floor of this incredibly well-located building in Mayfair. The apartment is the same size as most generous one-bedroom apartments and benefits from a clearly segregated bedroom area to the living space and plenty of built in storage. The bathroom has a separate shower cubicle and bath and a double sink. This modern building further benefits from a concierge on the front desk and modern amenities including a lift and air conditioning.

Located in the heart of London, only moments away from Oxford Street and Regents Street and with some of the best transport links in London (0.2 miles) to Oxford Circus the apartment makes the perfect buy to let, pied a terre or anyone looking for a property located in the very heart of Mayfair/ London.

VERGE APARTMENTS IS EXTREMELY WELL LOCATED FOR BOND STREET STATION ON THE NEW ELIZABETH LINE WITH DIRECT TRAINS TO HEATHROW (C. 30 MINS).

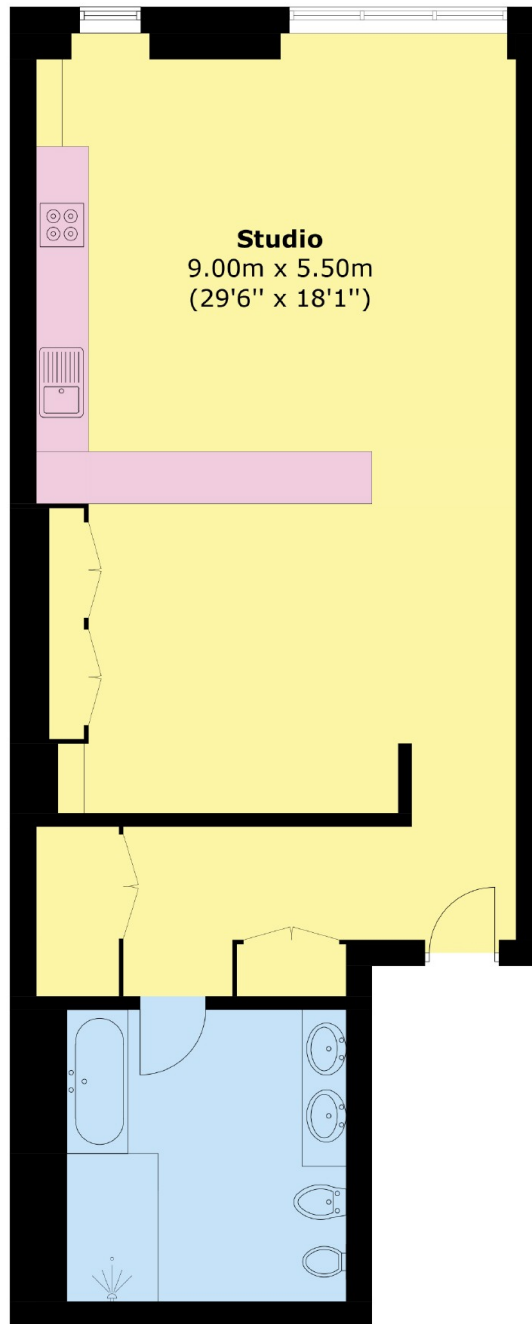


FEATURES

- Large Studio c. 776 SqFt • Bond Street Station- 270 ft • Oxford Circus Station- 0.2 miles • Heathrow (c. 30 mins) • Porter • Lift • Air Conditioning •



DERING STREET, LONDON, W1S



Area (approx.): 72.1 sq. m (776.0 sq. ft)