



WETHERELL
MAYFAIR'S FINEST PROPERTIES



GREEN STREET, W1K

£6,300,000

A three bedroom, three bathroom lateral apartment with direct, south facing, views overlooking Green Street's Secret Garden's.

Located on the third floor, with a lift, the apartment measures c. 2,215sqft and features a spacious reception room, large entrance hall and a separate kitchen. All bedrooms have ensuite bathrooms with built in wardrobes and a walk through dressing room in the principle bedroom. This well regarded red brick period building is located on Green Street (0.2 miles to Marble Arch tube station) and benefits from access into the private and highly exclusive communal gardens.

GREEN STREET IS SITUATED BETWEEN NORTH AUDLEY STREET AND PARK LANE. IT IS WELL PLACED FOR ACCESS TO THE INTERNATIONALLY RENOWNED SHOPS, RESTAURANTS AND OTHER AMENITIES OF MAYFAIR AND THE WEST END.

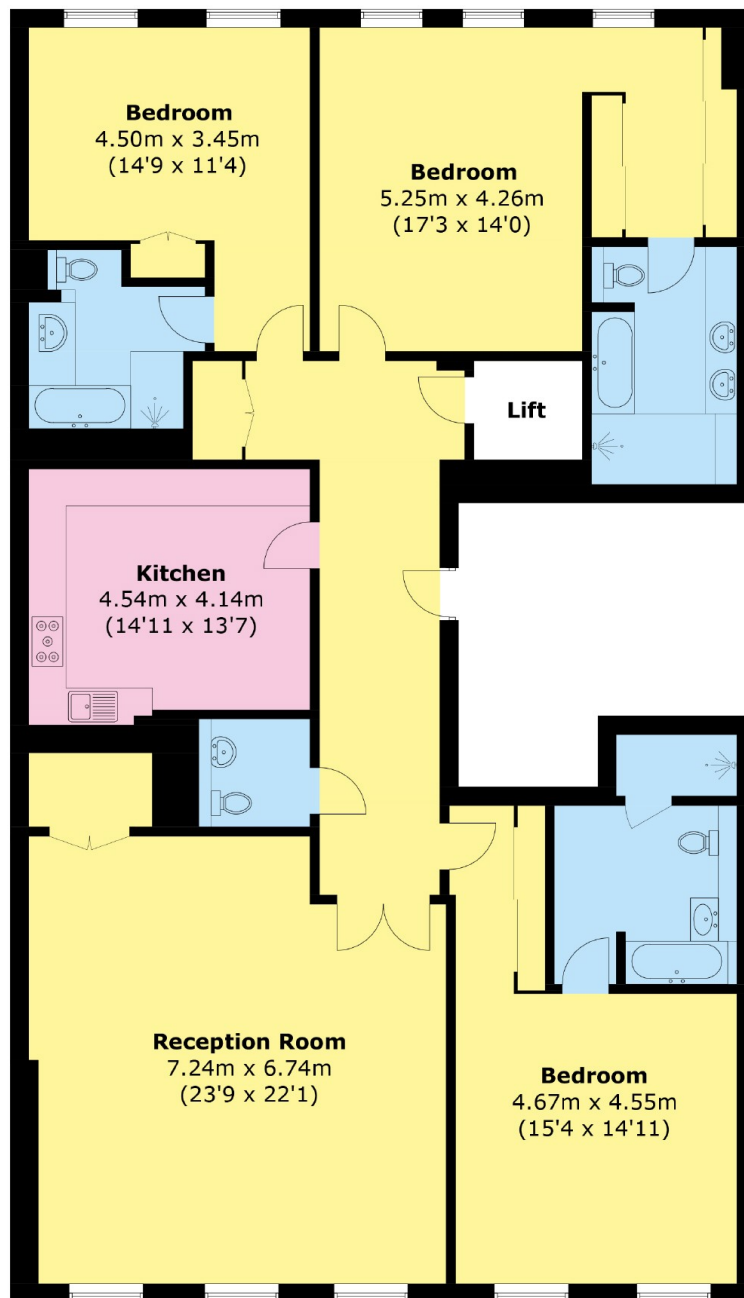


FEATURES

- Three Bedrooms • Three Bathrooms • Views over Private Gardens • Access to Private Gardens • Lift • Porter •



GREEN STREET, LONDON, W1K



Total area (approx.): 205.8 sq. m (2,215.2 sq. ft)



WETHERELL
MAYFAIR'S FINEST PROPERTIES

102 Mount Street,
London, W1K 2TH
T: 020 7529 5566
E: sales@wetherell.co.uk

We aim to make our particulars both accurate and reliable. However they are not guaranteed; nor do they form part of an offer or contract. If you require clarification on any points then please contact us, especially if you're traveling some distance to view. Please note that appliances and heating systems have not been tested and therefore no warranties can be given as to their working order.

wetherell.co.uk