

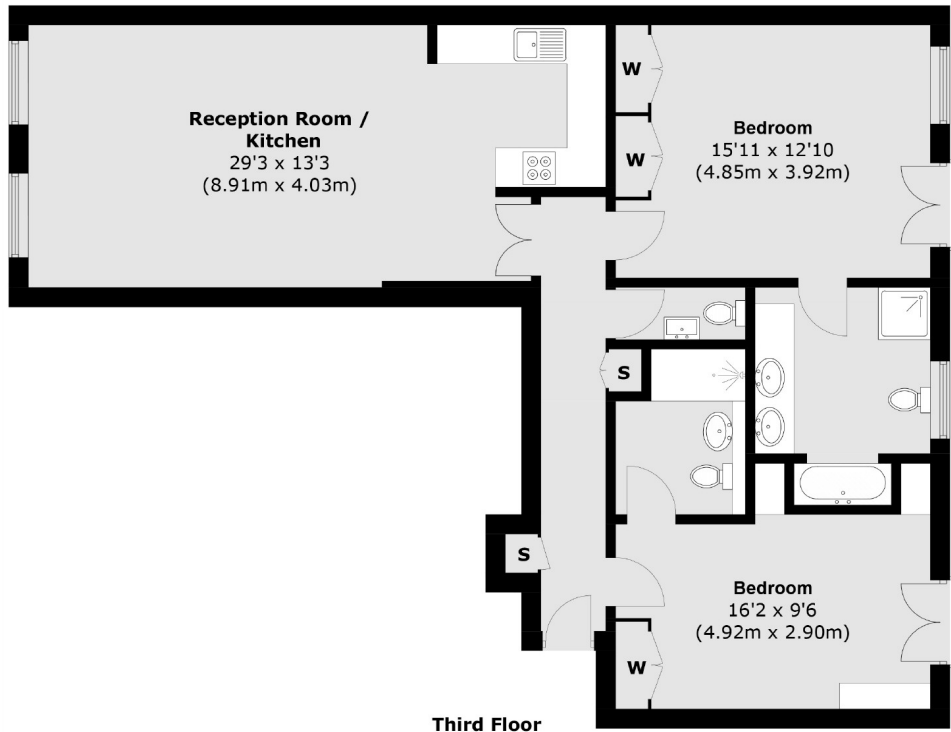


DOVER STREET

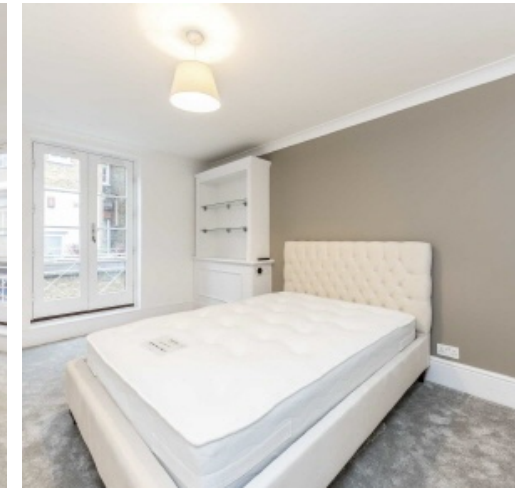
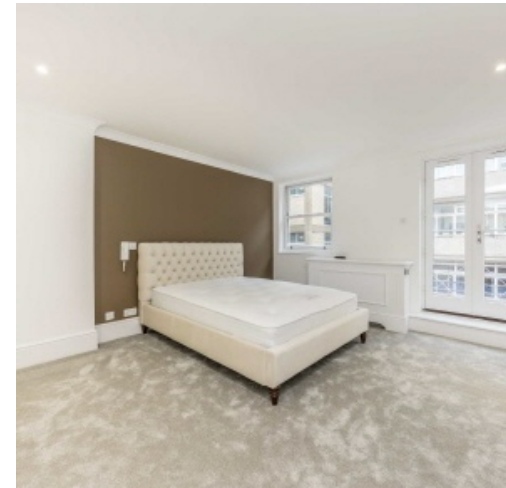
MAYFAIR W1S



SITUATED ON THE THIRD FLOOR OF A PERIOD BUILDING AND IDEALLY LOCATED CLOSE TO PICCADILLY AND GREEN PARK, A RECENTLY RENOVATED TWO BEDROOM APARTMENT.



Total area (approx.): 94.7 sq. m (1,019.3 sq. ft)



Dover Street is located close to local shops and restaurants, the many theatres of the West End and the green open spaces of Green Park.

FEATURES

- Two Double Bedrooms
- Two Bathrooms
- Wooden Flooring
- Recently Renovated
- Third Floor (Lift Access)
- Secure Entry Systems

Price: £1,395 Per week

We aim to make our particulars both accurate and reliable. However they are not guaranteed; nor do they form part of an offer or contract. If you require clarification on any points then please contact us, especially if you're traveling some distance to view. Please note that appliances and heating systems have not been tested and therefore no warranties can be given as to their working order. Energy Rating: C



WETHERELL
MAYFAIR'S FINEST PROPERTIES

102 Mount Street • London • W1K 2TH
T: 020 7529 5588 E: rentals@wetherell.co.uk

wetherell.co.uk

NO ONE KNOWS MAYFAIR BETTER THAN WETHERELL